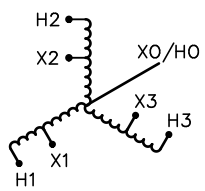




GUELPH, ONT. BARABOO, WI COMPTON, CA MONTERREY, MX

THREE PHASE DRY TYPE AUTOTRANSFORMER  
AUTOTRANSFORMATEUR SEC TRIPHASE

HV/HT	600Y/346V (60HZ) 8.7A		8.7A		Cust. Ref.		
	480Y/277V (50/60HZ)		8.7A		Réf. du client		
BIL	-					Serial No.	
TERM. BORNES	H0 H1 H2 H3				Part No.	Y009PKCB3LOU	
	VOLTS	CURRENT COURANT	% RATED VOLTAGE % TENSION NOMINALE	CONNECTION EACH PHASE CONNEXION PAR PHASE	kVA	9.0	
					TYPE	QT	
					Cooling Refroidissement	ANC	
					Temp. Rise Echauffement	80 °C	
					Temp. Class Classe de Temp.	130 °C	
					Frequency Fréquence	60 Hz	
					Impédance %		
					Encl. Type Type de boîtier	3R	
					Wt Poids lbs/kg	49/23	
					Winding Enroulement	COPPER	
LV/BT	480Y/277V (60HZ)		10.8A				
	380Y/219V (50/60HZ)		10.8A				
BIL	-						
TERM. BORNES	X0 X1 X2 X3						



RATED KVA AT 50/60HZ: 7.2KVA  
VOLTAGES SHOWN ARE FOR 3 PHASE, 4 WIRE SYSTEMS. NEUTRAL AND GROUND CONNECTIONS SHOULD BE MADE IN ACCORDANCE WITH LOCAL ELECTRICAL CODE AND STANDARDS REQUIREMENTS

D003303b1



THIS DRAWING CONTAINS STRICTLY CONFIDENTIAL INFORMATION BELONGING TO HAMMOND POWER SOLUTIONS AND MUST NOT BE DISTRIBUTED OUTSIDE AUTHORIZED PARTIES.



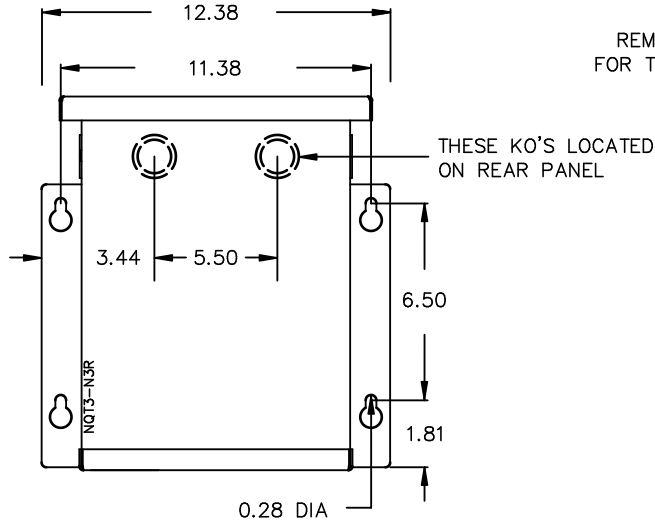
TITLE: 3 PH ENCAPSULATED AUTO TRANSFORMER  
NAMEPLATE INFORMATION

NO.	DATE	BY	REVISION	DES: MCHRISTM
				DATE: 10/08/25
				SCALE: NTS

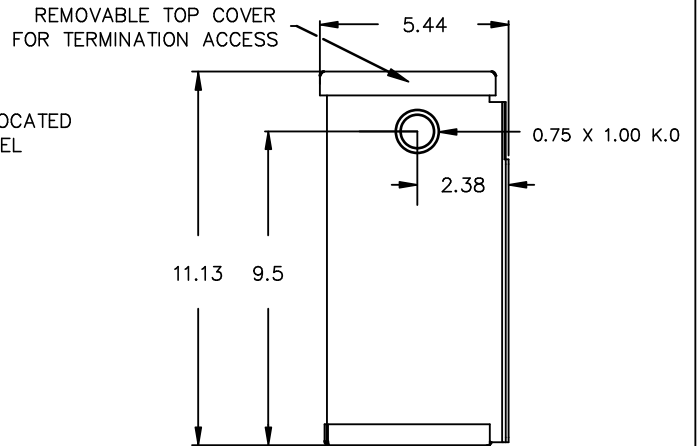
SHEET 1 OF 2  
EDB Y009PKCB3LOU

0.1 httpd 2026/04/03 14:36

FRONT VIEW



SIDE VIEW



All Dimensions in inches

ENCLOSURE COLOR : ANSI 61 GREY – OUTDOOR

H.V.1. TERMINAL DETAIL

L.V.1. TERMINAL DETAIL

#14 AWG STRANDED COPPER  
WIRE LEADS

#14 AWG STRANDED COPPER  
WIRE LEADS

CUSTOMER NOTES:

- HV1 TERMINATED AT TOP REAR
- LV1 TERMINATED AT TOP FRONT



TITLE: 3 PH ENCAPSULATED AUTO TRANSFORMER

				DES: MCHRISTM
				DATE: 10/08/25
NO.	DATE	BY	REVISION	SCALE: NTS

SHEET 2 OF 2

EDB Y009PKCB310U