



TITLE: HPS TITAN ENCAPSULATED TRANSFORMER
NAMEPLATE INFORMATION


3	21/07/16	PP	EDB UPDATE	DES: PPICASSI
2	20/03/17	PP	SEISMIC UPDATE	DATE: 19/01/09
NO.	DATE	BY	REVISION	SCALE: NTS

SHEET 1 OF 3

EDB TN2A0003QKKA

3.0 httpd 2026/04/03 15:45

THIS DRAWING CONTAINS STRICTLY CONFIDENTIAL INFORMATION BELONGING TO HAMMOND POWER SOLUTIONS AND MUST NOT BE DISTRIBUTED OUTSIDE AUTHORIZED PARTIES.




POWER SOLUTIONS
Guelph, ONT Compton, CA Baraboo, WI Monterrey, MX

HPS Titan™ N
Dry Type Encapsulated Transformer
Transformateur de Type Sec Encapsulé

Part No. **TN2A0003QKKA**

UL LISTED
31GW E258346
GENERAL PURPOSE TRANSFORMER FOR USE IN HAZARDOUS LOCATIONS
BUILT TO ABS STANDARD



8 03423 15232 11

HAZARDOUS LOCATIONS CLASS 1, DIV 2
GROUPS A, B, C & D
TEMPERATURE CODE: T3C
HAZARDOUS LOCATIONS CLASS 1, ZONE 2
GROUPS IIC, T3
ELECTROSTATIC SHIELD

VOLTS	CURRENT COURANT	% RATED VOLTAGE % TENSION NOMINALE	CONNECTION EACH PHASE CONNECTION PAR PHASE
504	3.4	105	1-2
480	3.6	100	2-3
456	3.8	95	3-4
432	4.0	90	4-5
624	2.8	108	1-2
600	2.9	104	2-3
575	3.0	100	3-4
552	3.1	96	4-5

Cust. Ref. [] Serial No. []
Ref. du Client [] No. de Serie []

Phase 3 HV/HT 480V/600V 2.9A

Type HZQT BIL 10 kV

Cooling ANC Term Bornes H1 H2 H3

kVA 3 LV/BT 480Y/277V 3.6A

Temp. Rise 80 °C BIL 10 kV

Temp Class 130 °C Term Bornes X0 X1 X2 X3

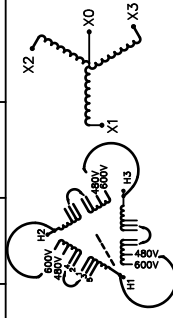
Winding CU

Frequency 60

Impedance % 3.0

Encl. Type 4

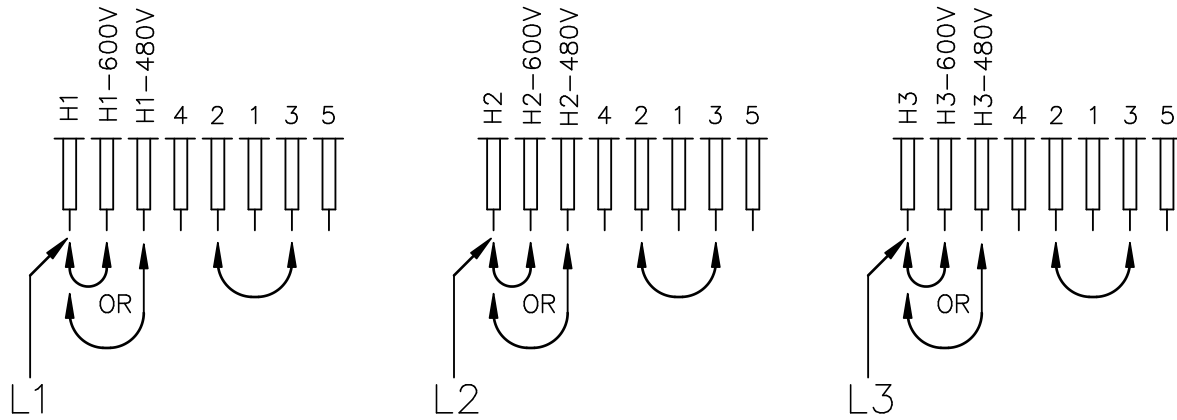
Weight lbs 50



WARNING - EXPLOSION HAZARD. DO NOT DISCONNECT EQUIPMENT WHILE THE CIRCUIT IS LIVE OR UNLESS THE AREA IS FREE OF IGNITABLE CONCENTRATIONS.
AVERTISSEMENT : RISQUE D'EXPLOSION. NE PAS DÉBRANCHER PENDANT QUE LE CIRCUIT EST SOUS TENSION OU À MOINS QUE L'EMPLACEMENT NE SOIT EXEMPT DE CONCENTRATIONS INFLAMMABLES.
SEISMIC QUALIFICATIONS:
AS FLOOR MOUNT ONLY
IBC 2018/ASCE 7-16
SDS<=2.0g Z/h=0 Ip=1.5

d000200bq

INPUT (HV) WINDING CONNECTIONS



Rated Voltage	Connect	Input Line Connection	TAP CONNECTIONS		
			Tap %	Tap Voltage	Tap Connection
600V	H1 to H1-600V	H1	104	624V	1 to 2
	H2 to H2-600V	H2	100	600V	2 to 3
	H3 to H3-600V	H3	96	576V	3 to 4
			92	552V	4 to 5

Rated Voltage	Connect	Input Line Connection	TAP CONNECTIONS		
			Tap %	Tap Voltage	Tap Connection
480V	H1 to H1-480V	H1	105	504V	1 to 2
	H2 to H2-480V	H2	100	480V	2 to 3
	H3 to H3-480V	H3	95	456V	3 to 4
			90	432V	4 to 5



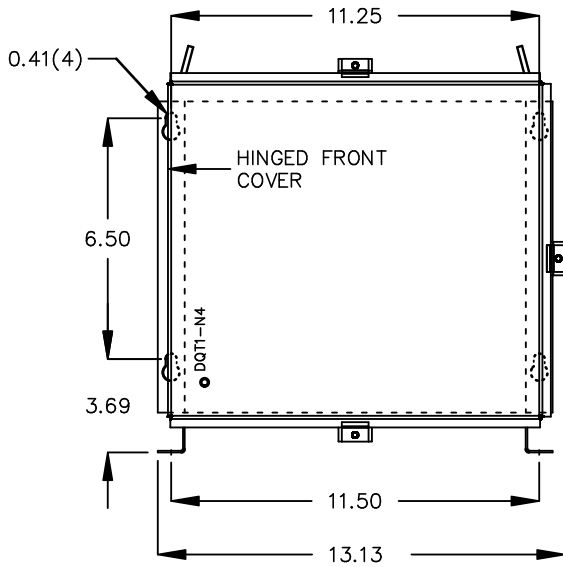
TITLE: HPS TITAN ENCAPSULATED TRANSFORMER

3	21/07/16	PP	EDB UPDATE	DES: PPICASSI
2	20/03/17	PP	SEISMIC UPDATE	DATE: 19/01/09
NO.	DATE	BY	REVISION	SCALE: NTS

SHEET 2 OF 3

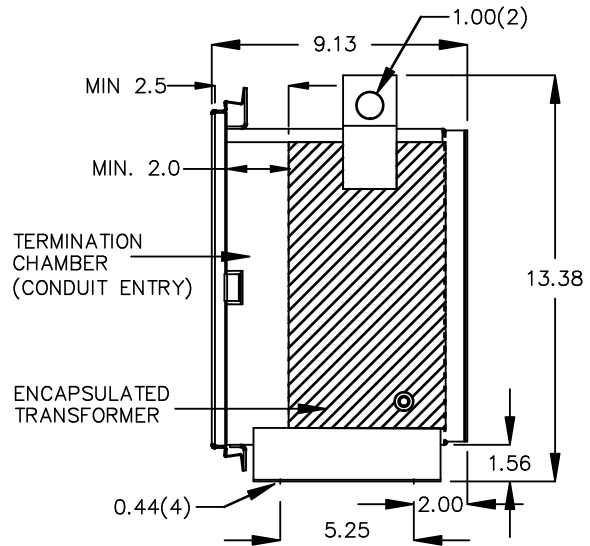
EDB TN2A00030KKA

FRONT VIEW



All Dimensions in inches

SIDE VIEW



ENCLOSURE COLOR : ANSI 61 GREY – OUTDOOR

H.V.1. TERMINAL DETAIL

L.V.1. TERMINAL DETAIL

#14 AWG STRANDED COPPER
WIRE LEADS

#14 AWG STRANDED COPPER
WIRE LEADS

CUSTOMER NOTES:

- HV1 TERMINATED AT BOTTOM FRONT
- LV1 TERMINATED AT TOP FRONT



TITLE: HPS TITAN ENCAPSULATED TRANSFORMER

3	21/07/16	PP	EDB UPDATE	DES: PPLICASSI
2	20/03/17	PP	SEISMIC UPDATE	DATE: 19/01/09
NO.	DATE	BY	REVISION	SCALE: NTS

SHEET 3 OF 3

EDB TN2A00030KKA