



TITLE: 3PH DISTRIBUTION TRANSFORMER
NAMEPLATE INFORMATION


NO.	DATE	BY	REVISION	SCALE:
2	21/07/16	PP	EDB UPDATE	DES: PPICASSI
1	20/03/17	PP	SEISMIC UPDATE	DATE: 19/01/09
				SCALE: NTS

SHEET 1 OF 2

EDB TN2A0003PBKA

2.0 httpd 2026/04/04 20:59

THIS DRAWING CONTAINS STRICTLY CONFIDENTIAL INFORMATION BELONGING TO HAMMOND POWER SOLUTIONS AND MUST NOT BE DISTRIBUTED OUTSIDE AUTHORIZED PARTIES.




POWER SOLUTIONS
Guelph, ONT Compton, CA Baraboo, WI
Monterrey, MX

HPS Titan™ N
Dry Type Encapsulated Transformer
Transformateur de Type Sec Encapsulé

Part No. **TN2A0003PBKA**

UL US LISTED
31GW E258346
GENERAL PURPOSE TRANSFORMER FOR USE IN HAZARDOUS LOCATIONS
BUILT TO ABS STANDARD



8 03423 15231 4

HAZARDOUS LOCATIONS CLASS 1, DIV 2
GROUPS A, B, C & D
TEMPERATURE CODE: T3C

HAZARDOUS LOCATIONS CLASS 1, ZONE 2
GROUPS IIC, T3
ELECTROSTATIC SHIELD

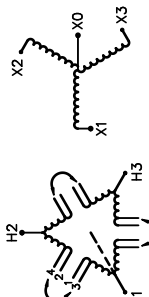
TEMPERATURE CLASSIFICATION: T3C

Serial No. No. de Serie	HV/HT	600V	CONNECTION EACH PHASE CONNECTION PAR PHASE
3	BIL	— kV	1-2 2-3 3-4
HZQT	Term Bornes	H1 H2 H3	
ANC	LV/BT	208Y/120V 8.3A	
3	BIL	— kV	
80 °C	Term Bornes	X0 X1 X2 X3	
130 °C			
CU			
60			
3.5			
4			
68			

hammond HPS Titan™ N
Dry Type Encapsulated Transformer
Transformateur de Type Sec Encapsulé

Part No. **TN2A0003PBKA**

Cust. Ref. Ref. du Client	Serial No. No. de Serie	HV/HT	600V	CONNECTION EACH PHASE CONNECTION PAR PHASE
	3	BIL	— kV	1-2 2-3 3-4
Type	HZQT	Term Bornes	H1 H2 H3	
Cooling Refrondissement	ANC	LV/BT	208Y/120V 8.3A	
kVA	3	BIL	— kV	
Temp. Rise Echauffement	80 °C	Term Bornes	X0 X1 X2 X3	
Temp Class Classe Temp	130 °C			
Winding Enroulement	CU			
Frequency Hz	60			
Impedance % @ 100 °C	3.5			
Encl. Type Type de Coffrage	4			
Weight Poids	68			

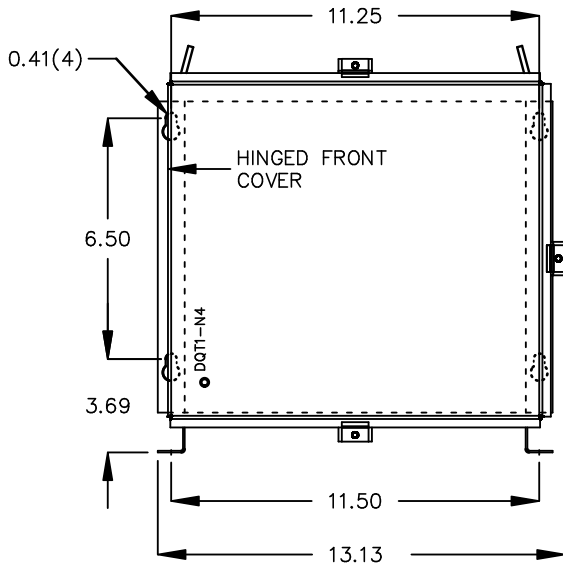


H1 H2 H3 X0 X1 X2 X3

WARNING - EXPLOSION HAZARD. DO NOT DISCONNECT EQUIPMENT WHILE THE CIRCUIT IS LIVE OR UNLESS THE AREA IS FREE OF IGNITABLE CONCENTRATIONS.
AVERTISSEMENT : RISQUE D'EXPLOSION. NE PAS DÉBRANCHER PENDANT QUE LE CIRCUIT EST SOUS TENSION OU À MOINS QUE L'ÉPLACEMENT NE SOIT EXEMPT DE CONCENTRATIONS INFLAMMABLES.
SEISMIC QUALIFICATIONS:
AS FLOOR MOUNT ONLY
IBC 2018/ASCE 7-16
SDS<=2.0g Z/h=0 Ip=1.5

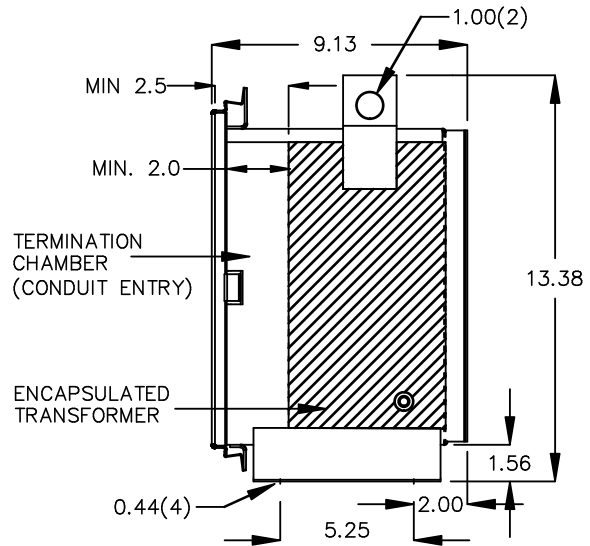
000200bq

FRONT VIEW



All Dimensions in inches

SIDE VIEW



ENCLOSURE COLOR : ANSI 61 GREY – OUTDOOR

H.V.1. TERMINAL DETAIL

L.V.1. TERMINAL DETAIL

#14 AWG STRANDED COPPER
WIRE LEADS

#14 AWG STRANDED COPPER
WIRE LEADS

CUSTOMER NOTES:

- HV1 TERMINATED AT BOTTOM FRONT
- LV1 TERMINATED AT TOP FRONT



TITLE: 3PH DISTRIBUTION TRANSFORMER

2	21/07/16	PP	EDB UPDATE	DES: PPLICASSI
1	20/03/17	PP	SEISMIC UPDATE	DATE: 19/01/09
NO.	DATE	BY	REVISION	SCALE: NTS

SHEET 2 OF 2

EDB TN2A0003PBKA