



TITLE: HPS TITAN ENCAPSULATED TRANSFORMER
NAMEPLATE INFORMATION


NO.	DATE	BY	REVISION	SCALE:
2	21/07/16	PP	EDB UPDATE	DES: PPICASSI
1	20/03/17	PP	SEISMIC UPDATE	DATE: 19/01/09
				SCALE: NTS

SHEET 1 OF 2

EDB TN2A0002PBKA

2.0 httpd 2026/04/03 14:20


THIS DRAWING CONTAINS STRICTLY CONFIDENTIAL INFORMATION BELONGING TO HAMMOND POWER SOLUTIONS AND MUST NOT BE DISTRIBUTED OUTSIDE AUTHORIZED PARTIES.



POWER SOLUTIONS
Guelph, ONT Compton, CA Baraboo, WI Monterrey, MX

HPS Titan™ N
Dry Type Encapsulated Transformer
Transformateur de Type Sec Encapsulé

UL LISTED
31GW E258346
GENERAL PURPOSE TRANSFORMER FOR USE IN HAZARDOUS LOCATIONS
BUILT TO ABS STANDARD



8 03423 15227 17

000200bq

Cust. Ref. Ref. du Client		Serial No. No. de Serie		CONNECTION EACH PHASE GROUPS A, B, C & D	HAZARDOUS LOCATIONS CLASS 1, DIV 2
Phase	3	HV/HT	600V	TEMPERATURE CODE: T3C	HAZARDOUS LOCATIONS CLASS 1, ZONE 2
Type	HZQT	BIL	10 kV	GROUPS IIC, T3	ELECTROSTATIC SHIELD
Cooling Refroidissement	ANC	Term Bornes	H1 H2 H3	1-2 2-3 3-4	
kVA	2	LV/BT	208Y/120V 5.6A		
Temp. Rise Echauffement	80 °C	BIL	10 kV		
Temp Class Classe Temp	130 °C	Term Bornes	X0 X1 X2 X3		
Winding Enroulement	CU				
Frequency Hz	60				
Impedance % @ 100 °C	4.7				
Encl. Type Type de Coffrage	4				
Weight Poids	50				

VOLTS

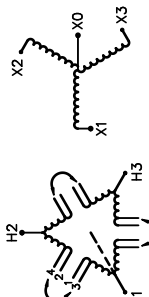
630
600
570

CURRENT
COURANT

1.8
1.9
2.0

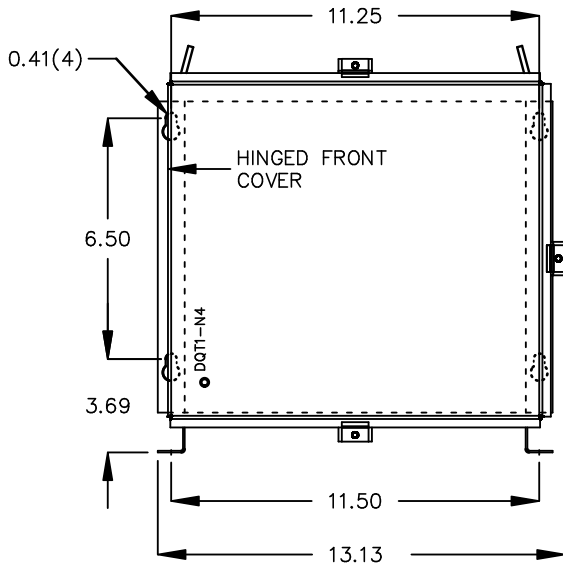
% RATED
% TENSION
NOMINALE

105
100
95



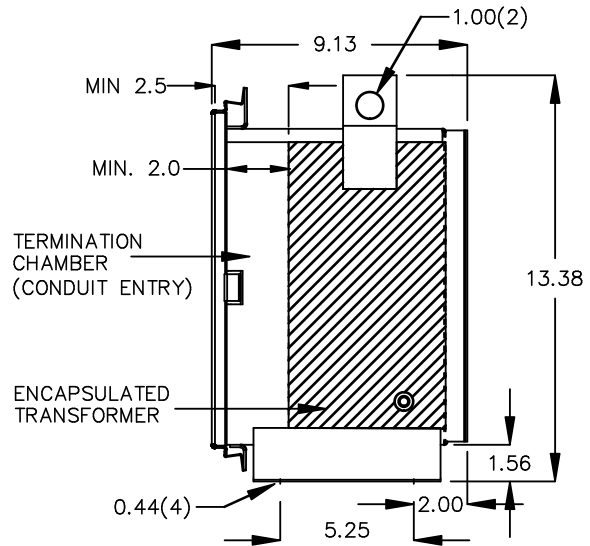
WARNING - EXPLOSION HAZARD. DO NOT DISCONNECT EQUIPMENT WHILE THE CIRCUIT IS LIVE OR UNLESS THE AREA IS FREE OF IGNITABLE CONCENTRATIONS.
AVERTISSEMENT : RISQUE D'EXPLOSION. NE PAS DÉBRANCHER PENDANT QUE LE CIRCUIT EST SOUS TENSION OU À MOINS QUE L'ÉPLACEMENT NE SOIT EXEMPT DE CONCENTRATIONS INFLAMMABLES.
SEISMIC QUALIFICATIONS:
AS FLOOR MOUNT ONLY
IBC 2018/ASCE 7-16
SDS<=2.0g Z/h=0 Ip=1.5

FRONT VIEW



All Dimensions in inches

SIDE VIEW



ENCLOSURE COLOR : ANSI 61 GREY – OUTDOOR

H.V.1. TERMINAL DETAIL

L.V.1. TERMINAL DETAIL

#14 AWG STRANDED COPPER
WIRE LEADS

#14 AWG STRANDED COPPER
WIRE LEADS

CUSTOMER NOTES:

- HV1 TERMINATED AT BOTTOM FRONT
- LV1 TERMINATED AT TOP FRONT



TITLE: HPS TITAN ENCAPSULATED TRANSFORMER

2	21/07/16	PP	EDB UPDATE	DES: PPICASSI
1	20/03/17	PP	SEISMIC UPDATE	DATE: 19/01/09
NO.	DATE	BY	REVISION	SCALE: NTS

SHEET 2 OF 2

EDB TN2A0002PBKA