




TITLE: 3PH DISTRIBUTION TRANSFORMER
NAMEPLATE INFORMATION

NO.	DATE	BY	REVISION

DES: AOPPER
DATE: 24/03/15
SCALE: NTS

SHEET 1 OF 3

EDBTE3A0440KK




POWER SOLUTIONS
Guelph, ONT Compton, CA
Baraboo, WI Monterrey, MX

hammond HPS Tribune™ E
Energy Efficient Drive Isolation Transformer
Transformateur Pour Variateur de Vitesse à Efficacité Énergétique

Part No. **TE3A0440KK**


LISTED



DRY TYPE TRANSFORMER
77US E112313

UL
ALSO LISTED TO ENERGY STANDARD C900.15-18
BY UNDERWRITERS LABORATORIES INC. @ 316

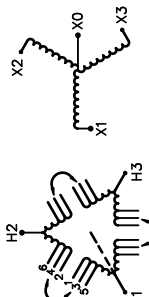
LR 3902



8 03423 14387 19

Cust. Ref. Ref. du Client	Serial No. No. de Serie	480V	529A		
Phase	HV/HT	480V	529A		
Type	BIL	10 kV			
Cooling Refroidissement	Term Bornes	H1 H2 H3			
kVA	LV/BT	480Y/277V	529A		
Temp. Rise Échauffement	BIL	10 kV			
Temp Class Classe Temp	Term Bornes	X0 X1 X2 X3			
Winding Enroulement	Energy Regulations	DOE 10 CFR PART 431:2016			
Frequency Fréquence Hz	Reglements de Énergétique	CEE ACT SOR/2018-201			
Impedance % @ 170 °C					
Encl. Type Type de Coffrage					
Weight Poids			2550/1157		

VOLTS	CURRENT COURANT	% RATED % TENSION NOMINALE	CONNECTION EACH PHASE CONNECTION PAR PHASE
496	512	103.4	1-2
488	520	101.7	2-3
480	529	100	3-4
472	538	98.3	4-5
464	548	96.6	5-6

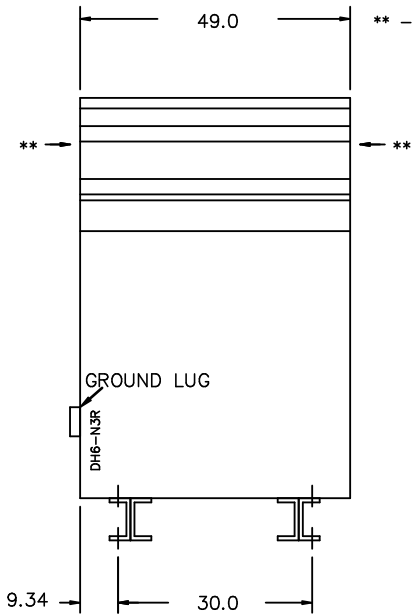


SEISMIC QUALIFICATIONS:
AS FLOOR MOUNT ONLY
IBC 2018/ASCE 7-16
SDS<=2.0g Z/h=0 Ip=1.5

d000194hb

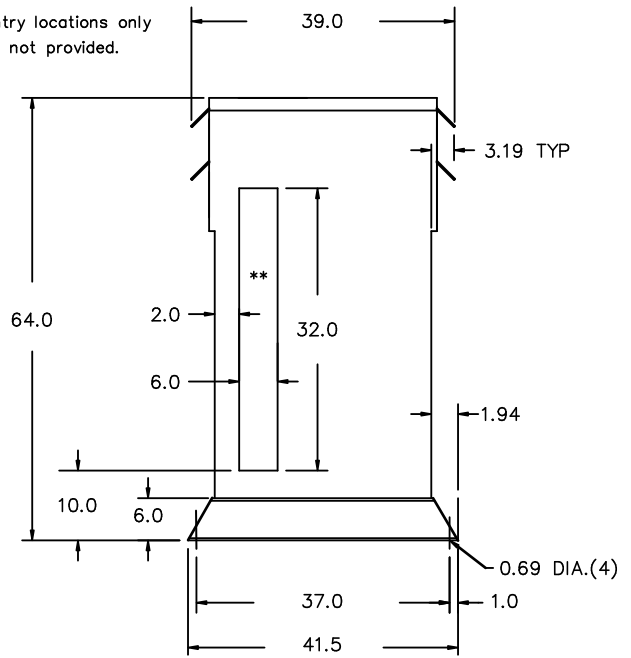
SPACINGS BETWEEN ANY VENTILATED ENCLOSURE PANEL AND ANY ADJACENT WALL SHALL BE A MINIMUM OF 8.25 INCHES ELECTROSTATIC SHIELD

FRONT VIEW



** - Recommended cable entry locations only
cutouts & gland plates not provided.

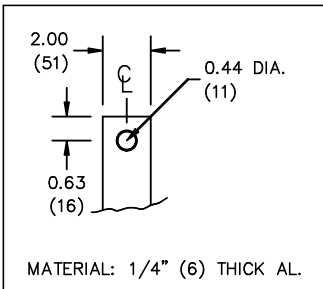
SIDE VIEW



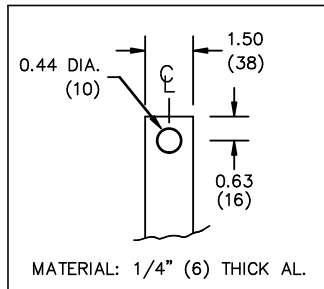
All Dimensions in inches

ENCLOSURE COLOR : ANSI 61 GREY - OUTDOOR

HV TERMINAL DETAIL



LV TERMINAL DETAIL



CUSTOMER NOTES:

- HV TERMINATED AT TOP FRONT
- LV TERMINATED AT BOTTOM FRONT
- C/W 1-"NC"- THERMOSTAT PER COIL CONNECTED TO T.B.



TITLE: 3PH DISTRIBUTION TRANSFORMER

DES:	AOPPER
DATE:	24/03/15
SCALE:	NTS

NO.	DATE	BY	REVISION

SHEET 2 OF 3

EDBTE3A0440KK

THIS DRAWING CONTAINS STRICTLY CONFIDENTIAL INFORMATION BELONGING TO HAMMOND POWER SOLUTIONS AND MUST NOT BE DISTRIBUTED OUTSIDE AUTHORIZED PARTIES.

ENCLOSURE BOTTOM VIEW



NOTE:
 WHEN BOTTOM CABLE ENTRY IS OPTED, THE SPACE USED FOR CONDUITS IN THE FRONT OF THE TRANSFORMER SHOULD NOT OBSTRUCT MORE THAN 50% OF THE FRONT AIR INTAKE AREA DEFINED BETWEEN THE BOTTOM PLATE AND THE SUPPORTING LEGS.
 SEE MANUAL FOR ADDITIONAL INFORMATION



TITLE: 3PH DISTRIBUTION TRANSFORMER
 ENCLOSURE BOTTOM VIEW

				DES: AOPPER
				DATE: 24/03/15
NO.	DATE	BY	REVISION	SCALE: NTS

SHEET 3 OF 3

EDBTE3A0440KK