



TITLE: 3PH DISTRIBUTION TRANSFORMER
NAMEPLATE INFORMATION


NO.	DATE	BY	REVISION	DES: AOPPER
				DATE: 23/07/18
				SCALE: NTS

SHEET 1 OF 3

EDBTE3A0220JCM

0.0 httpd 2026/04/05 07:28

THIS DRAWING CONTAINS STRICTLY CONFIDENTIAL INFORMATION BELONGING TO HAMMOND POWER SOLUTIONS AND MUST NOT BE DISTRIBUTED OUTSIDE AUTHORIZED PARTIES.




POWER SOLUTIONS
Guelph, ONT Compton, CA
Baraboo, WI Monterrey, MX

hammond HPS Tribune™ E
Energy Efficient Drive Isolation Transformer
Transformateur Pour Variateur de Vitesse à Efficacité Énergétique

Part No. TE3A0220JCM

LISTED

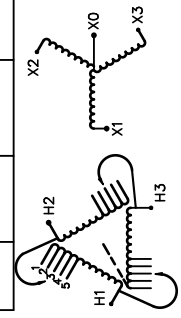


UL E112313

LR 3902
DRY TYPE TRANSFORMER
800 3423174452
ALSO REFER TO CATALOGUE
TO ENERGY STANDARDS CROU-18
BY UNDERWRITERS LABORATORIES INC. 01/18

Cust. Ref. Ref. du Client	Serial No. No. de Serie	460V	276A		
Phase	HV/HT	476	267	103.4	1
Type	BIL	468	272	101.7	2
Cooling Refroidissement	Term Bornes	460	276	100	3
kVA	LV/BT	452	281	98.3	4
Temp. Rise Échauffement	BIL	444	286	96.6	5
Temp Class Classe Temp	Term Bornes				
Winding Enroulement	CU				
Frequency Fréquence Hz	60				
Impedance % @ 170 °C	4.9				
Encl. Type Type de Coffrage	3R				
Weight Poids lbs/kg	1540/699				

SPACINGS BETWEEN ANY VENTILATED ENCLOSURE PANEL AND ANY ADJACENT WALL SHALL BE A MINIMUM OF 5 INCHES ELECTROSTATIC SHIELD



SEISMIC QUALIFICATIONS:
AS FLOOR MOUNT ONLY
IBC 2018/ASCE 7-16
SDS<=2.0g Z/h=1 p=1.5

d000194hb



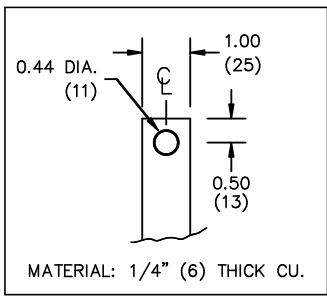
All Dimensions in inches

ENCLOSURE COLOR :ANSI 61 GREY – OUTDOOR

HV TERMINAL DETAIL

LV TERMINAL DETAIL

MECHANICAL TYPE LUGS INCLUDED
SUITABLE FOR 350MCM-6 CU/AL
CONDUCTORS
2 CONDUCTORS PER PHASE



CUSTOMER NOTES:

- HV TERMINATED AT TOP FRONT
- LV TERMINATED AT BOTTOM FRONT
- C/W 1-"NC"- THERMOSTAT PER COIL CONNECTED TO T.B.



TITLE: 3PH DISTRIBUTION TRANSFORMER

DES:	AOPPER
DATE:	23/07/18
SCALE:	NTS

NO.	DATE	BY	REVISION

SHEET 2 OF 3

EDBTE3A0220JCM



NOTE:
 WHEN BOTTOM CABLE ENTRY IS OPTED, THE SPACE USED FOR CONDUITS IN THE FRONT OF THE TRANSFORMER SHOULD NOT OBSTRUCT MORE THAN 50% OF THE FRONT AIR INTAKE AREA DEFINED BETWEEN THE BOTTOM PLATE AND THE SUPPORTING LEGS.
 SEE MANUAL FOR ADDITIONAL INFORMATION



TITLE: 3PH DISTRIBUTION TRANSFORMER
 ENCLOSURE BOTTOM VIEW

				DES: AOPPER
				DATE: 23/07/18
NO.	DATE	BY	REVISION	SCALE: NTS

SHEET 3 OF 3

EDBTE3A0220JCM