



TITLE: 3PH DISTRIBUTION TRANSFORMER
NAMEPLATE INFORMATION

NO.	DATE	BY	REVISION


DES: PPI/CASSI
DATE: 18/06/05
SCALE: NTS

SHEET 1 OF 3

EDBTE3A0220JC

0.0 httpd 2026/04/04 07:21

THIS DRAWING CONTAINS STRICTLY CONFIDENTIAL INFORMATION BELONGING TO HAMMOND POWER SOLUTIONS AND MUST NOT BE DISTRIBUTED OUTSIDE AUTHORIZED PARTIES.




POWER SOLUTIONS
Guelph, ONT Compton, CA
Baraboo, WI Monterrey, MX

hammond HPS Tribune™ E
Energy Efficient Drive Isolation Transformer
Transformateur Pour Variateur de Vitesse à Efficacité Énergétique


Part No. **TE3A0220JC**

LISTED



UL 775
E112313

LR 3902
DRY TYPE
TRANSFORMER



8 03423 14333 6
ALSO REFER TO STANDARD CATALOG
BY UNDERWRITERS LABORATORIES INC. @ 316

Cust. Ref. Ref. du Client	Serial No. No. de Serie		
Phase	HV/HT	460V	276A
Type	BIL	10 kV	
Cooling Refroidissement	ANN	H1 H2 H3	
kVA	220	230Y/133V	552A
Temp. Rise Échauffement	150 °C	10 kV	
Temp Class Classe Temp	220 °C	X0 X1 X2 X3	
Winding Enroulement	AL	DOE 10 CFR PART 431:2016	
Frequency Fréquence Hz	60	CEE ACT SOR/2018-201	
Impedance % @ 170 °C	6.2		
Encl. Type Type De Coffrage	3R		
Weight Poids	1550		

VOLTS

483
472
460
448
437

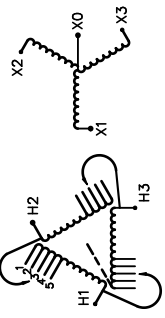
CURRENT
COURANT

263
269
276
283
291

% RATED
% TENSION
NOMINALE

105
102.5
100
97.5
95

CONNECTION EACH PHASE CONNECTION PAR PHASE	1 2 3 4 5
---	-----------------------



SPACINGS BETWEEN ANY VENTILATED ENCLOSURE PANEL AND ANY ADJACENT WALL SHALL BE A MINIMUM OF 5 INCHES EXCEPT WHEN WALL MOUNTED USING APPROVED WALL MOUNTING KIT ELECTROSTATIC SHIELD

SEISMIC QUALIFICATIONS:
AS FLOOR MOUNT ONLY
IBC 2018/ASCE 7-16
SDS<=2.0g Z/h=0 Ip=1.5

d000194hb



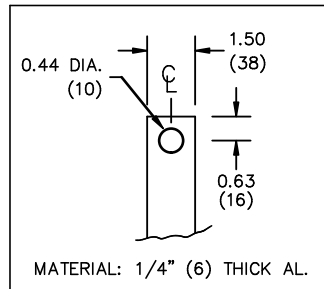
All Dimensions in inches

ENCLOSURE COLOR :ANSI 61 GREY – OUTDOOR

HV TERMINAL DETAIL

LV TERMINAL DETAIL

MECHANICAL TYPE LUGS INCLUDED
SUITABLE FOR 350MCM-6 CU/AL
CONDUCTORS
2 CONDUCTORS PER PHASE



CUSTOMER NOTES:

- HV TERMINATED AT TOP FRONT
- LV TERMINATED AT BOTTOM FRONT
- C/W 1-”NC”- THERMOSTAT PER COIL CONNECTED TO T.B.



TITLE: 3PH DISTRIBUTION TRANSFORMER

DES:	PPICASSI
DATE:	18/06/05
SCALE:	NTS

NO.	DATE	BY	REVISION

SHEET 2 OF 3

EDBTE3A0220JC

ENCLOSURE BOTTOM VIEW



NOTE:
 WHEN BOTTOM CABLE ENTRY IS OPTED, THE SPACE USED FOR CONDUITS IN THE FRONT OF THE TRANSFORMER SHOULD NOT OBSTRUCT MORE THAN 50% OF THE FRONT AIR INTAKE AREA DEFINED BETWEEN THE BOTTOM PLATE AND THE SUPPORTING LEGS.
 SEE MANUAL FOR ADDITIONAL INFORMATION



TITLE: 3PH DISTRIBUTION TRANSFORMER
 ENCLOSURE BOTTOM VIEW

				DES: PPICASSI
				DATE: 18/06/05
NO.	DATE	BY	REVISION	SCALE: NTS

SHEET 3 OF 3

EDBTE3A0220JC