



TITLE: 3PH DISTRIBUTION TRANSFORMER  
NAMEPLATE INFORMATION


DES:	CSHAH
DATE:	20/07/21
SCALE:	NTS

SHEET 1 OF 3

EDBTE3A0145JCM

0.0 httpd 2026/04/02 06:21

THIS DRAWING CONTAINS STRICTLY CONFIDENTIAL INFORMATION BELONGING TO HAMMOND POWER SOLUTIONS AND MUST NOT BE DISTRIBUTED OUTSIDE AUTHORIZED PARTIES.




**POWER SOLUTIONS**  
Guelph, ONT Compton, CA Baraboo, WI Monterrey, MX

**hammond** HPS Tribune™ E  
Energy Efficient Drive Isolation Transformer  
Transformateur Pour Variateur de Vitesse à Efficacité Énergétique

Part No. **TE3A0145JCM**

**LISTED**



LR 3902  
UL 77US  
E112313

DRY TYPE TRANSFORMER  
800 3423174450  
ALSO REFER TO STANDARD CATALOGUE  
ON ENERGY EFFICIENT AND AOD CATALOGUE  
BY UNDERWRITERS LABORATORIES INC. @ 316

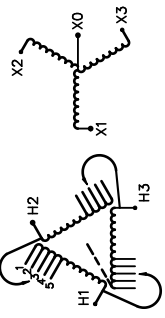
Cust. Ref. Ref. du Client	Serial No. No. de Serie	460V	182A
Phase	HV/HT	10 kV	182A
Type	BIL	H1 H2 H3	364A
Cooling Refroidissement	ANN	230Y/133V	364A
kVA	145	10 kV	182A
Temp. Rise Échauffement	150 °C	10 kV	182A
Temp Class Classe Temp	220 °C	X0 X1 X2 X3	182A
Winding Enroulement	CU	DOE 10 CFR PART 431:2016	182A
Frequency Fréquence Hz	60	CEE ACT SOR/2018-201	182A
Impedance % @ 170 °C	4.9		182A
Encl. Type Type De Coffrage	3R		182A
Weight Poids	1050		182A

VOLTS  
483  
472  
460  
448  
437

CURRENT  
COURANT  
173  
178  
182  
187  
192

% RATED  
% TENSION  
NOMINALE  
105  
102.5  
100  
97.5  
95

CONNECTION EACH PHASE CONNECTION PAR PHASE	1	2	3	4	5
---	---	---	---	---	---



SEISMIC QUALIFICATIONS:  
AS FLOOR MOUNT ONLY  
IBC 2018/ASCE 7-16  
SDS<=2.0g Z/h=1 Ip=1.5

d000194hb



All Dimensions in inches

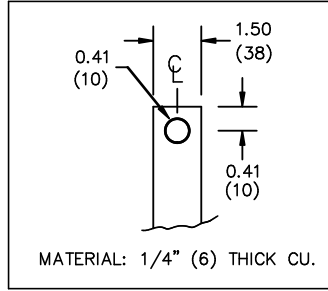
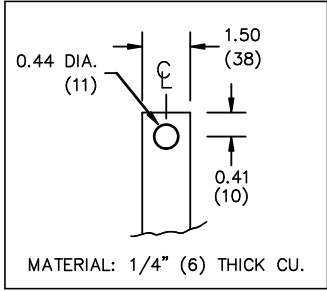
ENCLOSURE COLOR :ANSI 61 GREY – OUTDOOR

HV TERMINAL DETAIL

LV TERMINAL DETAIL

X0 TERMINAL DETAIL

MECHANICAL TYPE LUGS INCLUDED  
SUITABLE FOR 350MCM-6 CU/AL  
CONDUCTORS  
1 CONDUCTOR PER PHASE



CUSTOMER NOTES:

- HV TERMINATED AT TOP FRONT
- LV TERMINATED AT BOTTOM FRONT
- X0 TERMINATED AT BOTTOM FRONT
- C/W 1-"NC"- THERMOSTAT PER COIL CONNECTED TO T.B.



TITLE: 3PH DISTRIBUTION TRANSFORMER

DES:	CSHAH
DATE:	20/07/21
SCALE:	NTS

NO.	DATE	BY	REVISION

SHEET 2 OF 3

EDBTE3A0145JCM



NOTE:  
 WHEN BOTTOM CABLE ENTRY IS OPTED, THE SPACE USED FOR CONDUITS IN THE FRONT OF THE TRANSFORMER SHOULD NOT OBSTRUCT MORE THAN 50% OF THE FRONT AIR INTAKE AREA DEFINED BETWEEN THE BOTTOM PLATE AND THE SUPPORTING LEGS.  
 SEE MANUAL FOR ADDITIONAL INFORMATION



TITLE: 3PH DISTRIBUTION TRANSFORMER  
ENCLOSURE BOTTOM VIEW

				DES: CSHAH
				DATE: 20/07/21
NO.	DATE	BY	REVISION	SCALE: NTS

SHEET 3 OF 3

EDBTE3A0145JCM