



TITLE: 3PH DISTRIBUTION TRANSFORMER
NAMEPLATE INFORMATION

NO.	DATE	BY	REVISION	SCALE:
2	21/07/16	PP	EDB UPDATE	DES: RMOVVA
1	20/03/17	PP	SEISMIC UPDATE	DATE: 18/07/12
				NTS

SHEET 1 OF 3

EDBSK3A0500PB4S

2.0 httpd 2026/04/02 12:26

THIS DRAWING CONTAINS STRICTLY CONFIDENTIAL INFORMATION BELONGING TO HAMMOND POWER SOLUTIONS AND MUST NOT BE DISTRIBUTED OUTSIDE AUTHORIZED PARTIES.

POWER SOLUTIONS
Guelph, ONT
Compton, CA

HPS Sentinel™ K
Energy Efficient Distribution Transformer
Transformateur de Distribution à Bon Rendement Énergétique

Hyderabad, IN
Baraboo, WI
Monterrey, MX

Part No. **SK3A0500PB4S**

Serial No. []
HV/HT 600V
BIL 10 kV
Term Bornes H1 H2 H3
LV/BT 208Y/120V 1388A
BIL 10 kV
Term Bornes X0 X1 X2 X3
Energy Regulations DOE 10 CFR PART 431:2016
Reglements Energetique CEE ACT SOR/2018-201

Current 458
469
481
493
506
520
535

Volts 630
615
600
585
570
555
540

Phase 3
Type K
Cooling ANN
kVA 500
Temp. Rise 150 °C
Temp Class 220 °C
Winding AL
Frequency 60
Impedance % 5.3
Encl Type 3R
Weight lbs 2900

Spacings between any ventilated enclosure panel and any adjacent wall shall be a minimum of 12 inches electrostatic shield

SEISMIC QUALIFICATIONS:
AS FLOOR MOUNT ONLY
IBC 2018/ASCE 7-16
SDS<=2.0g Z/n=0 Ip=1.5

CONNECTION DIAGRAM FOR CONNECTION PER PHASE

CONNECTION PER PHASE	% RATED VOLTAGE NOMINAL	CURRENT
1-2	105	458
2-3	102.5	469
3-4	100	481
4-5	97.5	493
5-6	95	506
6-7	92.5	520
7-8	90	535

LISTED

DRY TYPE TRANSFORMER E112313
ALSO VERIFIED IN ACCORDANCE TO ENERGY STANDARD CRO22-18 BY UNDERMETERS LABORATORIES INC. 316

8 03423 12875 3

SP @ LR 3902

d000187hb

FRONT VIEW



** - Recommended cable entry locations only
cutouts & gland plates not provided.

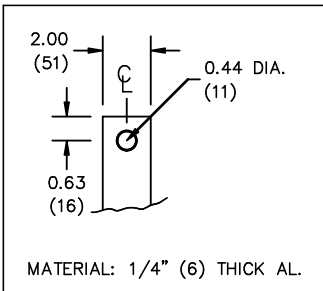
SIDE VIEW



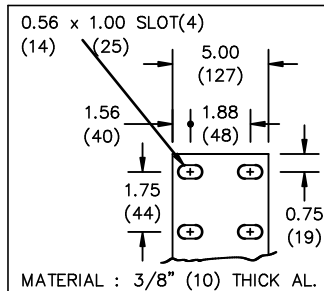
All Dimensions in inches

ENCLOSURE COLOR : ANSI 61 GREY - OUTDOOR

HV TERMINAL DETAIL



LV TERMINAL DETAIL



CUSTOMER NOTES:

- HV TERMINATED AT TOP FRONT
- LV TERMINATED AT BOTTOM FRONT
- 200% RATED NEUTRAL XO HAS TWO TERMINALS, DIVIDE CABLES EVENLY



TITLE: 3PH DISTRIBUTION TRANSFORMER

2	21/07/16	PP	EDB UPDATE	DES: RMOVVA
1	20/03/17	PP	SEISMIC UPDATE	DATE: 18/07/12
NO.	DATE	BY	REVISION	SCALE: NTS

SHEET 2 OF 3

EDBSK3A0500P84S

ENCLOSURE BOTTOM VIEW



NOTE:
 WHEN BOTTOM CABLE ENTRY IS OPTED, THE SPACE USED FOR CONDUITS IN THE FRONT OF THE TRANSFORMER SHOULD NOT OBSTRUCT MORE THAN 50% OF THE FRONT AIR INTAKE AREA DEFINED BETWEEN THE BOTTOM PLATE AND THE SUPPORTING LEGS.
 SEE MANUAL FOR ADDITIONAL INFORMATION



TITLE: 3PH DISTRIBUTION TRANSFORMER
 ENCLOSURE BOTTOM VIEW

2	21/07/16	PP	EDB UPDATE	DES: RMOVVA
1	20/03/17	PP	SEISMIC UPDATE	DATE: 18/07/12
NO.	DATE	BY	REVISION	SCALE: NTS

SHEET 3 OF 3

EDBSK3A0500P4S