



TITLE: 3PH DISTRIBUTION TRANSFORMER NAMEPLATE INFORMATION			
3	21/07/16	PP	EDB UPDATE
2	20/03/12	PP	NPL UPDATE
NO.	DATE	BY	REVISION
			DES: ASETH DATE: 16/12/09 SCALE: NTS

SHEET 1 OF 3
EDBSK3A0225KK4S

POWER SOLUTIONS

Guelph, ONT Compton, CA
Hyderabad, IN

HPS Sentinel™ K

Energy Efficient Distribution Transformer

Transformateur de Distribution à Bon Rendement Énergétique

Baraboo, WI
Monterrey, MX

Part No. SK3A0225KK4S

LR 3902

DRY TYPE TRANSFORMER E112313

ALSO VERIFIED IN ACCORDANCE TO ENERGY STANDARD CRO22-18 BY UNDERWRIERS LABORATORIES INC. 3106

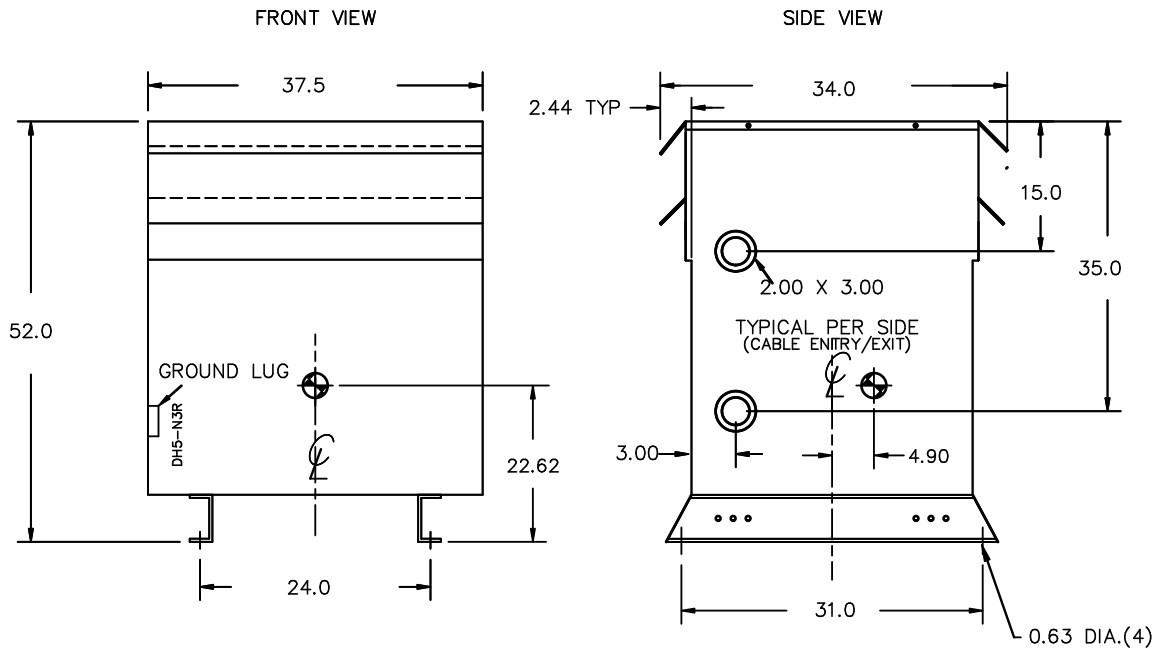
LISTED

Cust. Ref.	Serial No.	HV/HT	480V	271A	CONNECTION
Ref. du Client	No. de Serie				PAR PHASE
Phase	3	BIL	10 kV		1
Type	K	Term Bornes	H1 H2 H3		2
Cooling Refroidissement	ANN	LV/BT	480Y/277V	271A	3
kVA	225	BIL	10 kV		4
Temp. Rise Echauffement	150 °C	Term Bornes	X0 X1 X2 X3		5
Temp Class	220 °C	Energy Regulations	DOE 10 CFR PART 431:2016		6
Winding Enroulement	AL	Reglements Energetique	CEE ACT SOR/2018-201		7
Frequency	60	Suitable for non-sinusoidal current load with K-factor not to exceed 4			
Impedance % @ 170 °C	6.2	Convient à des courants non-sinusoidaux avec facteur K n'excédant pas			
Encl Type Type De Coffrage	3R				
Weight Poids	1450				

VOLTS	CURRENT COURANT	% RATED VOLTAGE % NOMINALE	CONNECTION PAR PHASE
504	258	105	1
492	264	102.5	2
480	271	100	3
468	278	97.5	4
456	285	95	5
444	293	92.5	6
432	301	90	7

SEISMIC QUALIFICATIONS:
XS FLOOR MOUNT ONLY
IBC 2018/ASCE 7-16
SDS<=2.0g Z/n=0 Ip=1.5

d000187hb



All Dimensions in inches

ENCLOSURE COLOR :ANSI 61 GREY – OUTDOOR

HV TERMINAL DETAIL

LV TERMINAL DETAIL

X0 TERMINAL DETAIL

MECHANICAL TYPE LUGS INCLUDED
SUITABLE FOR 350MCM-6 CU/AL
CONDUCTORS
2 CONDUCTORS PER PHASE

MECHANICAL TYPE LUGS INCLUDED
SUITABLE FOR 350MCM-6 CU/AL
CONDUCTORS
2 CONDUCTORS PER PHASE

MECHANICAL TYPE LUGS INCLUDED
SUITABLE FOR 600MCM-2 CU/AL
CONDUCTORS
1 CONDUCTOR PER PHASE

CUSTOMER NOTES:

- HV TERMINATED AT TOP FRONT
- LV TERMINATED AT BOTTOM FRONT
- X0 TERMINATED AT BOTTOM FRONT
- 200% RATED NEUTRAL X0 HAS QTY 2 LUGS



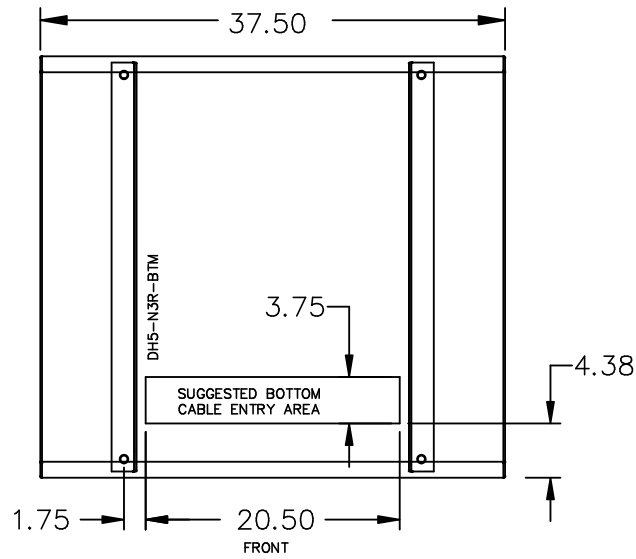
TITLE: 3PH DISTRIBUTION TRANSFORMER

3	21/07/16	PP	EDB UPDATE	DES: ASETH
2	20/03/12	PP	NPL UPDATE	DATE: 16/12/09
NO.	DATE	BY	REVISION	SCALE: NTS

SHEET 2 OF 3

EDBSK3A0225KK4S

ENCLOSURE BOTTOM VIEW



NOTE:
 WHEN BOTTOM CABLE ENTRY IS OPTED, THE SPACE USED FOR CONDUITS IN THE FRONT OF THE TRANSFORMER SHOULD NOT OBSTRUCT MORE THAN 50% OF THE FRONT AIR INTAKE AREA DEFINED BETWEEN THE BOTTOM PLATE AND THE SUPPORTING LEGS.
 SEE MANUAL FOR ADDITIONAL INFORMATION



TITLE: 3PH DISTRIBUTION TRANSFORMER
 ENCLOSURE BOTTOM VIEW

3	21/07/16	PP	EDB UPDATE	DES: ASETH
2	20/03/12	PP	NPL UPDATE	DATE: 16/12/09
NO.	DATE	BY	REVISION	SCALE: NTS

SHEET 3 OF 3

EDBSK3A0225KK4S