



TITLE: 3PH DISTRIBUTION TRANSFORMER
NAMEPLATE INFORMATION

NO.	DATE	BY	REVISION	DES: PPICASSI
				DATE: 23/03/16
				SCALE: NTS

SHEET 1 OF 3

EDBSK3A0225KB9S

0.0 httpd 2026/04/21 10:50

THIS DRAWING CONTAINS STRICTLY CONFIDENTIAL INFORMATION BELONGING TO HAMMOND POWER SOLUTIONS AND MUST NOT BE DISTRIBUTED OUTSIDE AUTHORIZED PARTIES.

POWER SOLUTIONS

Guelph, ONT Compton, CA Hyderabad, IN

HPS Sentinel™ K

Energy Efficient Distribution Transformer

Transformateur de Distribution à Bon Rendement Énergétique

Baraboo, WI Monterrey, MX

Part No. SK3A0225KB9S

LR 3902

DRY TYPE TRANSFORMER E112313

ALSO VERIFIED IN ACCORDANCE TO ENERGY STANDARD CRO22-18 BY UNDERWITERS LABORATORIES INC. 3106

LISTED

Cust. Ref. Ref. du Client	Serial No. No. de Serie	HV/HT	271A	VOLTS	CURRENT COURANT	% RATED VOLTAGE % NOMINALE	CONNECTION CONFIGURATION PAR PHASE
3	K	480V	10 kV	504	258	105	1
	ANN		H1 H2 H3	492	264	102.5	2
	225		LV/BT	480	271	100	3
	150 °C			468	278	97.5	4
	220 °C			456	285	95	5
	AL			444	293	92.5	6
	60			432	301		7
	6.2						
	3R						
	1710/776						

Temp. Rise
Echauffement

Temp Class

Winding
Enroulement

Frequency

Impedance %
@ 170 °C

Encl Type
Type De Coffrage

Weight lbs/kg

208Y/120V 625A

10 kV

X0 X1 X2 X3

DOE 10 CFR PART 431:2016

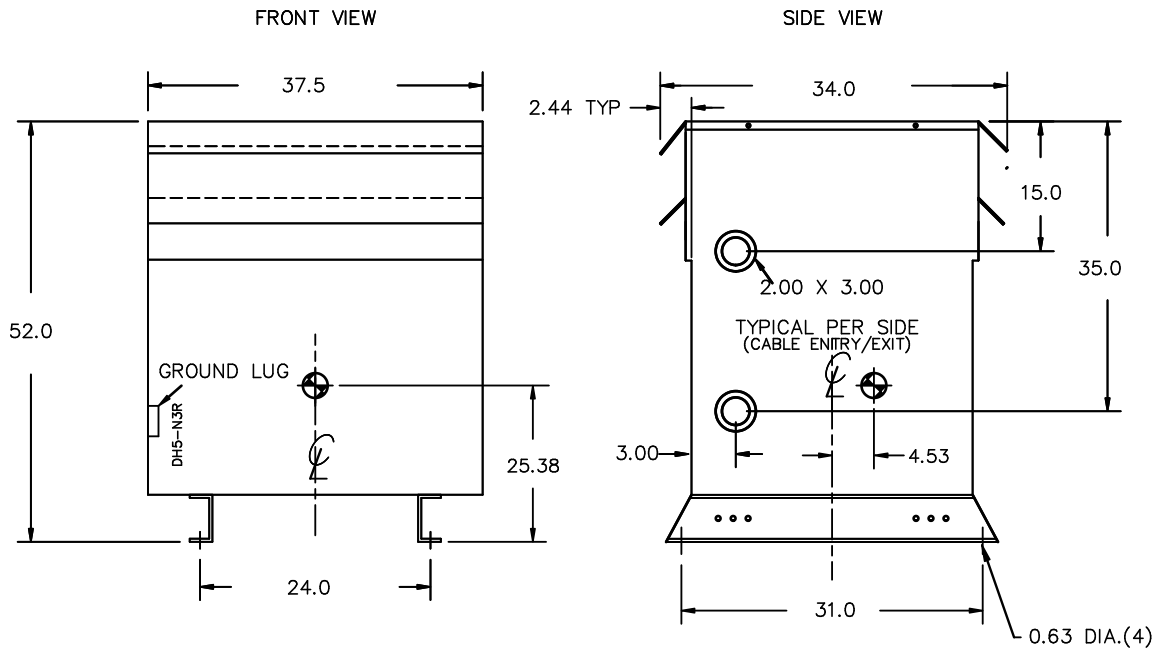
CEE ACT SOR/2018-201

Suitable for non-sinusoidal current load with K-factor not to exceed 9
Convient à des courants non-sinusoidaux avec facteur K n'excédant pas 9

SEISMIC QUALIFICATIONS:
X3 FLOOR MOUNT ONLY
IBC 2018/ASCE 7-16
SDS<=2.0g Z/n=0 Ip=1.5

SPACINGS BETWEEN ANY VENTILATED ENCLOSURE PANEL AND ANY ADJACENT WALL SHALL BE A MINIMUM OF 5 INCHES ELECTROSTATIC SHIELD

d000187hb



All Dimensions in inches

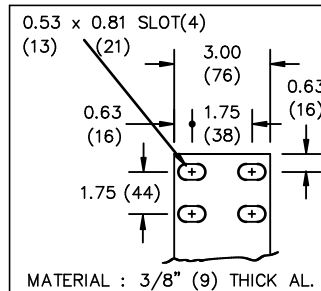
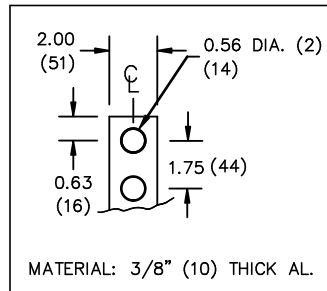
ENCLOSURE COLOR :ANSI 61 GREY – OUTDOOR

HV TERMINAL DETAIL

LV TERMINAL DETAIL

XO TERMINAL DETAIL

MECHANICAL TYPE LUGS INCLUDED
SUITABLE FOR 350MCM-6 CU/AL
CONDUCTORS
2 CONDUCTORS PER PHASE



CUSTOMER NOTES:

- HV TERMINATED AT TOP FRONT
- LV TERMINATED AT BOTTOM FRONT
- XO TERMINATED AT BOTTOM FRONT
- 200% RATED NEUTRAL PROVIDED



TITLE: 3PH DISTRIBUTION TRANSFORMER

DES:	PPICASSI
DATE:	23/03/16
SCALE:	NTS

NO.	DATE	BY	REVISION

SHEET 2 OF 3

EDBSK3A0225KB9S

ENCLOSURE BOTTOM VIEW



NOTE:
 WHEN BOTTOM CABLE ENTRY IS OPTED, THE SPACE USED FOR CONDUITS IN THE FRONT OF THE TRANSFORMER SHOULD NOT OBSTRUCT MORE THAN 50% OF THE FRONT AIR INTAKE AREA DEFINED BETWEEN THE BOTTOM PLATE AND THE SUPPORTING LEGS.
 SEE MANUAL FOR ADDITIONAL INFORMATION



TITLE: 3PH DISTRIBUTION TRANSFORMER
 ENCLOSURE BOTTOM VIEW

				DES: PPICASSI
				DATE: 23/03/16
NO.	DATE	BY	REVISION	SCALE: NTS

SHEET 3 OF 3

EDBSK3A0225KB9S