



TITLE: 3PH DISTRIBUTION TRANSFORMER
NAMEPLATE INFORMATION

DES:	AOPPER
DATE:	24/04/22
SCALE:	NTS

SHEET 1 OF 3

EDBSK3A0225KB9K

0.0 httpd 2026/06/12 20:30

THIS DRAWING CONTAINS STRICTLY CONFIDENTIAL INFORMATION BELONGING TO HAMMOND POWER SOLUTIONS AND MUST NOT BE DISTRIBUTED OUTSIDE AUTHORIZED PARTIES.

POWER SOLUTIONS

Hyderabad, IN Guelph, ONT Baraboo, WI Monterrey, MX

HPS Sentinel™ K

Energy Efficient Distribution Transformer

Transformateur de Distribution à Bon Rendement Énergétique

Part No. SK3A0225KB9K

LR 3902

DRY TYPE TRANSFORMER E112313

ALSO VERIFIED IN ACCORDANCE TO ENERGY STANDARD CRO22-18 BY UNDERWITERS LABORATORIES INC. 3106

LISTED

Cust. Ref. Ref. du Client	Serial No. No. de Serie	HV/HT	271A	VOLTS	CURRENT COURANT	% RATED VOLTAGE % NOMINALE	CONNECTION CONFIGURATION PAR PHASE
3	K	480V	10 kV	496	262	103.4	1
	ANN		H1 H2 H3	488	266	101.7	2
	225		LV/BT	472	275	100	3
	150 °C			464	280	96.6	4
	220 °C			456	285	94.9	5
	CU			447	290	93.2	6
	60						7
	3.2						
	3R						
	1660/753						

Winding Enroulement: CU

Frequency: 60

Impedance % @ 170°C: 3.2

Encl. Type / Type De Coffrage: 3R

Weight lbs/kg: 1660/753

Temp. Rise / Echauffement: 150 °C

Temp. Class / Classe Temp: 220 °C

Winding Enroulement: CU

Frequency: 60

Impedance % @ 170°C: 3.2

Encl. Type / Type De Coffrage: 3R

Weight lbs/kg: 1660/753

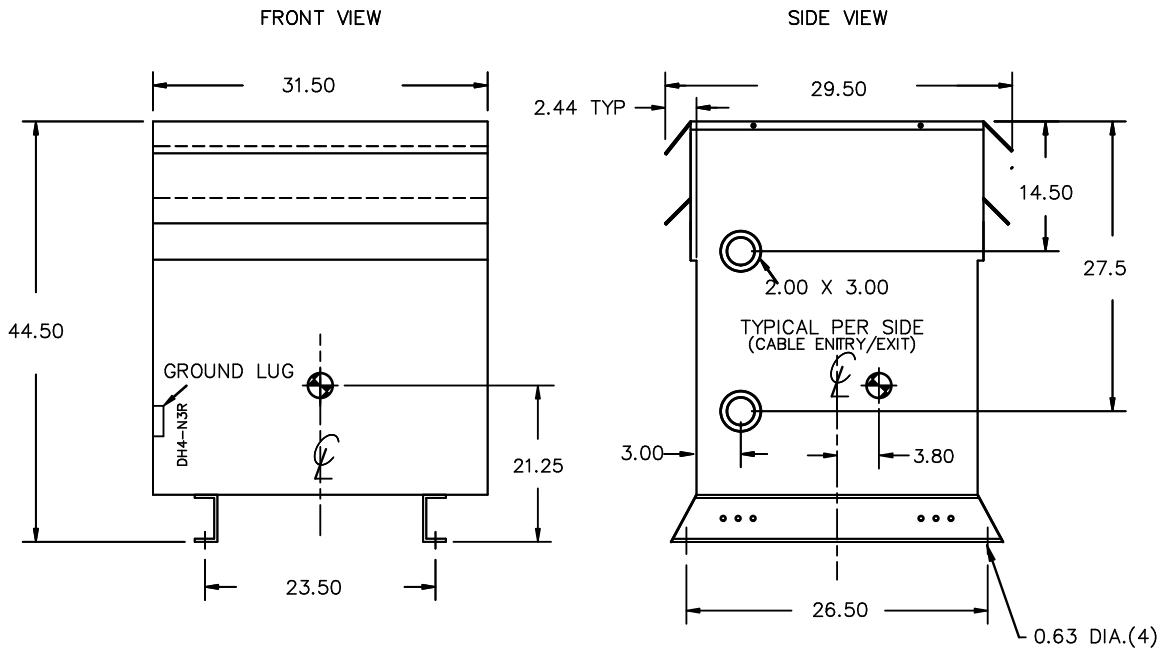
H1 H2 H3

X0 X1 X2 X3

SEISMIC QUALIFICATIONS:
AS FLOOR MOUNT ONLY
IBC 2018/ASCE 7-16
SDS<=2.0g Z/n=1 Ip=1.5

SPACINGS BETWEEN ANY VENTILATED ENCLOSURE PANEL AND ANY ADJACENT WALL SHALL BE A MINIMUM OF 5 INCHES ELECTROSTATIC SHIELD

d000187hb



All Dimensions in inches

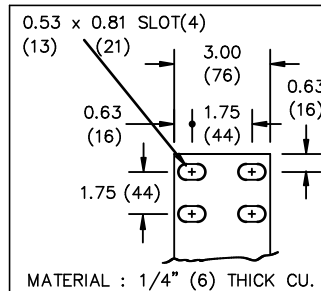
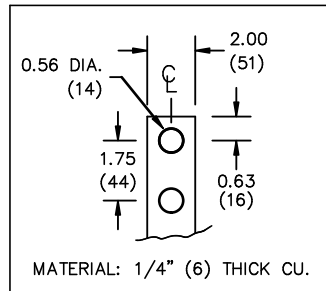
ENCLOSURE COLOR :ANSI 61 GREY – OUTDOOR

HV TERMINAL DETAIL

LV TERMINAL DETAIL

X0 TERMINAL DETAIL

MECHANICAL TYPE LUGS INCLUDED
SUITABLE FOR 350MCM-6 CU/AL
CONDUCTORS
2 CONDUCTORS PER PHASE



CUSTOMER NOTES:

- HV TERMINATED AT TOP FRONT
- LV TERMINATED AT BOTTOM FRONT
- X0 TERMINATED AT BOTTOM FRONT
- 200% RATED NEUTRAL PROVIDED



TITLE: 3PH DISTRIBUTION TRANSFORMER

DES:	AOPPER
DATE:	24/04/22
SCALE:	NTS

NO.	DATE	BY	REVISION

SHEET 2 OF 3

EDBSK3A0225KB9K



NOTE:
 WHEN BOTTOM CABLE ENTRY IS OPTED, THE SPACE USED FOR CONDUITS IN THE FRONT OF THE TRANSFORMER SHOULD NOT OBSTRUCT MORE THAN 50% OF THE FRONT AIR INTAKE AREA DEFINED BETWEEN THE BOTTOM PLATE AND THE SUPPORTING LEGS.
 SEE MANUAL FOR ADDITIONAL INFORMATION



TITLE: 3PH DISTRIBUTION TRANSFORMER
 ENCLOSURE BOTTOM VIEW

				DES: AOPPER
				DATE: 24/04/22
NO.	DATE	BY	REVISION	SCALE: NTS

SHEET 3 OF 3

EDBSK3A0225KB9K