



TITLE: 3PH DISTRIBUTION TRANSFORMER
NAMEPLATE INFORMATION

3	21/11/25	CS	NPL IMPEDANCE AND WEIGHT UPDATE	DES: RMOVVA
2	21/07/16	PP	EDB UPDATE	DATE: 18/06/12
NO.	DATE	BY	REVISION	SCALE: NTS

SHEET 1 OF 3

EDBSK3A0150PB9S

3.0 httpd 2026/04/03 13:10

THIS DRAWING CONTAINS STRICTLY CONFIDENTIAL INFORMATION BELONGING TO HAMMOND POWER SOLUTIONS AND MUST NOT BE DISTRIBUTED OUTSIDE AUTHORIZED PARTIES.

POWER SOLUTIONS
Guelph, ONT
Compton, CA
Hyderabad, IN

HPS Sentinel™ K
Energy Efficient Distribution Transformer
Transformateur de Distribution à Bon Rendement Énergétique
Baraboo, WI
Monterrey, MX
Part No. SK3A0150PB9S

LR 3902
DRY TYPE TRANSFORMER
E112313
ALSO VERIFIED IN ACCORDANCE TO ENERGY STANDARD CROZ 2-18 BY UNDERWriters LABORATORIES INC. 3106

LISTED

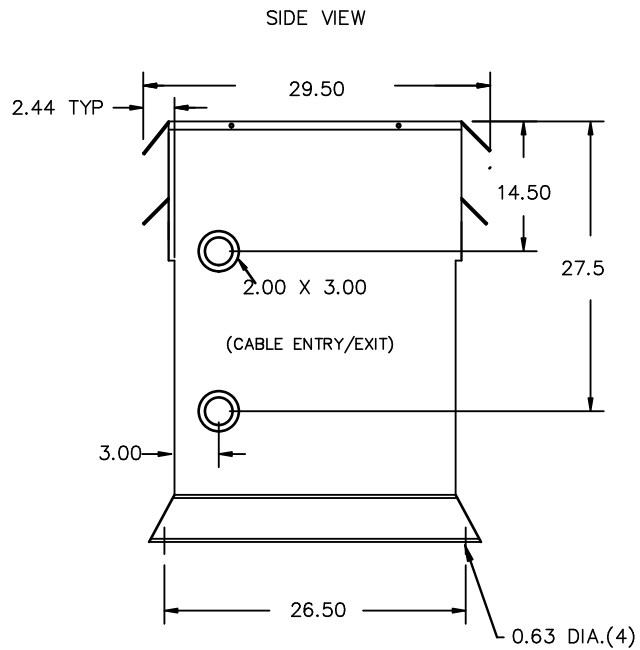
Cust. Ref.	Serial No.	HV/HT	10 kV	VOLTS	CURRENT	% RATED VOLTAGE	CONNECTION
Ref. du Client	No. de Serie	600V	10 kV	630	COURANT	% NOMINALE	PAR PHASE
Phase		144A	10 kV	615		102.5	1 2 3
Type	BIL		Term Bornes	600		100	4 5 6
Cooling	ANN		LV/BT	585		97.5	7
Refrondissement			208Y/120V	570		95	
kVA	150		416A	555		92.5	
Temp. Rise	150 °C		BIL	540		90	
Echauffement			Term Bornes				
Temp Class	220 °C						
Classe Temp							
Winding	AL						
Enroulement							
Frequency	60						
Frequency Hz							
Impedance %	3.9						
Impédance %							
Encl Type	3R						
Type De Coffrage							
Weight	1050						
Poids							

Diagram showing terminal connections: H1, H2, H3, X0, X1, X2, X3.

SEISMIC QUALIFICATIONS:
AS FLOOR MOUNT ONLY
IBC 2018/ASCE 7-16
SDS<=2.0g Z/n=1 Ip=1.5

SPACINGS BETWEEN ANY VENTILATED ENCLOSURE PANEL AND ANY ADJACENT WALL SHALL BE A MINIMUM OF 5 INCHES EXCEPT WHEN WALL MOUNTED USING APPROVED WALL MOUNTING KIT ELECTROSTATIC SHIELD

d000187hb



All Dimensions in inches

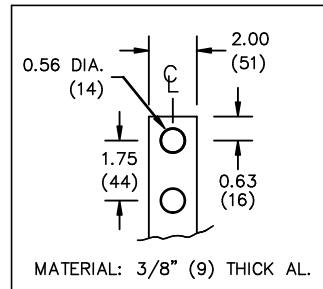
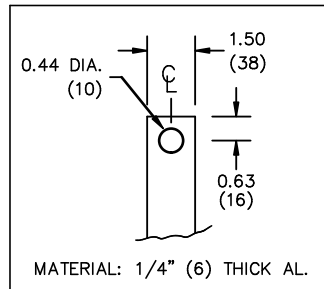
ENCLOSURE COLOR :ANSI 61 GREY – OUTDOOR

HV TERMINAL DETAIL

LV TERMINAL DETAIL

X0 TERMINAL DETAIL

MECHANICAL TYPE LUGS INCLUDED
SUITABLE FOR 250MCM-6 CU/AL
CONDUCTORS
1 CONDUCTOR PER PHASE



CUSTOMER NOTES:

- HV TERMINATED AT TOP FRONT
- LV TERMINATED AT BOTTOM FRONT
- X0 TERMINATED AT BOTTOM FRONT
- 200% RATED NEUTRAL PROVIDED



TITLE: 3PH DISTRIBUTION TRANSFORMER

3	21/11/25	CS	NPL IMPEDANCE AND WEIGHT UPDATE	DES: RMOVVA
2	21/07/16	PP	EDB UPDATE	DATE: 18/06/12
NO.	DATE	BY	REVISION	SCALE: NTS

SHEET 2 OF 3

EDBSK3A0150PB9S



NOTE:
 WHEN BOTTOM CABLE ENTRY IS OPTED, THE SPACE USED FOR CONDUITS IN THE FRONT OF THE TRANSFORMER SHOULD NOT OBSTRUCT MORE THAN 50% OF THE FRONT AIR INTAKE AREA DEFINED BETWEEN THE BOTTOM PLATE AND THE SUPPORTING LEGS.
 SEE MANUAL FOR ADDITIONAL INFORMATION



TITLE: 3PH DISTRIBUTION TRANSFORMER
ENCLOSURE BOTTOM VIEW

3	21/11/25	CS	NPL IMPEDANCE AND WEIGHT UPDATE	DES: RMOVVA
2	21/07/16	PP	EDB UPDATE	DATE: 18/06/12
NO.	DATE	BY	REVISION	SCALE: NTS

SHEET 3 OF 3

EDBSK3A0150PB9S