




TITLE:		3PH DISTRIBUTION TRANSFORMER	
		NAMEPLATE INFORMATION	
2	21/07/16	PP	EDB UPDATE
1	20/03/17	PP	SEISMIC UPDATE
NO.	DATE	BY	REVISION
			DES: RMOVVA
			DATE: 18/04/26
			SCALE: NTS

SHEET 1 OF 3
 EDBSK3A0150PB4K
 2.0 httpd 2026/04/04 22:34



POWER SOLUTIONS

Guelph, ONT Compton, CA
 Hyderabad, IN Compton, CA

hammond HPS Sentinel™ K

Energy Efficient Distribution Transformer

Transformateur de Distribution à Bon Rendement Énergétique

Baraboo, WI Monterrey, MX

Part No. SK3A0150PB4K

Serial No. []

HV/HT 600V 144A

BIL 10 kV

Term Bornes H1 H2 H3

LV/BT 208Y/120V 416A

BIL 10 kV

Term Bornes X0 X1 X2 X3

Energy Regulations DOE 10 CFR PART 431:2016

Reglements Energetique CEE ACT SOR/2018-201

Impedance % @ 170°C 3.8

Suitable for non-sinusoidal current load with K-factor not to exceed 4

Convient à des courants non-sinusoidaux avec facteur K n'excédant pas 4

Weight Poids 1100 lbs

Cust. Ref. []

Phase 3

Type K

Cooling Refroidissement ANN

kVA 150

Temp. Rise Echauffement 150 °C

Temp Class 220 °C

Winding Enroulement CU

Frequency Fréquence Hz 60

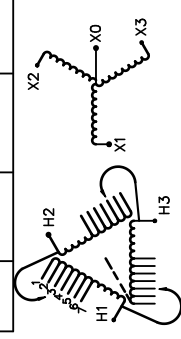
Impedance % @ 170°C 3.8

Encl Type Type De Coffrage 3R

Weight Poids 1100 lbs

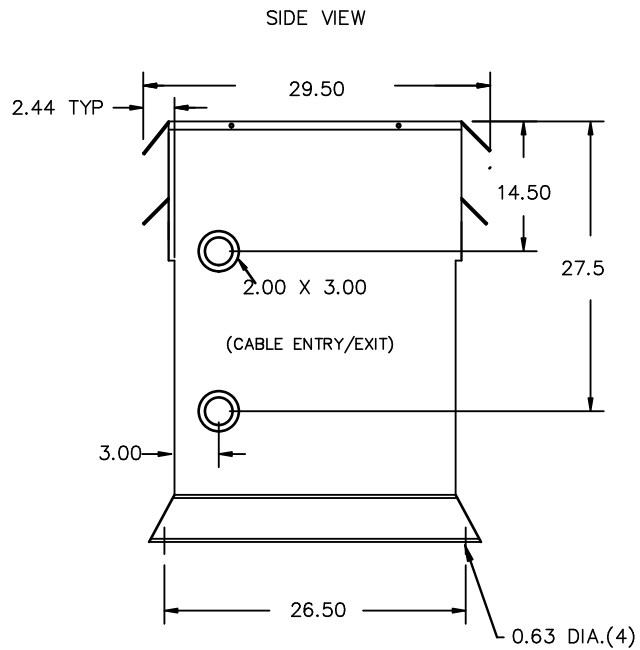
VOLTS	CURRENT COURANT	% RATED VOLTAGE % NOMINALE	CONNECTION CONNECTION PAR PHASE
630	137	105	1
615	141	102.5	2
600	144	100	3
585	148	97.5	4
570	152	95	5
555	156	92.5	6
540	160	90	7

SPACINGS BETWEEN ANY VENTILATED ENCLOSURE PANEL AND ANY ADJACENT WALL SHALL BE A MINIMUM OF 5 INCHES EXCEPT WHEN WALL MOUNTED USING APPROVED WALL MOUNTING KIT ELECTROSTATIC SHIELD



SEISMIC QUALIFICATIONS:
 XS FLOOR MOUNT ONLY
 IBC 2018/ASCE 7-16
 SDS<=2.0g Z/n=1 Ip=1.5

d000187hb



All Dimensions in inches

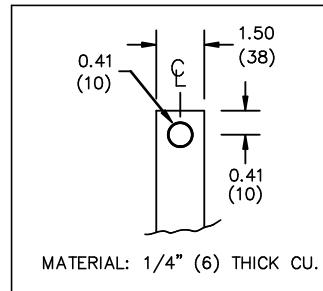
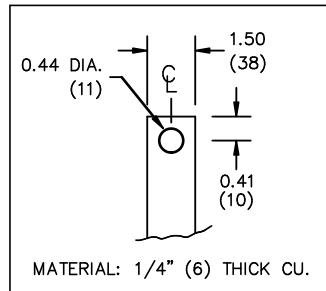
ENCLOSURE COLOR :ANSI 61 GREY – OUTDOOR

HV TERMINAL DETAIL

LV TERMINAL DETAIL

X0 TERMINAL DETAIL

MECHANICAL TYPE LUGS INCLUDED
SUITABLE FOR 250MCM-6 CU/AL
CONDUCTORS
1 CONDUCTOR PER PHASE



CUSTOMER NOTES:

- HV TERMINATED AT TOP FRONT
- LV TERMINATED AT BOTTOM FRONT
- X0 TERMINATED AT BOTTOM FRONT
- 200% RATED NEUTRAL PROVIDED



TITLE: 3PH DISTRIBUTION TRANSFORMER

2	21/07/16	PP	EDB UPDATE	DES: RMOVVA
1	20/03/17	PP	SEISMIC UPDATE	DATE: 18/04/26
NO.	DATE	BY	REVISION	SCALE: NTS

SHEET 2 OF 3

EDBSK3A0150PB4K



NOTE:
 WHEN BOTTOM CABLE ENTRY IS OPTED, THE SPACE USED FOR CONDUITS IN THE FRONT OF THE TRANSFORMER SHOULD NOT OBSTRUCT MORE THAN 50% OF THE FRONT AIR INTAKE AREA DEFINED BETWEEN THE BOTTOM PLATE AND THE SUPPORTING LEGS.
 SEE MANUAL FOR ADDITIONAL INFORMATION



TITLE: 3PH DISTRIBUTION TRANSFORMER
 ENCLOSURE BOTTOM VIEW

2	21/07/16	PP	EDB UPDATE	DES: RMOVVA
1	20/03/17	PP	SEISMIC UPDATE	DATE: 18/04/26
NO.	DATE	BY	REVISION	SCALE: NTS

SHEET 3 OF 3

EDBSK3A0150PB4K