



TITLE: 3PH DISTRIBUTION TRANSFORMER NAMEPLATE INFORMATION			
3	21/07/16	PP	EDB UPDATE
2	20/03/17	PP	SEISMIC UPDATE
NO.	DATE	BY	REVISION
			DES: JWEN
			DATE: 15/11/17
			SCALE: NTS

SHEET 1 OF 3  
EDBSK3A0150PB3K

**POWER SOLUTIONS**  
Guelph, ONT Compton, CA  
Hyderabad, IN

**HPS Sentinel™ K**  
Energy Efficient Distribution Transformer  
Transformateur de Distribution à Bon Rendement Énergétique

LR 3902  
DRY TYPE TRANSFORMER E112313  
ALSO VERIFIED IN ACCORDANCE TO ENERGY STANDARD CROZ2-18 BY UNDERWRIERS LABORATORIES INC. 3106

Part No. SK3A0150PB3K

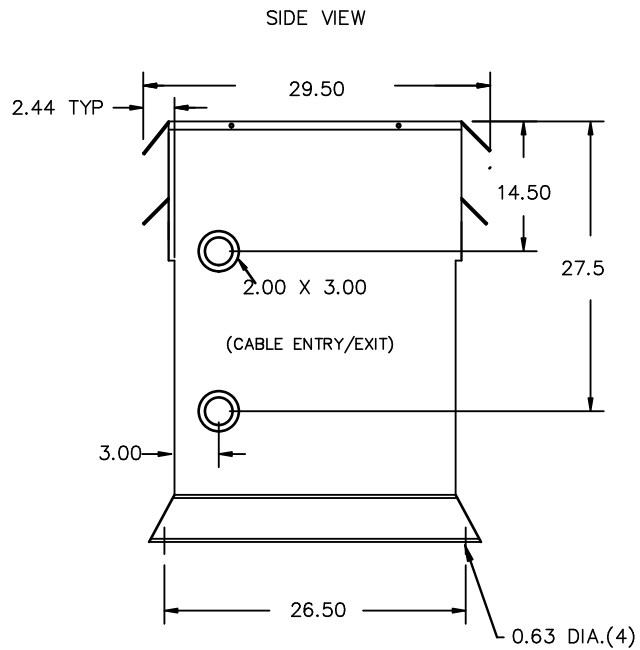
Cust. Ref.	Serial No.	HV/HT	VOLTS	CURRENT COURANT	% RATED VOLTAGE % NOMINALE	CONNECTION CONNECTION PAR PHASE
3	K	600V	630	137	105	1
Type	BIL	10 kV	615	141	102.5	2
Cooling Refroidissement	ANN	H1 H2 H3	600	144	100	3
kVA	150	LV/BT	585	148	97.5	4
Temp. Rise Echauffement	150 °C	BIL	570	152	95	5
Temp Class	220 °C	Term Bornes	540	156	92.5	6
Winding Enroulement	CU	DOE 10 CFR PART 431:2016		160	90	7
Frequency	60	CEE ACT SOR/2018-201				
Impedance % @ 170 °C	3.5	Suitable for non-sinusoidal current load with K-factor not to exceed 13				
Encl Type Type De Coffrage	3R	Convient à des courants non-sinusoidaux avec facteur K n'excédant pas				
Weight Poids	1100					

Diagram showing terminals H1, H2, H3, X0, X1, X2, X3.

SEISMIC QUALIFICATIONS:  
AS FLOOR MOUNT ONLY  
IBC 2018/ASCE 7-16  
SDS<=2.0g Z/n=1 Ip=1.5

SPACINGS BETWEEN ANY VENTILATED ENCLOSURE PANEL AND ANY ADJACENT WALL SHALL BE A MINIMUM OF 5 INCHES EXCEPT WHEN WALL MOUNTED USING APPROVED WALL MOUNTING KIT ELECTROSTATIC SHIELD

d000187hb



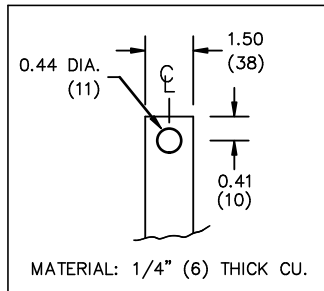
All Dimensions in inches

ENCLOSURE COLOR :ANSI 61 GREY – OUTDOOR

H.V.1. TERMINAL DETAIL

L.V.1. TERMINAL DETAIL

MECHANICAL TYPE LUGS INCLUDED  
SUITABLE FOR 250MCM-6 CU/AL  
CONDUCTORS  
1 CONDUCTOR PER PHASE



CUSTOMER NOTES:

- HV1 TERMINATED AT TOP FRONT
- LV1 TERMINATED AT BOTTOM FRONT



TITLE: 3PH DISTRIBUTION TRANSFORMER

3	21/07/16	PP	EDB UPDATE	DES: JWEN
2	20/03/17	PP	SEISMIC UPDATE	DATE: 15/11/17
NO.	DATE	BY	REVISION	SCALE: NTS

SHEET 2 OF 3

EDBSK3A0150PB3K



NOTE:  
 WHEN BOTTOM CABLE ENTRY IS OPTED, THE SPACE USED FOR CONDUITS IN THE FRONT OF THE TRANSFORMER SHOULD NOT OBSTRUCT MORE THAN 50% OF THE FRONT AIR INTAKE AREA DEFINED BETWEEN THE BOTTOM PLATE AND THE SUPPORTING LEGS.  
 SEE MANUAL FOR ADDITIONAL INFORMATION



TITLE: 3PH DISTRIBUTION TRANSFORMER  
 ENCLOSURE BOTTOM VIEW

3	21/07/16	PP	EDB UPDATE	DES: JWEN
2	20/03/17	PP	SEISMIC UPDATE	DATE: 15/11/17
NO.	DATE	BY	REVISION	SCALE: NTS

SHEET 3 OF 3

EDBSK3A0150PB3K