



TITLE: 3PH DISTRIBUTION TRANSFORMER
NAMEPLATE INFORMATION

NO.	DATE	BY	REVISION	DES: RHARISH
				DATE: 24/03/05
				SCALE: NTS

SHEET 1 OF 3

EDBSK3A0112KK9K

0.1 httpd 2026/05/24 12:15

THIS DRAWING CONTAINS STRICTLY CONFIDENTIAL INFORMATION BELONGING TO HAMMOND POWER SOLUTIONS AND MUST NOT BE DISTRIBUTED OUTSIDE AUTHORIZED PARTIES.

POWER SOLUTIONS

Guelph, ONT Compton, CA Hyderabad, IN

HPS Sentinel™ K

Energy Efficient Distribution Transformer

Transformateur de Distribution à Bon Rendement Énergétique

Baraboo, WI Monterrey, MX

Part No. SK3A0112KK9K

LR 3902

DRY TYPE TRANSFORMER E112313

ALSO VERIFIED IN ACCORDANCE TO ENERGY STANDARD CROZ-18 BY UNDERWRIERS LABORATORIES INC. © 316

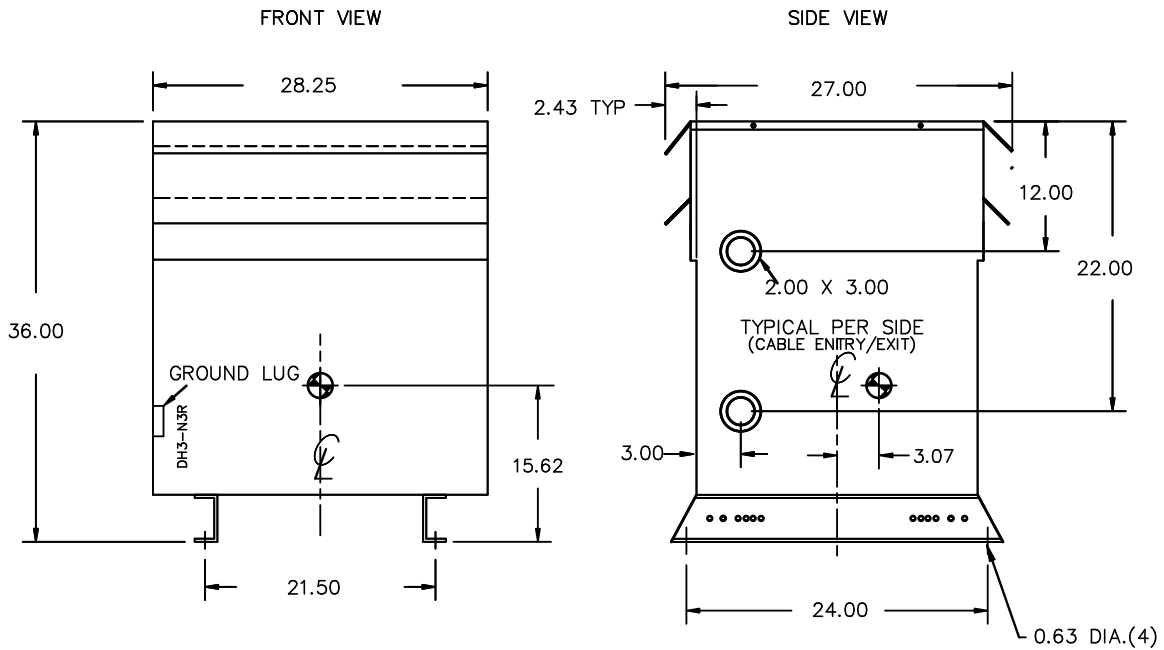
LISTED

Cust. Ref.	Serial No.	HV/HT	135A	VOLTS	CURRENT COURANT	% RATED VOLTAGE % NOMINALE	CONNECTION CONNECTION PAR PHASE
Ref. du Client	No. de Serie			504	129	105	1
Phase		BIL	10 kV	492	132	102.5	2
Type		Term Bornes	H1 H2 H3	480	135	100	3
Cooling Refroidissement		LV/BT	480Y/277V 135A	468	139	97.5	4
kVA		BIL	10 kV	456	142	95	5
Temp. Rise Echauffement	150 °C	Term Bornes	X0 X1 X2 X3	444	146	92.5	6
Temp Class	220 °C	Energy Regulations	DOE 10 CFR PART 431:2016	432	150	90	7
Winding Enroulement	CU	Reglements Energetique	CEE ACT SOR/2018-201				
Frequency	60	Suitable for non-sinusoidal current load with K-factor not to exceed 9					
Impedance % @ 170 °C	4.5	Convient à des courants non-sinusoidaux avec facteur K n'excédant pas					
Encl Type Type De Coffrage	3R						
Weight lbs/kg Poids	830/377						

Diagram showing terminal connections H1, H2, H3, X0, X1, X2, X3.

SEISMIC QUALIFICATIONS:
X0 FLOOR MOUNT ONLY
IBC 2018/ASCE 7-16
SDS<=2.0g Z/n=1 Ip=1.5

d000187hb



All Dimensions in inches

ENCLOSURE COLOR :ANSI 61 GREY – OUTDOOR

HV TERMINAL DETAIL

LV TERMINAL DETAIL

X0 TERMINAL DETAIL

MECHANICAL TYPE LUGS INCLUDED
SUITABLE FOR 250MCM-6 CU/AL
CONDUCTORS
1 CONDUCTOR PER PHASE

MECHANICAL TYPE LUGS INCLUDED
SUITABLE FOR 250MCM-6 CU/AL
CONDUCTORS
1 CONDUCTOR PER PHASE

MECHANICAL TYPE LUGS INCLUDED
SUITABLE FOR 600MCM-2 CU/AL
CONDUCTORS
1 CONDUCTOR PER PHASE

CUSTOMER NOTES:

- HV TERMINATED AT TOP FRONT
- LV TERMINATED AT BOTTOM FRONT
- X0 TERMINATED AT BOTTOM FRONT
- 200% RATED NEUTRAL PROVIDED



TITLE: 3PH DISTRIBUTION TRANSFORMER

DES:	RHARISH
DATE:	24/03/05
SCALE:	NTS

NO.	DATE	BY	REVISION

SHEET 2 OF 3

EDBSK3A0112KK9K

ENCLOSURE BOTTOM VIEW



NOTE:
 WHEN BOTTOM CABLE ENTRY IS OPTED, THE SPACE USED FOR CONDUITS IN THE FRONT OF THE TRANSFORMER SHOULD NOT OBSTRUCT MORE THAN 50% OF THE FRONT AIR INTAKE AREA DEFINED BETWEEN THE BOTTOM PLATE AND THE SUPPORTING LEGS.
 SEE MANUAL FOR ADDITIONAL INFORMATION



TITLE: 3PH DISTRIBUTION TRANSFORMER
 ENCLOSURE BOTTOM VIEW

				DES: RHARISH
				DATE: 24/03/05
NO.	DATE	BY	REVISION	SCALE: NTS

SHEET 3 OF 3

EDBSK3A0112KK9K