



TITLE: 3PH DISTRIBUTION TRANSFORMER NAMEPLATE INFORMATION			
3	21/07/16	PP	EDB UPDATE
2	20/03/17	PP	SEISMIC UPDATE
NO.	DATE	BY	REVISION
			DES: JWEN
			DATE: 15/11/17
			SCALE: NTS

SHEET 1 OF 3  
EDBSK3A0112KB4K  
3.0 httpd 2026/04/02 11:02

**POWER SOLUTIONS**  
Guelph, ONT  
Compton, CA  
Hyderabad, IN

**HPS Sentinel™ K**  
Energy Efficient Distribution Transformer  
Transformateur de Distribution à Bon Rendement Énergétique

Baraboo, WI  
Monterrey, MX

Part No. SK3A0112KB4K

LR 3902  
DRY TYPE TRANSFORMER E112313  
ALSO VERIFIED IN ACCORDANCE TO ENERGY STANDARD CRO22-18 BY UNDERWRIERS LABORATORIES INC. © 316

**LISTED**

Cust. Ref. Ref. du Client	Serial No. No. de Serie	HV/HT	BIL	Term Bornes	LV/BT	BIL	Term Bornes	Energy Regulations Règlements Énergétique	Suitable for non-sinusoidal current load with K-factor not to exceed 4 Convient à des courants non-sinusoidaux avec facteur K n'excédant pas 4
3	K	480V	10 kV	H1 H2 H3	208Y/120V	150 °C	220 °C	CU	DOE 10 CFR PART 431:2016
Type	Cooling Refroidissement	kVA	Temp. Rise Échauffement	Temp Class	Winding Enroulement	Frequency Fréquence Hz	Impedance % @ 170 °C	Encl Type Type De Coffrage	Weight Poids lbs
K	ANN	112.5	150 °C	220 °C	CU	60	3.6	3R	800

VOLTS	CURRENT COURANT	% RATED VOLTAGE % NOMINALE	CONNECTION CONFIGURATION PAR PHASE
504	129	105	1
492	132	102.5	2
480	135	100	3
468	139	97.5	4
456	142	95	5
444	146	92.5	6
432	150	90	7

SPACINGS BETWEEN ANY VENTILATED ENCLOSURE PANEL AND ANY ADJACENT WALL SHALL BE A MINIMUM OF 5 INCHES EXCEPT WHEN WALL MOUNTED USING APPROVED WALL MOUNTING KIT ELECTROSTATIC SHIELD

SEISMIC QUALIFICATIONS:  
XS FLOOR MOUNT ONLY  
IBC 2018/ASCE 7-16  
SDS<=2.0g Z/n=1 Ip=1.5

d000187hb



All Dimensions in inches

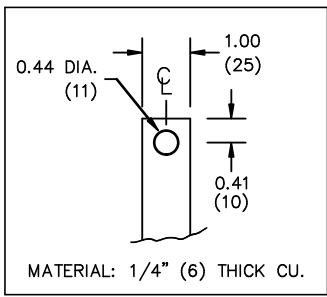


ENCLOSURE COLOR :ANSI 61 GREY – OUTDOOR

H.V.1. TERMINAL DETAIL

L.V.1. TERMINAL DETAIL

MECHANICAL TYPE LUGS INCLUDED  
SUITABLE FOR 250MCM-6 CU/AL  
CONDUCTORS  
1 CONDUCTOR PER PHASE



MATERIAL: 1/4" (6) THICK CU.

CUSTOMER NOTES:

- HV1 TERMINATED AT TOP FRONT
- LV1 TERMINATED AT BOTTOM FRONT



TITLE:		3PH DISTRIBUTION TRANSFORMER		
3	21/07/16	PP	EDB UPDATE	DES: JWEN
2	20/03/17	PP	SEISMIC UPDATE	DATE: 15/11/17
NO.	DATE	BY	REVISION	SCALE: NTS

SHEET 2 OF 3  
EDBSK3A0112KB4K

ENCLOSURE BOTTOM VIEW



NOTE:  
 WHEN BOTTOM CABLE ENTRY IS OPTED, THE SPACE USED FOR CONDUITS IN THE FRONT OF THE TRANSFORMER SHOULD NOT OBSTRUCT MORE THAN 50% OF THE FRONT AIR INTAKE AREA DEFINED BETWEEN THE BOTTOM PLATE AND THE SUPPORTING LEGS.  
 SEE MANUAL FOR ADDITIONAL INFORMATION



TITLE: 3PH DISTRIBUTION TRANSFORMER  
 ENCLOSURE BOTTOM VIEW

3	21/07/16	PP	EDB UPDATE	DES: JWEN
2	20/03/17	PP	SEISMIC UPDATE	DATE: 15/11/17
NO.	DATE	BY	REVISION	SCALE: NTS

SHEET 3 OF 3

EDBSK3A0112KB4K