


- IMPEDANCE SHOWN IS CALCULATED VALUE - NOT GUARANTEED

d000190hb



hammond
POWER SOLUTIONS

Guelph, ONT Compton, CA
Hyderabad, IN

HPS Sentinel™ H
DRY TYPE HARMONIC MITIGATING TRANSFORMER
TRANSFORMATEUR À SEC POUR MITIGATION D'HARMONIQUES

Baraboo, WI
Monterrey, MX

Part No. SH3T0300PB3K

Serial No. [] No. de Serie []

Model [3] HV/HT [600V]

Term Bornes [ANN H1 H2 H3]

LV/BT [300 208Z/120V]

Temp. Rise Echauffement [150 °C] Term Bornes [X1 X2 X3]

Classe Temp [220 °C] Neutral [X0(200%)]

Winding Enroulement [CU] Energy Regulations [DOE 10 CFR PART 431:2016]

Frequency [60] Reglements [CEE ACT SOR/2018-201]

Impedance % [5.3] Energetique [1.5 MAX]

Encl Type [3R] Number of Secondaries []

Type De Coffrage []

Weight lbs/kg [2350/1066]

VOLTS	CURRENT COURANT	% RATED VOLTAGE / % TENSION NOMINALE	CONNECTION CONNECTION PAR PHASE
630	275	105	1-2
615	282	102.5	2-3
600	289	100	3-4
585	296	97.5	4-5
570	304	95	5-6
555	312	92.5	6-7
540	321	90	7-8

SEISMIC QUALIFICATIONS:
AS FLOOR MOUNT ONLY
IBC 2018/ASCE 7-16
SDS<=2.0g Z/n=0 Ip=1.5

SPACINGS BETWEEN ANY VENTILATED ENCLOSURE PANEL AND ANY ADJACENT WALL SHALL BE A MINIMUM OF 5 INCHES EXCEPT WHEN WALL MOUNTED USING APPROVED WALL MOUNTING KIT ELECTROSTATIC SHIELD

LISTED

DRY TYPE TRANSFORMER 8 03423 13541 6
ALSO VERIFIED IN ACCORDANCE TO ENERGY STANDARD C802.2-18 BY UNDERWRIERS LABORATORIES INC. 316



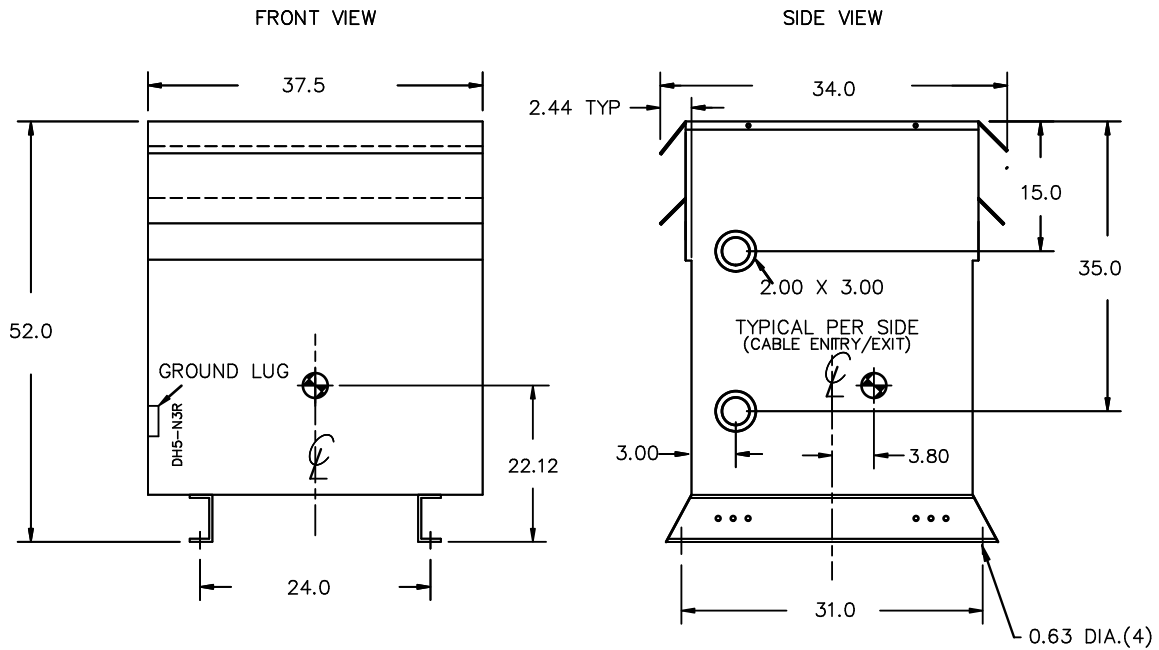
TITLE: 3PH DISTRIBUTION TRANSFORMER NAMEPLATE INFORMATION				
1	23/03/16	LC	CHANGED NPL VER:	DES: LCEN
NO.	DATE	BY	REVISION	SCALE: NTS

SHEET 1 OF 3

EDBSH3T0300PB3K

1.0 httpd 2026/06/14 21:01

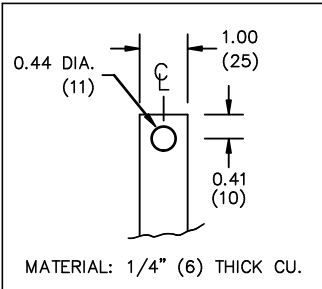
THIS DRAWING CONTAINS STRICTLY CONFIDENTIAL INFORMATION BELONGING TO HAMMOND POWER SOLUTIONS AND MUST NOT BE DISTRIBUTED OUTSIDE AUTHORIZED PARTIES.



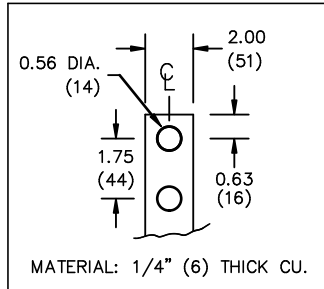
All Dimensions in inches

ENCLOSURE COLOR :ANSI 61 GREY – OUTDOOR

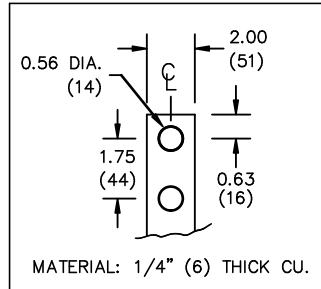
HV TERMINAL DETAIL



LV TERMINAL DETAIL



XO TERMINAL DETAIL



CUSTOMER NOTES:

- HV TERMINATED AT TOP FRONT
- LV TERMINATED AT BOTTOM FRONT
- XO TERMINATED AT BOTTOM FRONT
- 200% RATED NEUTRAL
- XO C/W 2 PADS (DIVIDE CABLES EVENLY AMONG BOTH)



TITLE: 3PH DISTRIBUTION TRANSFORMER

1	23/03/16	LC	CHANGED NPL VER:	DES: LCEN
NO.	DATE	BY	REVISION	SCALE: NTS

SHEET 2 OF 3

EDRSH310300PB3K

ENCLOSURE BOTTOM VIEW



NOTE:
 WHEN BOTTOM CABLE ENTRY IS OPTED, THE SPACE USED FOR CONDUITS IN THE FRONT OF THE TRANSFORMER SHOULD NOT OBSTRUCT MORE THAN 50% OF THE FRONT AIR INTAKE AREA DEFINED BETWEEN THE BOTTOM PLATE AND THE SUPPORTING LEGS.
 SEE MANUAL FOR ADDITIONAL INFORMATION



TITLE: 3PH DISTRIBUTION TRANSFORMER
 ENCLOSURE BOTTOM VIEW

1	23/03/16	LC	CHANGED NPL VER:	DES: LCEN
NO.	DATE	BY	REVISION	SCALE: NTS

SHEET 3 OF 3

EDBSH310300PB3K