


- IMPEDANCE SHOWN IS CALCULATED VALUE

d000190hb



POWER SOLUTIONS

Guelph, ONT Compton, CA
Hyderabad, IN

hammond HPS Sentinel™ H

DRY TYPE HARMONIC MITIGATING TRANSFORMER

TRANSFORMATEUR À SEC POUR MITIGATION D'HARMONIQUES

Part No. SH3T0225KB3S

Serial No. [] No. de Serie []

Model [3] HV/HT [480V]

Term Bornes [H1 H2 H3]

LV/BT [208Z/120V]

Temp. Rise [150 °C] Term Bornes [X1 X2 X3]

Classe Temp [220 °C] Neutral [X0(200%)]

Energy Regulations [AL] DOE 10 CFR PART 431:2016

Frequency [60] Reglements Energetique [CEE ACT SOR/2018-201]

Impedance % [5.3] Z₀ [1.0 MAX]

Encl Type [3R] Number of Secondaries []

Weight lbs [1900]

DRY TYPE TRANSFORMER 8 03423 13485 3

ALSO VERIFIED IN ACCORDANCE TO ENERGY STANDARD C802.2-18 BY UNDERWITERS LABORATORIES INC. 316

LISTED

SPACINGS BETWEEN ANY VENTILATED ENCLOSURE PANEL AND ANY ADJACENT WALL SHALL BE A MINIMUM OF 5 INCHES EXCEPT WHEN WALL MOUNTED USING APPROVED WALL MOUNTING KIT ELECTROSTATIC SHIELD

VOLTS	CURRENT COURANT	% RATED VOLTAGE % NOMINALE	CONNECTION CONNECTION PAR PHASE
506	258	105	1
492	264	102.5	2
480	271	100	3
465	278	97.5	4
456	285	95	5
444	293	92.5	6
430	301	90	7

H1 H2 H3

X1 X2 X3 X0

SENTINEL H

ANGULAR DISPLACEMENT 0°

SEISMIC QUALIFICATIONS:
AS FLOOR MOUNT ONLY
IBC 2018/ASCE 7-16
SDS<=2.0g Z/n=0 Ip=1.5

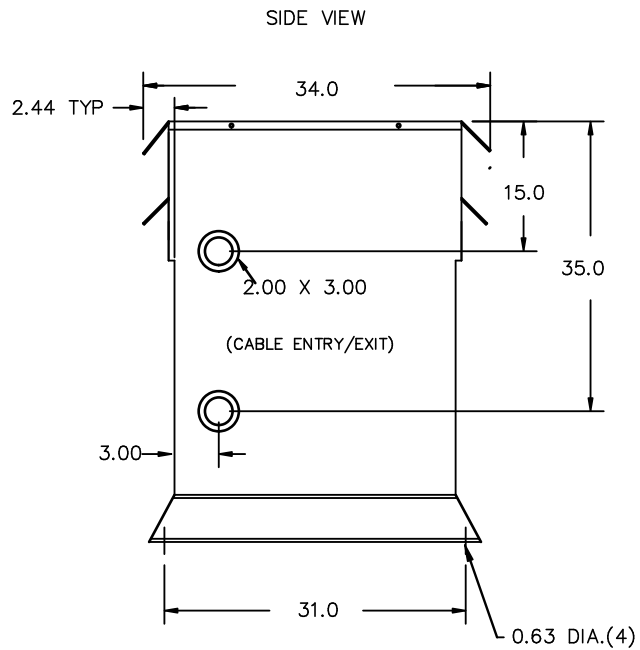


TITLE: 3PH HARMONIC MITIGATING TRANSFORMER NAMEPLATE INFORMATION

3	21/07/16	PP	EDB UPDATE	DES: LCEN
2	20/03/17	PP	SEISMIC UPDATE	DATE: 16/05/02
NO.	DATE	BY	REVISION	SCALE: NTS

SHEET 1 OF 3

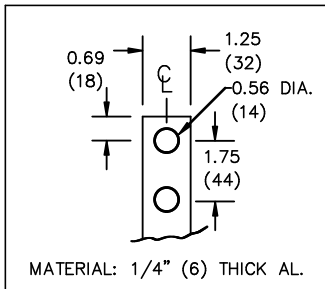
EDBSH3T0225KB3S



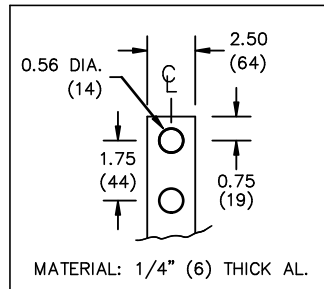
All Dimensions in inches

ENCLOSURE COLOR :ANSI 61 GREY – OUTDOOR

H.V.1. TERMINAL DETAIL



L.V.1. TERMINAL DETAIL



CUSTOMER NOTES:

- HV1 TERMINATED AT BOTTOM FRONT
- LV1 TERMINATED AT TOP FRONT
- 200% RATED NEUTRAL, TERMINATED AT TOP FRONT



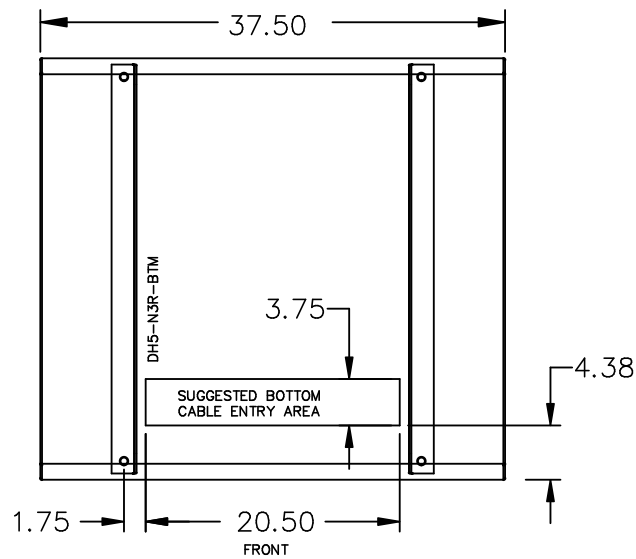
TITLE: 3PH HARMONIC MITIGATING TRANSFORMER
MECHANICAL INFORMATION

3	21/07/16	PP	EDB UPDATE	DES: LCEN
2	20/03/17	PP	SEISMIC UPDATE	DATE: 16/05/02
NO.	DATE	BY	REVISION	SCALE: NTS

SHEET 2 OF 3

EDBSH310225KB35

ENCLOSURE BOTTOM VIEW



NOTE:
 WHEN BOTTOM CABLE ENTRY IS OPTED, THE SPACE USED FOR CONDUITS IN THE FRONT OF THE TRANSFORMER SHOULD NOT OBSTRUCT MORE THAN 50% OF THE FRONT AIR INTAKE AREA DEFINED BETWEEN THE BOTTOM PLATE AND THE SUPPORTING LEGS.
 SEE MANUAL FOR ADDITIONAL INFORMATION



TITLE: 3PH HARMONIC MITIGATING TRANSFORMER
 ENCLOSURE BOTTOM VIEW

3	21/07/16	PP	EDB UPDATE	DES: LCEN
2	20/03/17	PP	SEISMIC UPDATE	DATE: 16/05/02
NO.	DATE	BY	REVISION	SCALE: NTS

SHEET 3 OF 3

EDBSH310225KB35