




TITLE: 3PH DISTRIBUTION TRANSFORMER
NAMEPLATE INFORMATION

1	21/07/16	PP	EDB UPDATE	DES: CSHAH
NO.	DATE	BY	REVISION	SCALE: NTS

SHEET 1 OF 3

EDB3H3T0150PB3S

1.0 httpd 2026/04/04 16:34



POWER SOLUTIONS
Guelph, ONT Compton, CA
Hyderabad, IN

hammond HPS Sentinel™ H
DRY TYPE HARMONIC MITIGATING TRANSFORMER
TRANSFORMATEUR À SEC POUR MITIGATION D'HARMONIQUES
Baraboo, WI Monterrey, MX
Part No. SH3T0150PB3S

Cust. Ref. [] Serial No. []
Ref. du Client [] No. de Serie []


Phase 3 Model []
Type K HV/HT 600V
Cooling ANN Term Bornes H1 H2 H3
kVA 150 LV/BT 208Z/120V
Temp. Rise 150 °C Term Bornes X1 X2 X3
Echauffement []
Temp Class 220 °C Neutral XO (200% RATED)
Classe Temp []
Winding AL Energy Regulations DOE 10 CFR PART 431:2016
Enroulement []
Frequency 60 Reglements CEE ACT SOR/2018-201
Fréquence Hz []
Impedance % 3.9 Z₀ 0.95 MAX
@ 170 °C
Encl Type 3R Number of Secondaries []
Type De Coffrage []
Weight lbs 1350
Poids []

VOLTS	CURRENT COURANT	% RATED VOLTAGE / % NOMINALE	CONNECTION FOR CONNECTION PAR PHASE
630	137	105	1
615	141	102.5	2
600	144	100	3
585	148	97.5	4
570	152	95	5
555	156	92.5	6
540	160	90	7

SEISMIC QUALIFICATIONS:
AS FLOOR MOUNT ONLY
IBC 2018/ASCE 7-16
SDS<=2.0g Z/n=1 Ip=1.5

SPACINGS BETWEEN ANY VENTILATED ENCLOSURE PANEL AND ANY ADJACENT WALL SHALL BE A MINIMUM OF 5 INCHES EXCEPT WHEN WALL MOUNTED USING APPROVED WALL MOUNTING KIT ELECTROSTATIC SHIELD

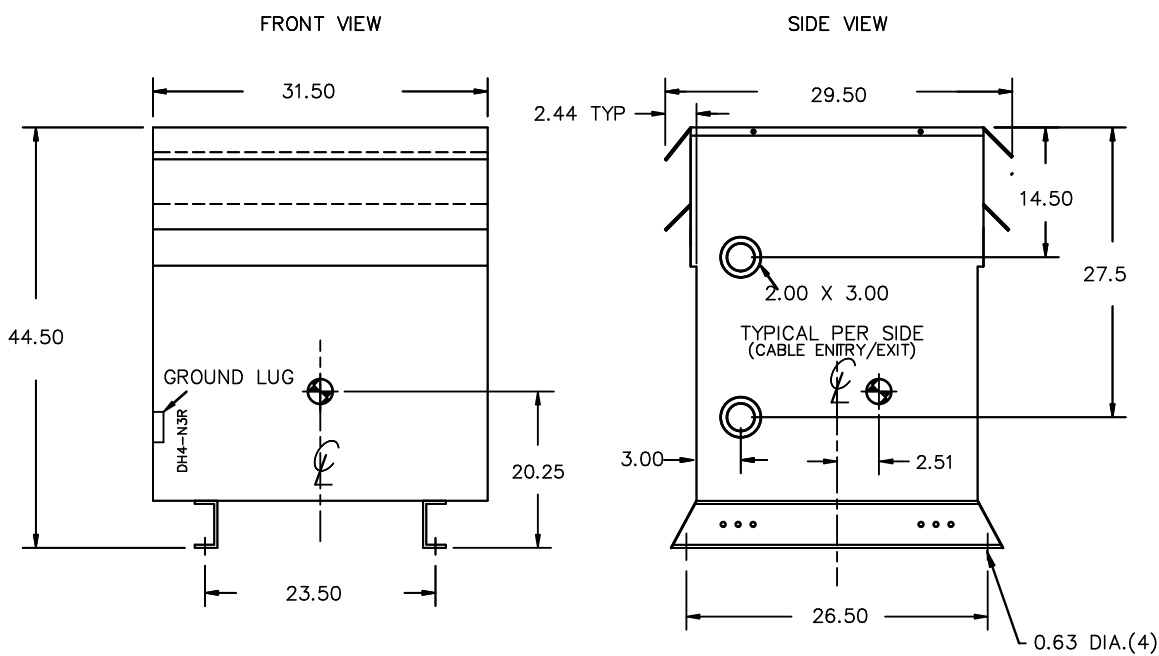
LISTED



DRY TYPE TRANSFORMER 8 03423 13495 2
ALSO VERIFIED IN ACCORDANCE TO ENERGY STANDARD CROZ 2-18 BY UNDERWITERS LABORATORIES INC. 316

d000190hb

THIS DRAWING CONTAINS STRICTLY CONFIDENTIAL INFORMATION BELONGING TO HAMMOND POWER SOLUTIONS AND MUST NOT BE DISTRIBUTED OUTSIDE AUTHORIZED PARTIES.



All Dimensions in inches

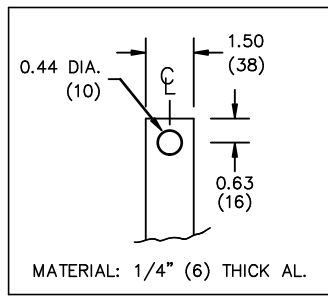
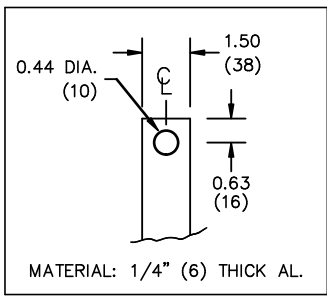
ENCLOSURE COLOR :ANSI 61 GREY – OUTDOOR

HV TERMINAL DETAIL

LV TERMINAL DETAIL

XO TERMINAL DETAIL

MECHANICAL TYPE LUGS INCLUDED
SUITABLE FOR 250MCM-6 CU/AL
CONDUCTORS
1 CONDUCTOR PER PHASE



CUSTOMER NOTES:

- HV TERMINATED AT TOP FRONT
- LV TERMINATED AT BOTTOM FRONT
- XO TERMINATED AT BOTTOM FRONT
- 200% RATED NEUTRAL
- C/W 2 XO PADS (DIVIDE CABLES EVENLY AMONG BOTH)



TITLE: 3PH DISTRIBUTION TRANSFORMER				
1	21/07/16	PP	EDB UPDATE	DES: CSHAH
NO.	DATE	BY	REVISION	SCALE: NTS

SHEET 2 OF 3
EDBSH310150PB3S
1.0 httpd 2026/04/04 16:34



NOTE:
 WHEN BOTTOM CABLE ENTRY IS OPTED, THE SPACE USED FOR CONDUITS IN THE FRONT OF THE TRANSFORMER SHOULD NOT OBSTRUCT MORE THAN 50% OF THE FRONT AIR INTAKE AREA DEFINED BETWEEN THE BOTTOM PLATE AND THE SUPPORTING LEGS.
 SEE MANUAL FOR ADDITIONAL INFORMATION



TITLE: 3PH DISTRIBUTION TRANSFORMER
 ENCLOSURE BOTTOM VIEW

1	21/07/16	PP	EDB UPDATE	DES: CSHAH
NO.	DATE	BY	REVISION	SCALE: NTS

SHEET 3 OF 3

EDBSH310150PB3S