



TITLE: 3PH DISTRIBUTION TRANSFORMER
NAMEPLATE INFORMATION


2	21/07/16	PP	EDB UPDATE	DES: LCEN
1	20/03/17	PP	SEISMIC UPDATE	DATE: 17/01/05
NO.	DATE	BY	REVISION	SCALE: NTS

SHEET 1 OF 3

EDB SH310045PB3K

2.0 httpd 2026/05/19 23:35

THIS DRAWING CONTAINS STRICTLY CONFIDENTIAL INFORMATION BELONGING TO HAMMOND POWER SOLUTIONS AND MUST NOT BE DISTRIBUTED OUTSIDE AUTHORIZED PARTIES.



hammond
POWER SOLUTIONS

Guelph, ONT Compton, CA
Hyderabad, IN Compton, CA Monterrey, MX

HPS Sentinel™ H
DRY TYPE HARMONIC MITIGATING TRANSFORMER
TRANSFORMATEUR À SEC POUR MITIGATION D'HARMONIQUES

Part No. SH310045PB3K


Serial No. [] No. de Serie []
 Model [] HV/HT []
 Term Bornes [] H1 H2 H3
 LV/BT [] 208Z/120V
 Term Bornes [] X1 X2 X3
 Neutral [] X0(200%)
 Energy Regulations [] DOE 10 CFR PART 431:2016
 Reglements Energetique [] CEE ACT SOR/2018-201
 Impedance % [] 3.4
 Z₀ [] 0.95 MAX
 Number of Secondaries [] 3R
 Weight Poids [] 465 lbs

VOLTS	CURRENT COURANT	% RATED VOLTAGE /% TENSION NOMINALE	CONNECTIONS CONNECTIONS PAR PHASE
630	41.2	105	1
615	42.2	102.5	2
600	43.3	100	3
585	44.4	97.5	4
570	45.6	95	5
555	46.8	92.5	6
540	48.1	90	7

SEISMIC QUALIFICATIONS:
 GSP-0136/IBC 2018/ASCE 7-16
 SDS<=2.0g Z/h=1 Ip=1.5

SPACINGS BETWEEN ANY VENTILATED ENCLOSURE PANEL AND ANY ADJACENT WALL SHALL BE A MINIMUM OF 3 INCHES ELECTROSTATIC SHIELD

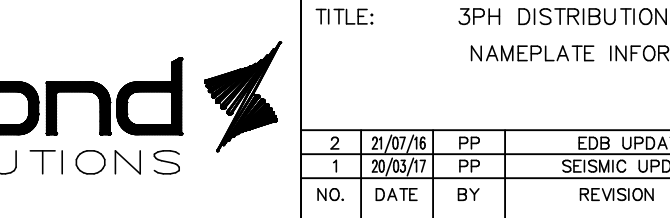
LISTED



LR 3902

DRY TYPE TRANSFORMER 8 03423 13536 2
 ALSO VERIFIED IN ACCORDANCE TO ENERGY STANDARD CROZ-18 BY UNDERMETERS LABORATORIES INC. 316

0000190hb





All Dimensions in inches

ENCLOSURE COLOR : ANSI 61 GREY – OUTDOOR

HV TERMINAL DETAIL

LV TERMINAL DETAIL

X0 TERMINAL DETAIL

MECHANICAL TYPE LUGS INCLUDED
SUITABLE FOR #14-2 CU/AL
CONDUCTORS
1 CONDUCTOR PER PHASE

MECHANICAL TYPE LUGS INCLUDED
SUITABLE FOR 250MCM-6 CU/AL
CONDUCTORS
1 CONDUCTOR PER PHASE

MECHANICAL TYPE LUGS INCLUDED
SUITABLE FOR 250MCM-6 CU/AL
CONDUCTORS
2 CONDUCTORS PER PHASE

CUSTOMER NOTES:

- HV TERMINATED AT BOTTOM FRONT
- LV TERMINATED AT TOP FRONT
- X0 TERMINATED AT TOP FRONT
- 200% RATED NEUTRAL PROVIDED



TITLE: 3PH DISTRIBUTION TRANSFORMER

2	21/07/16	PP	EDB UPDATE	DES: LCEN
1	20/03/17	PP	SEISMIC UPDATE	DATE: 17/01/05
NO.	DATE	BY	REVISION	SCALE: NTS

SHEET 2 OF 3

EDBSH310045PB3K

ENCLOSURE BOTTOM VIEW



NOTE:
 WHEN BOTTOM CABLE ENTRY IS OPTED, THE SPACE USED FOR CONDUITS IN THE FRONT OF THE TRANSFORMER SHOULD NOT OBSTRUCT MORE THAN 50% OF THE FRONT AIR INTAKE AREA DEFINED BETWEEN THE BOTTOM PLATE AND THE SUPPORTING LEGS.
 SEE MANUAL FOR ADDITIONAL INFORMATION



TITLE: 3PH DISTRIBUTION TRANSFORMER
 ENCLOSURE BOTTOM VIEW

2	21/07/16	PP	EDB UPDATE	DES: LCEN
1	20/03/17	PP	SEISMIC UPDATE	DATE: 17/01/05
NO.	DATE	BY	REVISION	SCALE: NTS

SHEET 3 OF 3

EDB SH310045PB3K