




TITLE: 3PH DISTRIBUTION TRANSFORMER  
NAMEPLATE INFORMATION

NO.	DATE	BY	REVISION	SCALE:
3	21/07/16	PP	EDB UPDATE	NTS
2	20/03/17	PP	SEISMIC UPDATE	NTS

SHEET 1 OF 3

EDB SG3A0225KY

3.0 httpd 2026/04/02 05:29




**POWER SOLUTIONS**  
Guelph, ONT  
Hyderabad, IN Compton, CA

**HPS Sentinel™ G**  
Energy Efficient Distribution Transformer  
Transformateur de Distribution à Bon Rendement Énergétique

Baraboo, WI  
Monterrey, MX

Part No. **SG3A0225KY**

LR 3902  
DRY TYPE  
TRANSFORMER  
77US  
E112313



LISTED

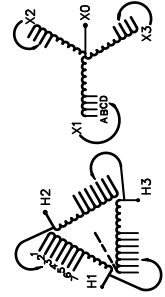
8 03423112799 2  
ALSO REFER TO CATALOGUE  
TO ENERGY STANDARDS C900-18  
BY UNDERWRITERS LABORATORIES INC. 0148

Cust. Ref. Ref. du Client		Serial No. No. de Serie	VOLTS		CURRENT COURANT		% RATED % TENSION NOMINALE		CONNECTION EACH PHASE CONNECTION PAR PHASE	
3		HV/HT	480V		258		105		1	
K		BIL	10 kV		264		102.5		2	
ANN		Term Bornes	H1 H2 H3		271		100		3	
225		LV/BT	400Y/231V		278		97.5		4	
150 °C		BIL	10 kV		285		95		5	
220 °C		Term Bornes	X0 X1 X2 X3		293		92.5		6	
AL		Energy Regulations	DOE 10 CFR PART 431:2016		301		90		7	
60		Reglements de Énergétique	CEE ACT SOR/2018-201		302				A	
6.6		Impedance % @ 170 °C			312				B	
3R		Encl. Type Type de Coffrage			325				C	
1400		Weight Poids			342				D	

SPACINGS BETWEEN ANY VENTILATED ENCLOSURE PANEL AND ANY ADJACENT WALL SHALL BE A MINIMUM OF 5 INCHES EXCEPT WHEN WALL MOUNTED USING APPROVED WALL MOUNTING KIT

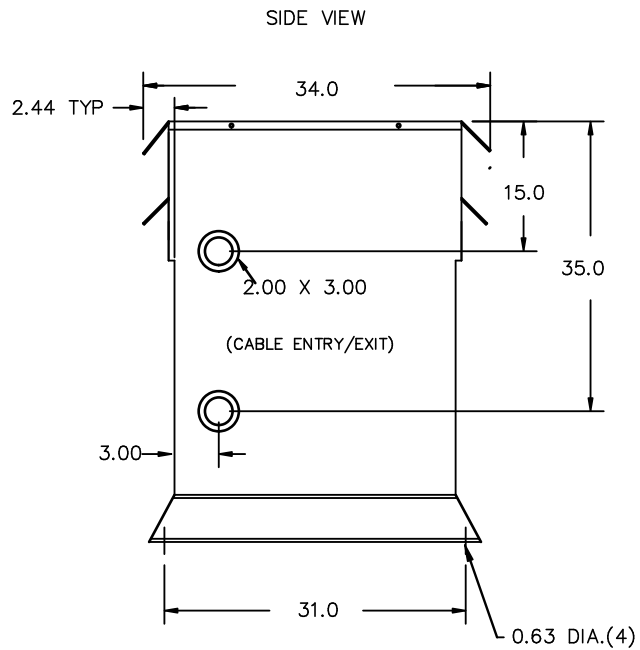
ONLY ONE TAP IN USE AT A TIME  
RATIO ERROR +/- 1.15 % ON SOME TAPS

SEISMIC QUALIFICATIONS:  
AS FLOOR MOUNT ONLY  
IBC 2018/ASCE 7-16  
SDS<=2.0g Z/h=0 Ip=1.5



THIS DRAWING CONTAINS STRICTLY CONFIDENTIAL INFORMATION BELONGING TO HAMMOND POWER SOLUTIONS AND MUST NOT BE DISTRIBUTED OUTSIDE AUTHORIZED PARTIES.

d000186hb



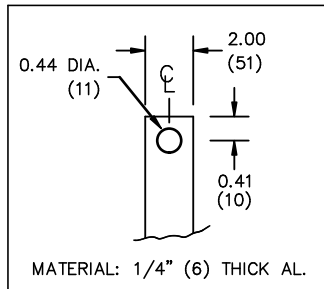
All Dimensions in inches

ENCLOSURE COLOR :ANSI 61 GREY – OUTDOOR

H.V.1. TERMINAL DETAIL

L.V.1. TERMINAL DETAIL

MECHANICAL TYPE LUGS INCLUDED  
SUITABLE FOR 350MCM-6 CU/AL  
CONDUCTORS  
2 CONDUCTORS PER PHASE



CUSTOMER NOTES:

- HV1 TERMINATED AT TOP FRONT
- LV1 TERMINATED AT BOTTOM FRONT
- X0 TOP FRONT, TAPS A,B,C,D (X1 X2 X3) BOTTOM FRONT



TITLE: 3PH DISTRIBUTION TRANSFORMER

3	21/07/16	PP	EDB UPDATE	DES: RBHATIA
2	20/03/17	PP	SEISMIC UPDATE	DATE: 16/06/15
NO.	DATE	BY	REVISION	SCALE: NTS

SHEET 2 OF 3

EDBSC3A0225KY

ENCLOSURE BOTTOM VIEW



NOTE:  
 WHEN BOTTOM CABLE ENTRY IS OPTED, THE SPACE USED FOR CONDUITS IN THE FRONT OF THE TRANSFORMER SHOULD NOT OBSTRUCT MORE THAN 50% OF THE FRONT AIR INTAKE AREA DEFINED BETWEEN THE BOTTOM PLATE AND THE SUPPORTING LEGS.  
 SEE MANUAL FOR ADDITIONAL INFORMATION



TITLE: 3PH DISTRIBUTION TRANSFORMER  
 ENCLOSURE BOTTOM VIEW

3	21/07/16	PP	EDB UPDATE	DES: RBHATIA
2	20/03/17	PP	SEISMIC UPDATE	DATE: 16/06/15
NO.	DATE	BY	REVISION	SCALE: NTS

SHEET 3 OF 3

EDBSC3A0225KY