



TITLE: 3PH DISTRIBUTION TRANSFORMER  
NAMEPLATE INFORMATION

NO.	DATE	BY	REVISION
4	25/01/27	AO	C OF G ADDED
3	21/07/16	PP	EDB UPDATE
			DES: JWEN
			DATE: 15/11/09
			SCALE: NTS

SHEET 1 OF 3

EDBSG3A0112PB0C

4.0 httpd 2026/04/07 00:16

**POWER SOLUTIONS**  
Guelph, ONT  
Hyderabad, IN Compton, CA

**HPS Sentinel™ G**  
Energy Efficient Distribution Transformer  
Transformateur de Distribution à Bon Rendement Énergétique

Baraboo, WI  
Monterrey, MX

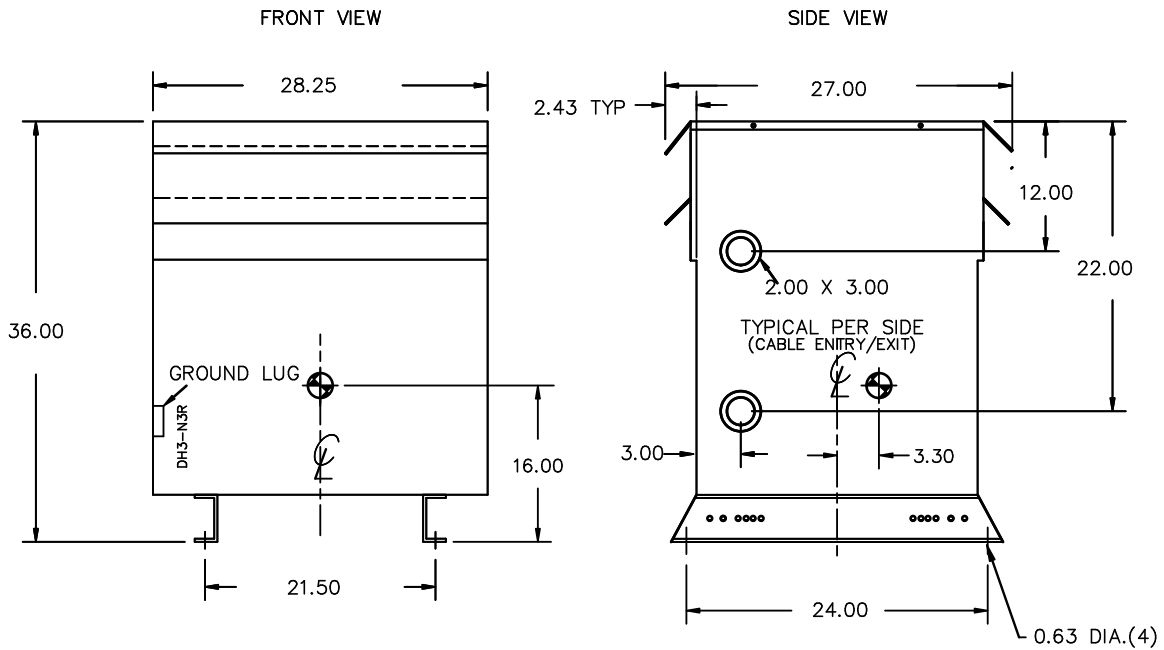
Part No. **SG3A0112PB0C**

**LISTED** **LR 3902**  
 DRY TYPE TRANSFORMER 80034231125714  
 ALSO SEE LISTING AND APPROVALS  
 BY UNDERWRITERS LABORATORIES INC. @ 316

Cust. Ref. Ref. du Client		Serial No. No. de Serie	VOLTS		CURRENT COURANT	% RATED % TENSION NOMINALE	CONNECTION EACH PHASE CONNECTION PAR PHASE
Phase	3	HV/HT	630	103.1	105	1	
Type	K	BIL	615	105.6	102.5	2	
Cooling Refroidissement	ANN	Term Bornes	600	108.3	100	3	
kVA	112.5	LV/BT	585	111	97.5	4	
Temp. Rise Échauffement	150 °C	BIL	570	114	95	5	
Temp Class Classe Temp	220 °C	Term Bornes	555	117	92.5	6	
Winding Enroulement	CU	Energy Regulations de Énergétique	540	120	90	7	
Frequency Fréquence Hz	60	DOE 10 CFR PART 431:2016					
Impedance % @ 170 °C	4.1	CEE ACT SOR/2018-201					
Encl. Type Type de Coffrage	3R						
Weight Poids	780/354						

SPACINGS BETWEEN ANY VENTILATED ENCLOSURE PANEL AND ANY ADJACENT WALL SHALL BE A MINIMUM OF 5 INCHES EXCEPT WHEN WALL MOUNTED USING APPROVED WALL MOUNTING KIT

SEISMIC QUALIFICATIONS:  
AS FLOOR MOUNT ONLY  
IBC 2018/ASCE 7-16  
SDS<=2.0g Z/h=1 Ip=1.5



All Dimensions in inches

ENCLOSURE COLOR :ANSI 61 GREY – OUTDOOR

HV TERMINAL DETAIL

LV TERMINAL DETAIL

MECHANICAL TYPE LUGS INCLUDED  
SUITABLE FOR 250MCM-6 CU/AL  
CONDUCTORS  
1 CONDUCTOR PER PHASE

MECHANICAL TYPE LUGS INCLUDED  
SUITABLE FOR 350MCM-6 CU/AL  
CONDUCTORS  
2 CONDUCTORS PER PHASE

CUSTOMER NOTES:

- HV TERMINATED AT TOP FRONT
- LV TERMINATED AT BOTTOM FRONT



TITLE: 3PH DISTRIBUTION TRANSFORMER

4	25/01/27	AO	C OF G ADDED	DES: JWEN
3	21/07/16	PP	EDB UPDATE	DATE: 15/11/09
NO.	DATE	BY	REVISION	SCALE: NTS

SHEET 2 OF 3

EDBSG3A0112PBOC

ENCLOSURE BOTTOM VIEW



NOTE:  
 WHEN BOTTOM CABLE ENTRY IS OPTED, THE SPACE USED FOR CONDUITS IN THE FRONT OF THE TRANSFORMER SHOULD NOT OBSTRUCT MORE THAN 50% OF THE FRONT AIR INTAKE AREA DEFINED BETWEEN THE BOTTOM PLATE AND THE SUPPORTING LEGS.  
 SEE MANUAL FOR ADDITIONAL INFORMATION



TITLE: 3PH DISTRIBUTION TRANSFORMER  
 ENCLOSURE BOTTOM VIEW

4	25/01/27	AO	C OF G ADDED	DES: JWEN
3	21/07/16	PP	EDB UPDATE	DATE: 15/11/09
NO.	DATE	BY	REVISION	SCALE: NTS

SHEET 3 OF 3

EDBSG3A0112PBOC