




TITLE: 3PH DISTRIBUTION TRANSFORMER  
NAMEPLATE INFORMATION

|     |          |    |                |
|-----|----------|----|----------------|
| NO. | DATE     | BY | REVISION       |
| 3   | 21/07/16 | PP | EDB UPDATE     |
| 2   | 20/03/17 | PP | SEISMIC UPDATE |
|     |          |    | DES: JWEN      |
|     |          |    | DATE: 15/11/09 |
|     |          |    | SCALE: NTS     |

SHEET 1 OF 3

EDB SG3A0112KB

3.0 httpd 2026/04/02 18:51



**POWER SOLUTIONS**  
Guelph, ONT  
Hyderabad, IN Compton, CA

**HPS Sentinel™ G**  
Energy Efficient Distribution Transformer  
Transformateur de Distribution à Bon Rendement Énergétique

Baraboo, WI  
Monterrey, MX

Part No. SG3A0112KB

**LISTED**

UL E112313  
UL 77US  
UL 77US

DRY TYPE TRANSFORMER  
800 0342311236111

ALSO SEE ENERGY EFFICIENT TRANSFORMER STANDARDS CRO2015-18  
BY UNDERWRITERS LABORATORIES INC. @ 3148

LR 3902

Serial No. [ ]  
No. de Serie [ ]

Phase 3 HV/HT 480V 135A

Type K BIL 10 kV

Cooling Refroidissement ANN Term Bornes H1 H2 H3

kVA 112.5 LV/BT 208Y/120V 312A

Temp. Rise Echauffement 150 °C BIL 10 kV

Temp Class Classe Temp 220 °C Term Bornes X0 X1 X2 X3

Winding Enroulement AL Energy Regulations DOE 10 CFR PART 431:2016

Frequency Fréquence Hz 60 Reglements de l'Energétique CEE ACT SOR/2018-201

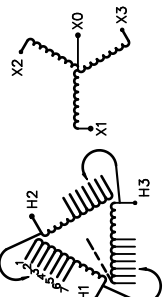
Impedance % @ 170 °C 5.6

Encl. Type Type de Coffrage 3R

Weight Poids lbs 710

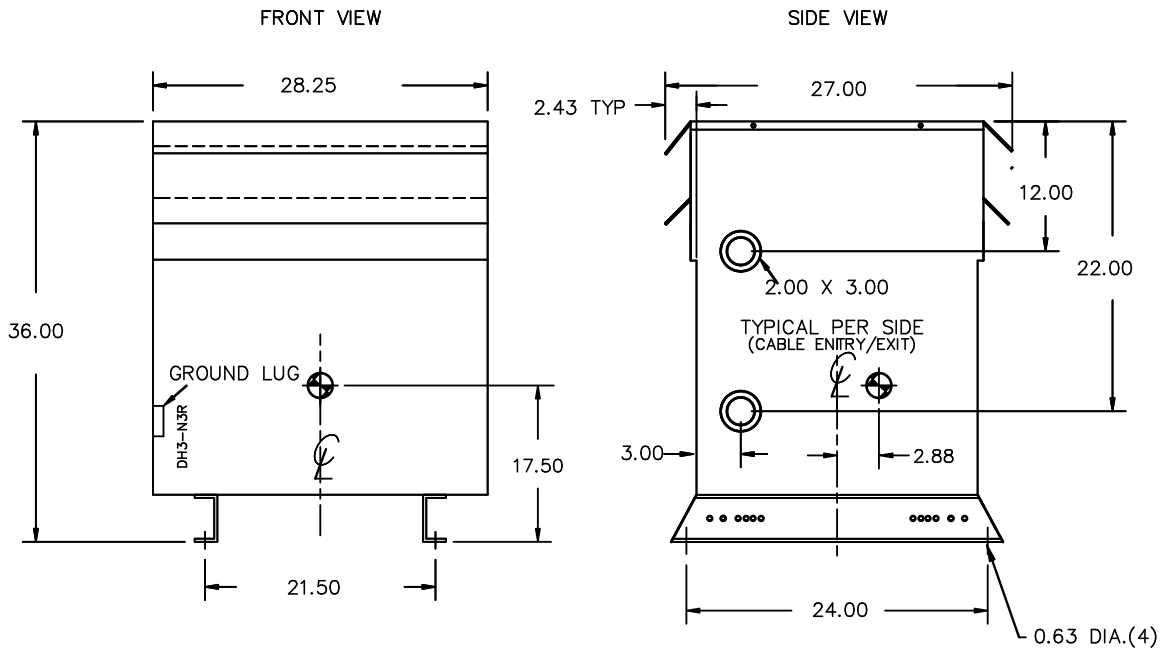
| VOLTS | CURRENT<br>COURANT | % RATED<br>% TENSION<br>NOMINALE | CONNECTION<br>EACH PHASE<br>CONNECTION<br>PAR PHASE |
|-------|--------------------|----------------------------------|---|
| 504   | 129                | 105                              | 1   |
| 482   | 132                | 102.5                            | 2   |
| 480   | 135                | 100                              | 3   |
| 468   | 139                | 97.5                             | 4   |
| 456   | 142                | 95                               | 5   |
| 444   | 146                | 92.5                             | 6   |
| 432   | 150                | 90                               | 7   |

SPACINGS BETWEEN ANY VENTILATED ENCLOSURE PANEL AND ANY ADJACENT WALL SHALL BE A MINIMUM OF 5 INCHES EXCEPT WHEN WALL MOUNTED USING APPROVED WALL MOUNTING KIT



SEISMIC QUALIFICATIONS:  
AS FLOOR MOUNT ONLY  
IBC 2018/ASCE 7-16  
SDS<=2.0g Z/h=1 Ip=1.5

d000186hb



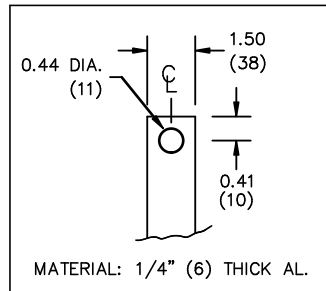
All Dimensions in inches

ENCLOSURE COLOR :ANSI 61 GREY – OUTDOOR

HV TERMINAL DETAIL

LV TERMINAL DETAIL

MECHANICAL TYPE LUGS INCLUDED  
SUITABLE FOR 250MCM-6 CU/AL  
CONDUCTORS  
1 CONDUCTOR PER PHASE



CUSTOMER NOTES:

- HV TERMINATED AT TOP FRONT
- LV TERMINATED AT BOTTOM FRONT



TITLE: 3PH DISTRIBUTION TRANSFORMER

|     |          |    |                |                |
|-----|----------|----|----------------|----------------|
| 3   | 21/07/16 | PP | EDB UPDATE     | DES: JWEN      |
| 2   | 20/03/17 | PP | SEISMIC UPDATE | DATE: 15/11/09 |
| NO. | DATE     | BY | REVISION       | SCALE: NTS     |

SHEET 2 OF 3

EDBSC3A0112KB

ENCLOSURE BOTTOM VIEW



NOTE:  
 WHEN BOTTOM CABLE ENTRY IS OPTED, THE SPACE USED FOR CONDUITS IN THE FRONT OF THE TRANSFORMER SHOULD NOT OBSTRUCT MORE THAN 50% OF THE FRONT AIR INTAKE AREA DEFINED BETWEEN THE BOTTOM PLATE AND THE SUPPORTING LEGS.  
 SEE MANUAL FOR ADDITIONAL INFORMATION



TITLE: 3PH DISTRIBUTION TRANSFORMER  
 ENCLOSURE BOTTOM VIEW

| NO. | DATE     | BY | REVISION       | SCALE:         |
|-----|----------|----|----------------|----------------|
| 3   | 21/07/16 | PP | EDB UPDATE     | DES: JWEN      |
| 2   | 20/03/17 | PP | SEISMIC UPDATE | DATE: 15/11/09 |
|     |          |    |                | SCALE: NTS     |

SHEET 3 OF 3

EDBSC3A0112KB