




TITLE: 3PH DISTRIBUTION TRANSFORMER  
NAMEPLATE INFORMATION

|     |          |    |                |
|-----|----------|----|----------------|
| NO. | DATE     | BY | REVISION       |
| 3   | 21/07/16 | PP | EDB UPDATE     |
| 2   | 20/03/17 | PP | SEISMIC UPDATE |
|     |          |    | DES: JWEN      |
|     |          |    | DATE: 15/11/09 |
|     |          |    | SCALE: NTS     |

SHEET 1 OF 3

EDB3G3A0075KK

3.0 httpd 2026/04/04 21:06



**POWER SOLUTIONS**  
Guelph, ONT  
Hyderabad, IN Compton, CA

**HPS Sentinel™ G**  
Energy Efficient Distribution Transformer  
Transformateur de Distribution à Bon Rendement Énergétique

Baraboo, WI  
Monterrey, MX

Part No. **SG3A0075KK**

Serial No. [ ]  
No. de Serie [ ]

Phase **3**

Type **K**

Cooling Refroidissement **ANN**

kVA **75**

Temp. Rise Echauffement **150 °C**

Temp Class Classe Temp **220 °C**

Winding Enroulement **AL**

Frequency Fréquence Hz **60**

Impedance % @ 170 °C **4.1**

Encl. Type Type de Coffrage **3R**

Weight Poids **575** lbs

HV/HT **480V**

BIL **10 kV**

Term Bornes **H1 H2 H3**

LV/BT **480Y/277V 90.2A**

BIL **10 kV**

Term Bornes **X0 X1 X2 X3**

Energy Regulations Règlement de l'Énergétique **DOE 10 CFR PART 431:2016**

CEE ACT SOR/2018-201

Customer Reference [ ]

Serial No. [ ]

Phase [ ]

Type [ ]

Cooling Refroidissement [ ]

kVA [ ]

Temp. Rise Echauffement [ ]

Temp Class Classe Temp [ ]

Winding Enroulement [ ]

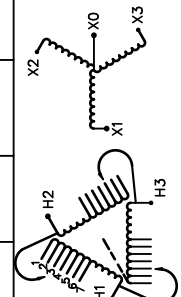
Frequency Fréquence Hz [ ]

Impedance % @ 170 °C [ ]

Encl. Type Type de Coffrage [ ]

Weight Poids [ ] lbs

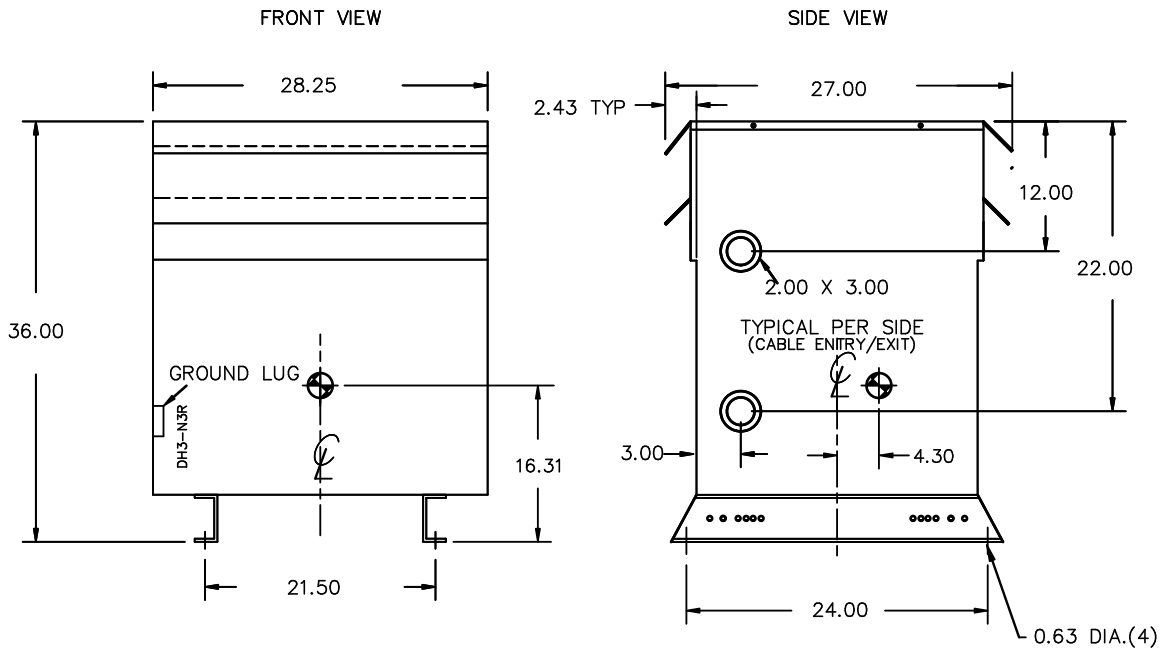
| VOLTS | CURRENT COURANT | % RATED VOLTAGE % TENSION NOMINALE | CONNECTION EACH PHASE CONNECTION PAR PHASE |
|-------|-----------------|------------------------------------|--|
| 504   | 85.9            | 105                                | 1  |
| 480   | 88.0            | 102.5                              | 2  |
| 468   | 90.2            | 100                                | 3  |
| 456   | 92.5            | 97.5                               | 4  |
| 444   | 95.0            | 95                                 | 5  |
| 432   | 97.5            | 92.5                               | 6  |
|       | 100.2           | 90                                 | 7  |



SEISMIC QUALIFICATIONS:  
AS FLOOR MOUNT ONLY  
IBC 2018/ASCE 7-16  
SDS<=2.0g Z/h=1 Ip=1.5

SPACINGS BETWEEN ANY VENTILATED ENCLOSURE PANEL AND ANY ADJACENT WALL SHALL BE A MINIMUM OF 3 INCHES

0000186hb



All Dimensions in inches

ENCLOSURE COLOR :ANSI 61 GREY – OUTDOOR

H.V.1. TERMINAL DETAIL

L.V.1. TERMINAL DETAIL

MECHANICAL TYPE LUGS INCLUDED  
SUITABLE FOR #2/0-14 CU/AL  
CONDUCTORS  
1 CONDUCTOR PER PHASE

MECHANICAL TYPE LUGS INCLUDED  
SUITABLE FOR #2/0-14 CU/AL  
CONDUCTORS  
1 CONDUCTOR PER PHASE

CUSTOMER NOTES:

- HV1 TERMINATED AT TOP FRONT
- LV1 TERMINATED AT BOTTOM FRONT



TITLE: 3PH DISTRIBUTION TRANSFORMER

|     |          |    |                |                |
|-----|----------|----|----------------|----------------|
| 3   | 21/07/16 | PP | EDB UPDATE     | DES: JWEN      |
| 2   | 20/03/17 | PP | SEISMIC UPDATE | DATE: 15/11/09 |
| NO. | DATE     | BY | REVISION       | SCALE: NTS     |

SHEET 2 OF 3

EDBSC3A0075KK

ENCLOSURE BOTTOM VIEW



NOTE:  
 WHEN BOTTOM CABLE ENTRY IS OPTED, THE SPACE USED FOR CONDUITS IN THE FRONT OF THE TRANSFORMER SHOULD NOT OBSTRUCT MORE THAN 50% OF THE FRONT AIR INTAKE AREA DEFINED BETWEEN THE BOTTOM PLATE AND THE SUPPORTING LEGS.  
 SEE MANUAL FOR ADDITIONAL INFORMATION



TITLE: 3PH DISTRIBUTION TRANSFORMER  
 ENCLOSURE BOTTOM VIEW

|     |          |    |                |                |
|-----|----------|----|----------------|----------------|
| 3   | 21/07/16 | PP | EDB UPDATE     | DES: JWEN      |
| 2   | 20/03/17 | PP | SEISMIC UPDATE | DATE: 15/11/09 |
| NO. | DATE     | BY | REVISION       | SCALE: NTS     |

SHEET 3 OF 3

EDBSC3A0075KK