



TITLE: 3PH DISTRIBUTION TRANSFORMER  
NAMEPLATE INFORMATION

NO.	DATE	BY	REVISION	DES: DCORTEZ
				DATE: 22/01/19
				SCALE: NTS

SHEET 1 OF 3

EDBMC3A0225SBSCHCO

0.1 httpd 2026/04/02 16:56

THIS DRAWING CONTAINS STRICTLY CONFIDENTIAL INFORMATION BELONGING TO HAMMOND POWER SOLUTIONS AND MUST NOT BE DISTRIBUTED OUTSIDE AUTHORIZED PARTIES.

**hammond**  
POWER SOLUTIONS

Distribution Transformer  
Transformateur de Distribution

LR 3902  
DISTRIBUTION TRANSFORMER  
E147879

LISTED

Hyderabad, IN    Guelph, ONT    Baraboo, WI    8 03423 1344 19  
Compton, CA    Monterrey, MX    Part No. MG3A0225SBSCHCO

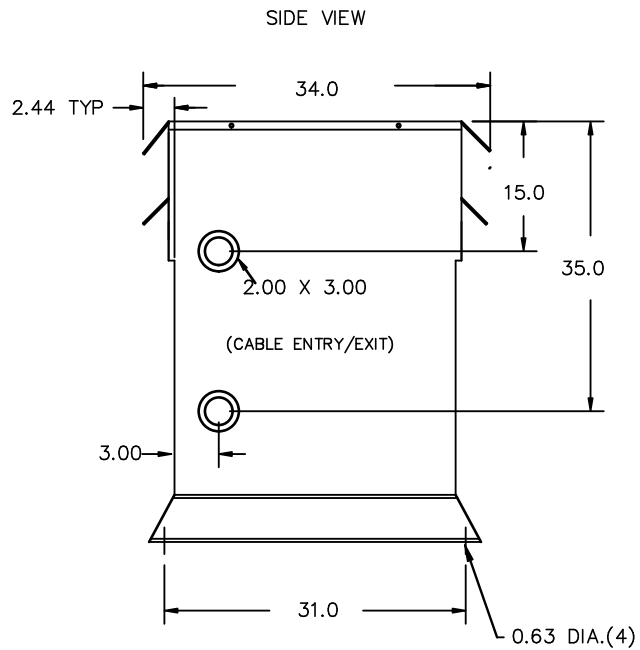
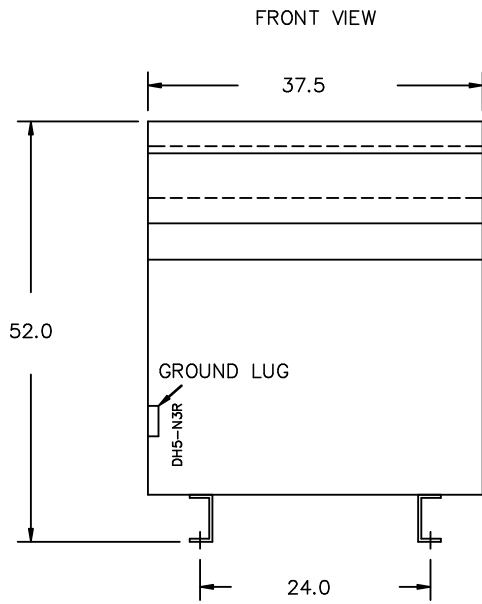
Cust. Ref. Ref. du Client	Serial No. No. de Serie	HV/HT	4160V	31.2A	
Phase	3	BIL	30 kV		
Type	K	Term Bornes	H1 H2 H3		
Cooling Refroidissement	ANN	LV/BT	208Y/120V	625A	
kVA	225	BIL	10 kV		
Temp. Rise Echauffement	150 °C	Term Bornes	X0 X1 X2 X3		
Temp Class Classe Temp	220 °C	Winding Enroulement	CU	DOE 10 CFR PART 431:2016	
Frequency Frequence Hz	60	Regulations de		CEE ACT SOR/2018-201	
Impedance % @ 170 °C	3.1	Energetique			
End. Type/Category Type ou categorie de boitier	3R				
Weight lbs/kg Poids	1570/713				

VOLTS	CURRENT COURANT	% RATED VOLTAGE % NOMINALE	CONNECTION FOR CONNECTION PAR PHASE
4368	29.7	105	1-2
4264	30.5	102.5	2-3
4160	31.2	100	3-4
4056	32.0	97.5	4-5
3952	32.9	95	5-6

SEISMIC QUALIFICATIONS:  
AS FLOOR MOUNT ONLY  
IBC 2018/ASCE 7-16  
SDS<=2.0g Z/n=0 Ip=1.5

SPACINGS BETWEEN ANY VENTILATED ENCLOSURE PANEL AND ANY ADJACENT WALL SHALL BE A MINIMUM OF 5 INCHES

d000590hb



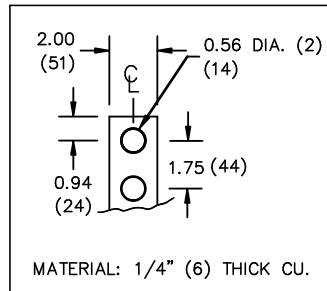
All Dimensions in inches

ENCLOSURE COLOR :ANSI 61 GREY – OUTDOOR

HV TERMINAL DETAIL

LV TERMINAL DETAIL

MECHANICAL TYPE LUGS INCLUDED  
SUITABLE FOR #14-2 CU/AL  
CONDUCTORS  
1 CONDUCTOR PER PHASE



CUSTOMER NOTES:

- HV TERMINATED AT TOP FRONT
- LV TERMINATED AT BOTTOM FRONT



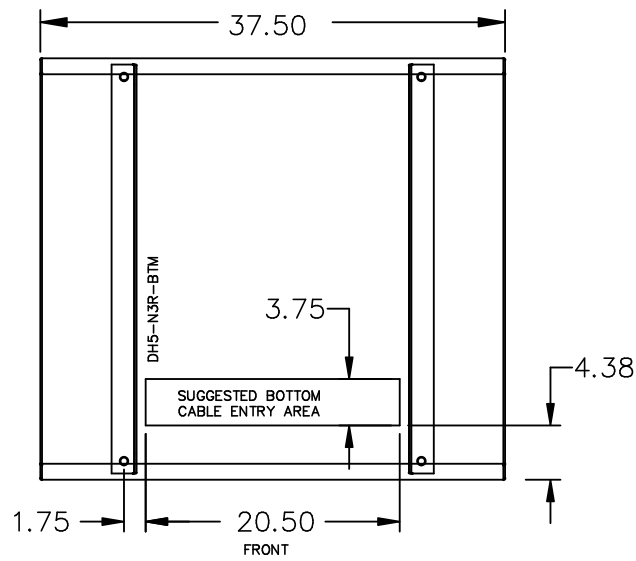
TITLE: 3PH DISTRIBUTION TRANSFORMER

NO.	DATE	BY	REVISION	DES: DCORTEZ
				DATE: 22/01/19
				SCALE: NTS

SHEET 2 OF 3

EDBMG3A0225SBSCHCO

ENCLOSURE BOTTOM VIEW



NOTE:  
 WHEN BOTTOM CABLE ENTRY IS OPTED, THE SPACE USED FOR CONDUITS IN THE FRONT OF THE TRANSFORMER SHOULD NOT OBSTRUCT MORE THAN 50% OF THE FRONT AIR INTAKE AREA DEFINED BETWEEN THE BOTTOM PLATE AND THE SUPPORTING LEGS.  
 SEE MANUAL FOR ADDITIONAL INFORMATION



TITLE: 3PH DISTRIBUTION TRANSFORMER ENCLOSURE BOTTOM VIEW			
			DES: DCORTEZ
			DATE: 22/01/19
NO.	DATE	BY	REVISION
			SCALE: NTS

SHEET 3 OF 3  
 EDBMG3A0225SBSCHCO  
 0.1 httpd 2026/04/02 16:56