

- IMPEDANCE SHOWN IS CALCULATED VALUE

d000590hb

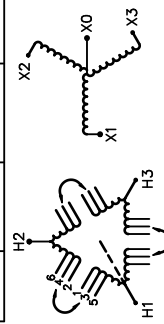


LR 3902
DISTRIBUTION TRANSFORMER
E147879 ALSO VERIFIED IN ACCORDANCE TO ENERGY STANDARD CB02.2-12

hammond Distribution Transformer
POWER SOLUTIONS Transformateur de Distribution
Guelph, ONT Baraboo, WI
Compton, CA Monterrey, MX
Hyderabad, IN Part No. MG3A0225SBSAHCO

SPACINGS BETWEEN ANY VENTILATED ENCLOSURE PANEL AND ANY ADJACENT WALL SHALL BE A MINIMUM OF 5 INCHES EXCEPT WHEN WALL MOUNTED USING APPROVED WALL MOUNT VENTILES ENTRE LES MURS ADJACENTS DOIVENT ETRE UN MINIMUM DE 5 POUNCES SEISMIC QUALIFICATIONS: FLOOR MOUNT ONLY QUALIFICATIONS SISQUES: MONTAGE AU SOL SEULEMENT OSP-0136-10 IBC 2012/ASCE 7-10 SDS<=2.0G Z/H=1 IP=1.5

VOLTS	CURRENT COURANT	% RATED VOLTAGE NOMINALE	CONNECTION CONNECTION PAR PHASE
4368	29.7	105	1-2
4264	30.5	102.5	2-3
4160	31.2	100	3-4
4056	32.0	97.5	4-5
3952	32.9	95	5-6



Serial No.	
HV/HT	4160V
BIL	30 kV
Term Bornes	H1 H2 H3
LV/BT	208Y/120V, 624.6
BIL	10 kV
Term Bornes	X0 X1 X2 X3
Energy Regulations	DOE 10 CFR PART 431:2016
Reglements Energetique	CEE ACT SOR/2011-182
Impedance % @ 170°C	4.8
End. Type/Category Type ou categorie de boitier	3R C
Weight Poids	1500 lbs



TITLE: 3PH DISTRIBUTION TRANSFORMER
NAMEPLATE INFORMATION

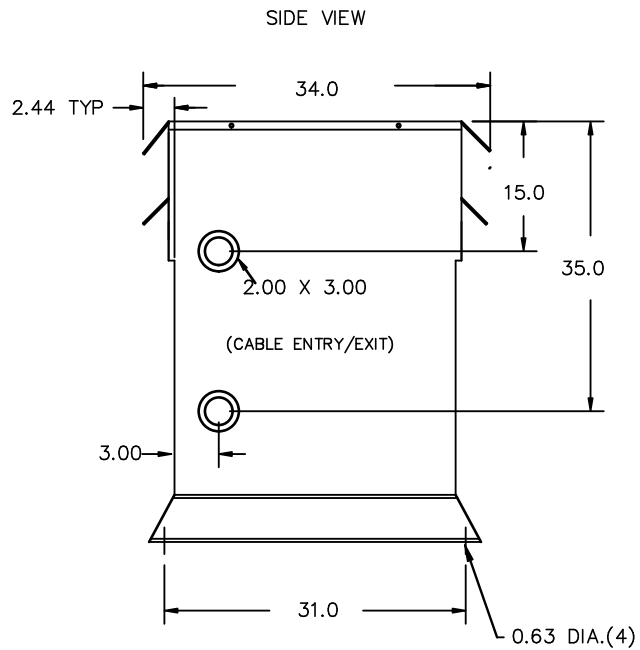
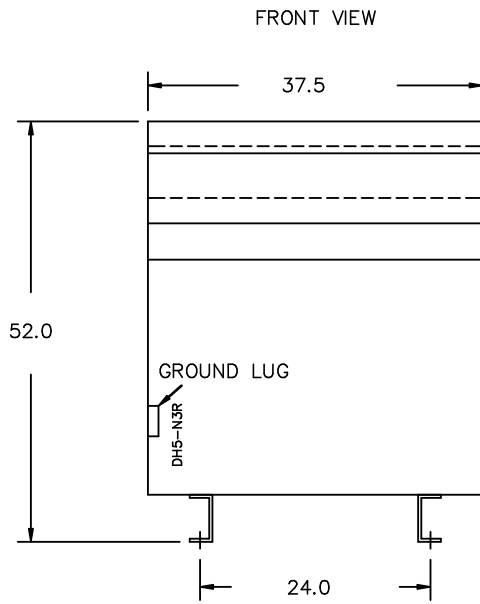
3	21/07/16	PP	EDB UPDATE	DES: ASETH
2	20/03/17	PP	SEISMIC UPDATE	DATE: 15/11/23
NO.	DATE	BY	REVISION	SCALE: NTS

SHEET 1 OF 3

EDBMG3A0225SBSAHCO

3.0 http://www.hammond.com/2026/04/03/02:24

THIS DRAWING CONTAINS STRICTLY CONFIDENTIAL INFORMATION BELONGING TO HAMMOND POWER SOLUTIONS AND MUST NOT BE DISTRIBUTED OUTSIDE AUTHORIZED PARTIES.



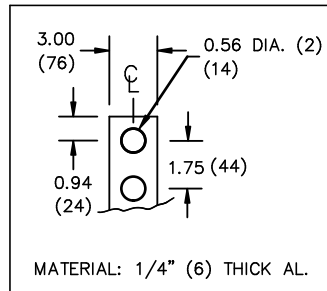
All Dimensions in inches

ENCLOSURE COLOR :ANSI 61 GREY – OUTDOOR

H.V.1. TERMINAL DETAIL

L.V.1. TERMINAL DETAIL

MECHANICAL TYPE LUGS INCLUDED
SUITABLE FOR #14-2 CU/AL
CONDUCTORS
1 CONDUCTOR PER PHASE



CUSTOMER NOTES:

- HV1 TERMINATED AT TOP FRONT
- LV1 TERMINATED AT BOTTOM FRONT



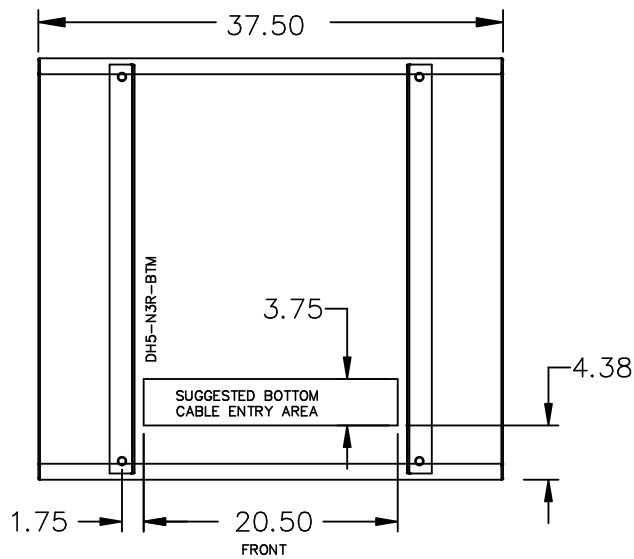
TITLE: 3PH DISTRIBUTION TRANSFORMER
MECHANICAL DETAILS

3	21/07/16	PP	EDB UPDATE	DES: ASETH
2	20/03/17	PP	SEISMIC UPDATE	DATE: 15/11/23
NO.	DATE	BY	REVISION	SCALE: NTS

SHEET 2 OF 3

EDBMC3A0225SBSAHCO

ENCLOSURE BOTTOM VIEW



NOTE:
 WHEN BOTTOM CABLE ENTRY IS OPTED, THE SPACE USED FOR CONDUITS IN THE FRONT OF THE TRANSFORMER SHOULD NOT OBSTRUCT MORE THAN 50% OF THE FRONT AIR INTAKE AREA DEFINED BETWEEN THE BOTTOM PLATE AND THE SUPPORTING LEGS.
 SEE MANUAL FOR ADDITIONAL INFORMATION



TITLE: 3PH DISTRIBUTION TRANSFORMER
 ENCLOSURE BOTTOM VIEW

3	21/07/16	PP	EDB UPDATE	DES: ASETH
2	20/03/17	PP	SEISMIC UPDATE	DATE: 15/11/23
NO.	DATE	BY	REVISION	SCALE: NTS

SHEET 3 OF 3

EDBMC3A0225SBSAHCO