



TITLE: 3PH DISTRIBUTION TRANSFORMER
NAMEPLATE INFORMATION


2	21/07/16	PP	EDB UPDATE	DES: RMOVVA
1	20/03/17	PP	SEISMIC UPDATE	DATE: 19/09/26
NO.	DATE	BY	REVISION	SCALE: NTS

SHEET 1 OF 3

EDBMG3A0150RKSCHCO

2.0 httpd 2026/06/25 06:02


THIS DRAWING CONTAINS STRICTLY CONFIDENTIAL INFORMATION BELONGING TO HAMMOND POWER SOLUTIONS AND MUST NOT BE DISTRIBUTED OUTSIDE AUTHORIZED PARTIES.



hammond
POWER SOLUTIONS

Distribution Transformer
Transformateur de Distribution

LR 3902
DISTRIBUTION TRANSFORMER
E147879

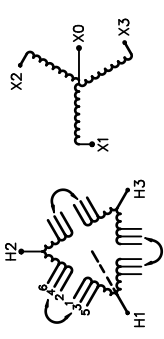


LISTED

Hyderabad, IN Guelph, ONT Baraboo, WI 03423 13414 3
Compton, CA Monterrey, MX Part No. MG3A0150RKSCHCO

Cust. Ref. Ref. du Client	Serial No. No. de Serie		
Phase	HV/HT	2400V	36.1A
Type	BIL	20 kV	
Cooling Refroidissement	Term Bornes	H1 H2 H3	
kVA	LV/BT	480Y/277V	180A
Temp. Rise Echauffement	BIL	10 kV	
Temp Class Classe Temp	Term Bornes	X0 X1 X2 X3	
Winding Enroulement	Energy Regulations	DOE 10 CFR PART 431:2016	
Frequency Frequence Hz	Reglements de Energetique	CEE ACT SOR/2018-201	
Impedance % @ 170°C			
End. Type/Category Type ou categorie de boitier		3R	C
Weight Poids			1100

VOLTS	CURRENT COURANT	% RATED VOLTAGE % NOMINALE	CONNECTION THE CONNECTION PAR PHASE
2520	34.4	105	1-2
2460	35.2	102.5	2-3
2400	36.1	100	3-4
2340	37.0	97.5	4-5
2280	38.0	95	5-6



SEISMIC QUALIFICATIONS:
AS FLOOR MOUNT ONLY
BC 2018/ASCE 7-16
SDS<=2.0g Z/n=1 Ip=1.5

SPACINGS BETWEEN ANY VENTILATED ENCLOSURE PANEL AND ANY ADJACENT WALL SHALL BE A MINIMUM OF 5 INCHES EXCEPT WHEN WALL MOUNTED USING APPROVED WALL MOUNT

d000590hb



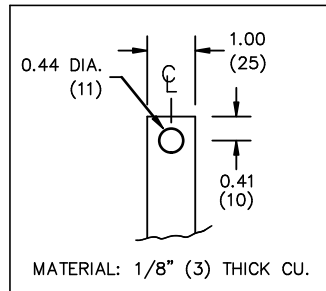
All Dimensions in inches

ENCLOSURE COLOR :ANSI 61 GREY – OUTDOOR

HV TERMINAL DETAIL

LV TERMINAL DETAIL

MECHANICAL TYPE LUGS INCLUDED
SUITABLE FOR #14-2 CU/AL
CONDUCTORS
1 CONDUCTOR PER PHASE



CUSTOMER NOTES:

- HV TERMINATED AT TOP FRONT
- LV TERMINATED AT BOTTOM FRONT
- XO TERMINATED AT BOTTOM FRONT



TITLE: 3PH DISTRIBUTION TRANSFORMER

2	21/07/16	PP	EDB UPDATE	DES: RMOVVA
1	20/03/17	PP	SEISMIC UPDATE	DATE: 19/09/26
NO.	DATE	BY	REVISION	SCALE: NTS

SHEET 2 OF 3

EDBMC3A0150RKSCHCO



NOTE:
 WHEN BOTTOM CABLE ENTRY IS OPTED, THE SPACE USED FOR CONDUITS IN THE FRONT OF THE TRANSFORMER SHOULD NOT OBSTRUCT MORE THAN 50% OF THE FRONT AIR INTAKE AREA DEFINED BETWEEN THE BOTTOM PLATE AND THE SUPPORTING LEGS.
 SEE MANUAL FOR ADDITIONAL INFORMATION



TITLE: 3PH DISTRIBUTION TRANSFORMER
 ENCLOSURE BOTTOM VIEW

2	21/07/16	PP	EDB UPDATE	DES: RMOVVA
1	20/03/17	PP	SEISMIC UPDATE	DATE: 19/09/26
NO.	DATE	BY	REVISION	SCALE: NTS

SHEET 3 OF 3

EDBMC3A0150RKSCHCO