

- IMPEDANCE SHOWN IS CALCULATED VALUE - NOT GUARANTEED

d000590hb

hammond Distribution Transformer
POWER SOLUTIONS Transformateur de Distribution

Serial No. _____
 No. de Serie _____

Phase 3 HV/HT 2400V

Type K BIL 20 kV

Cooling Refroidissement ANN Term Bornes H1 H2 H3

kVA 150 LV/BT 208Y/120V 416A

Temp. Rise Echauffement 150 °C BIL 10 kV

Temp Class 220 °C Term Bornes X0 X1 X2 X3

Winding Enroulement CU Energy Regulations DOE 10 CFR PART 431:2016

Frequency 60 Hz Reglements Energetique CEE ACT SOR/2018-201

Impedance % @ 170 °C 4

End. Type/Category Type ou categorie de boîtier 3R C

Weight Poids 1150 lbs

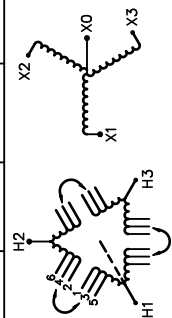
UL LR 3902
 DISTRIBUTION TRANSFORMER E147879
 ALSO VERIFIED IN ACCORDANCE TO ENERGY STANDARD C802.2-18 BY UNDERWRIERS LABORATORIES INC. 316 LISTED

SPACINGS BETWEEN ANY VENTILATED ENCLOSURE PANEL AND ANY ADJACENT WALL SHALL BE A MINIMUM OF 5 INCHES
 ESPACEMENTS ENTRE LES PANNEAUX DE BOÎTIER VENTILÉ ET LES MURS ADJACENT DOIVENT ÊTRE UN MINIMUM DE 5 POUNCES

SEISMIC QUALIFICATIONS, FLOOR MOUNT ONLY
 QUALIFICATIONS SISMOES, MONTAGE AU SOL SEULEMENT
 OSP-0136-10 IBC 2012/ASCE 7-10
 SDS<=2.0G Z/H=1 IP=1.5

SEISMIC QUALIFICATIONS:
 XS FLOOR MOUNT ONLY
 IBC 2018/ASCE 7-16
 SDS<=2.0g Z/H=1 IP=1.5

VOLTS	CURRENT COURANT	% RATED VOLTAGE % NOMINALE	CONNECTION CONNECTION PAR PHASE
2520	34.4	105	1-2
2460	35.2	102.5	2-3
2400	36.1	100	3-4
2340	37.0	97.5	4-5
2280	38.0	95	5-6



TITLE: 3PH DISTRIBUTION TRANSFORMER NAMEPLATE INFORMATION

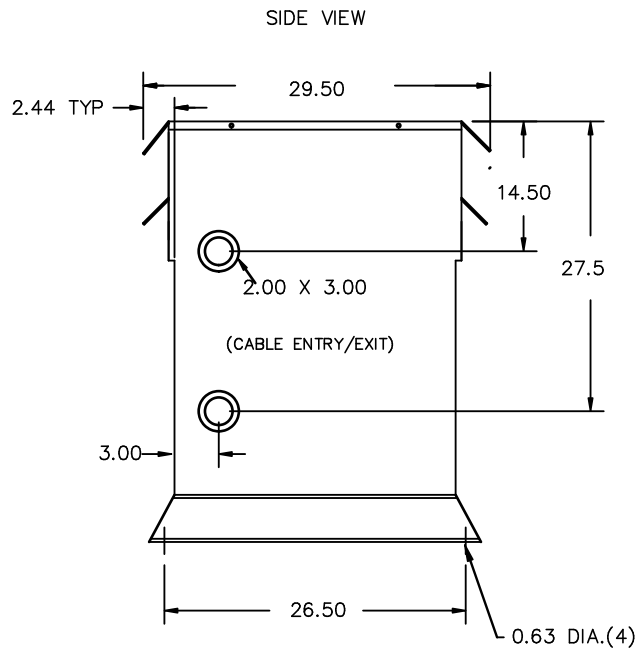
NO.	DATE	BY	REVISION
4	21/07/16	PP	EDB UPDATE
3	20/03/17	PP	SEISMIC UPDATE

DES: DCORTEZ	DATE: 16/07/29
SCALE: NTS	

SHEET 1 OF 3
 EDBMG3A0150RBSCHCO
 4.0 httpd 2026/04/26 11:48
 THIS DRAWING CONTAINS STRICTLY CONFIDENTIAL INFORMATION BELONGING TO HAMMOND POWER SOLUTIONS AND MUST NOT BE DISTRIBUTED OUTSIDE AUTHORIZED PARTIES.



All Dimensions in inches

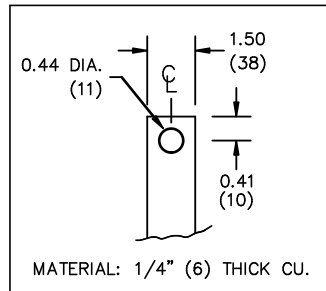


ENCLOSURE COLOR :ANSI 61 GREY – OUTDOOR

HV TERMINAL DETAIL

LV TERMINAL DETAIL

MECHANICAL TYPE LUGS INCLUDED
SUITABLE FOR #14-2 CU/AL
CONDUCTORS
1 CONDUCTOR PER PHASE



CUSTOMER NOTES:

- HV TERMINATED AT TOP FRONT
- LV TERMINATED AT BOTTOM FRONT



TITLE: 3PH DISTRIBUTION TRANSFORMER

4	21/07/16	PP	EDB UPDATE	DES: DCORTEZ
3	20/03/17	PP	SEISMIC UPDATE	DATE: 16/07/29
NO.	DATE	BY	REVISION	SCALE: NTS

SHEET 2 OF 3

EDBMC3A0150RBSCHCO



NOTE:
 WHEN BOTTOM CABLE ENTRY IS OPTED, THE SPACE USED FOR CONDUITS IN THE FRONT OF THE TRANSFORMER SHOULD NOT OBSTRUCT MORE THAN 50% OF THE FRONT AIR INTAKE AREA DEFINED BETWEEN THE BOTTOM PLATE AND THE SUPPORTING LEGS.
 SEE MANUAL FOR ADDITIONAL INFORMATION



TITLE: 3PH DISTRIBUTION TRANSFORMER
 ENCLOSURE BOTTOM VIEW

4	21/07/16	PP	EDB UPDATE	DES: DCORTEZ
3	20/03/17	PP	SEISMIC UPDATE	DATE: 16/07/29
NO.	DATE	BY	REVISION	SCALE: NTS

SHEET 3 OF 3

EDBMC3A0150RBSCHCO