



TITLE: 1PH DISTRIBUTION TRANSFORMER
NAMEPLATE INFORMATION


NO.	DATE	BY	REVISION	DES:	RMOVVA
2	22/04/20	RM	CHANGED NPL VER:	DATE:	19/10/31
1	21/07/16	PP	EDB UPDATE	SCALE:	NTS

SHEET 1 OF 3

EDBMG2L0100RESCHCO

2.0 httpd 2026/06/08 21:18

THIS DRAWING CONTAINS STRICTLY CONFIDENTIAL INFORMATION BELONGING TO HAMMOND POWER SOLUTIONS AND MUST NOT BE DISTRIBUTED OUTSIDE AUTHORIZED PARTIES.



POWER SOLUTIONS

Distribution Transformer
Transformateur de Distribution

LR 3902
DISTRIBUTION TRANSFORMER
E147879

Hyderabad, IN Guelph, ONT Baraboo, WI
Compton, CA Monterrey, MX

Part No. **MG2L0100RESCHCO**

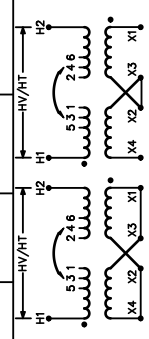
ALSO VERIFIED IN ACCORDANCE
TO ENERGY STANDARD C802.2-18
BY UNDERWRITERS LABORATORIES INC. © 316

Cust. Ref.	Serial No.	HV/HT	2400V	41.7A	CONNECTION FOR CONNECTION PAR PHASE
Ref. du Client	No. de Serie	HV/HT	2400V	41.7A	1-2 2-3 3-4 4-5 5-6
Phase	1	BIL	20 kV		
Type	F	Term Bornes	H1 H2		
Cooling Refroidissement	ANN	LV/BT	120/240V	417A	
kVA	100	BIL	10 kV		
Temp. Rise Echauffement	150 °C	Term Bornes	X4 X2 X3 X1		
Temp Class	220 °C	Winding Enroulement	CU		
Frequency	60	Energy Regulations	DOE 10 CFR PART 431:2016		
Impedance % @ 170 °C	3.8	Reglements Energetique	CEE ACT SOR/2018-201		
End. Type/Category Type ou categorie de boîtier	3R	Weight lbs/kg Poids	905/411		

VOLTS	CURRENT COURANT	% RATED VOLTAGE % NOMINALE	CONNECTION FOR CONNECTION PAR PHASE
2520 2460 2400 2340 2280	39.7 40.7 41.7 42.7 43.9	105 102.5 100 97.5 95	1-2 2-3 3-4 4-5 5-6

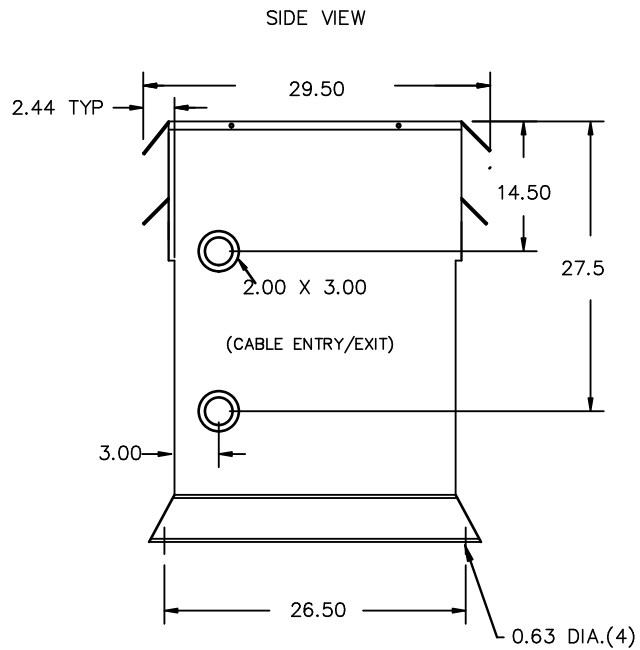
SPACINGS BETWEEN ANY VENTILATED ENCLOSURE PANEL AND ANY ADJACENT WALL SHALL BE A MINIMUM OF 5 INCHES EXCEPT WHEN WALL MOUNTED USING APPROVED WALL MOUNT!

SECONDARY VOLTS
120V LINK X4-X2 & X3-X1
240V LINK X2-X3



SEISMIC QUALIFICATIONS:
AS FLOOR MOUNT ONLY
IBC 2018/ASCE 7-16
SDS<=2.0g Z/n=1 Ip=1.5

d000590hb



All Dimensions in inches

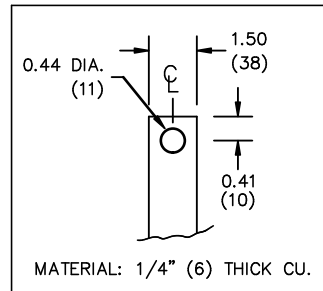
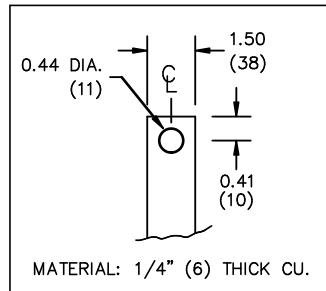
ENCLOSURE COLOR :ANSI 61 GREY – OUTDOOR

HV TERMINAL DETAIL

LV1 TERMINAL DETAIL

LV2 TERMINAL DETAIL

MECHANICAL TYPE LUGS INCLUDED
SUITABLE FOR #14-2 CU/AL
CONDUCTORS
1 CONDUCTOR PER PHASE



CUSTOMER NOTES:

- HV TERMINATED AT TOP FRONT
- LV1 TERMINATED AT BOTTOM FRONT
- LV2 TERMINATED AT BOTTOM FRONT



TITLE: 1PH DISTRIBUTION TRANSFORMER

2	22/04/20	RM	CHANGED NPL VER:	DES: RMOVVA
1	21/07/16	PP	EDB UPDATE	DATE: 19/10/31
NO.	DATE	BY	REVISION	SCALE: NTS

SHEET 2 OF 3

EDBMG2100RESCHCO



NOTE:
 WHEN BOTTOM CABLE ENTRY IS OPTED, THE SPACE USED FOR CONDUITS IN THE FRONT OF THE TRANSFORMER SHOULD NOT OBSTRUCT MORE THAN 50% OF THE FRONT AIR INTAKE AREA DEFINED BETWEEN THE BOTTOM PLATE AND THE SUPPORTING LEGS.
 SEE MANUAL FOR ADDITIONAL INFORMATION



TITLE: 1PH DISTRIBUTION TRANSFORMER
 ENCLOSURE BOTTOM VIEW

2	22/04/20	RM	CHANGED NPL VER:	DES: RMOVVA
1	21/07/16	PP	EDB UPDATE	DATE: 19/10/31
NO.	DATE	BY	REVISION	SCALE: NTS

SHEET 3 OF 3

EDBMC2100RESCHCO