



TITLE: 3PH FORTRESS C TRANSFORMER
NAMEPLATE INFORMATION

NO.	DATE	BY	REVISION

DES: PPI/CASSI
DATE: 23/12/07
SCALE: NTS

SHEET 1 OF 2

EDBFCA0015KD

POWER SOLUTIONS
Guelph, ONT Baraboo, WI
Compton, CA Monterrey, MX

HPS Fortress™ C
Dry Type Encapsulated Transformer
Transformateur de Type Sec Encapsulé

Part No. **FC2A0015KD**

GENERAL PURPOSE TRANSFORMER 2521 E0394

LISTED LR3902

8 03423 19935 7

Serial No. []
No. de Serie []

Phase [] HV/HT []

Type [] BIL []

Cooling [] Refroidissement []

kVA [] LV/BT []

Temp. Rise [] Echauffement []

Temp Class [] Classe Temp []

Winding [] Enroulement []

Frequency [] Fréquence Hz []

Impedance [] % @ 155°C []

Encl. Type [] Type De Coffrage []

Weight [] lbs/kg [] Poids []

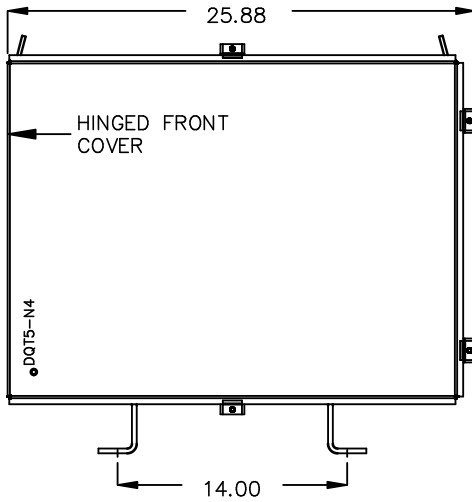
VOLTS	CURRENT COURANT	% RATED VOLTAGE % TENSION NOMINALE	CONNECTION EACH PHASE CONNECTION PAR PHASE
504	17.2	105	1
480	17.6	102.5	2
468	18.0	100	3
456	18.5	97.5	4
444	19.0	95	5
432	19.5	92.5	6
	20.0	90	7

SPACINGS BETWEEN ANY VENTILATED ENCLOSURE PANEL AND ANY ADJACENT WALL SHALL BE A MINIMUM OF 3 INCHES ELECTROSTATIC SHIELD

Diagram showing primary windings H1, H2, H3 and secondary windings X0, X1, X2, X3.

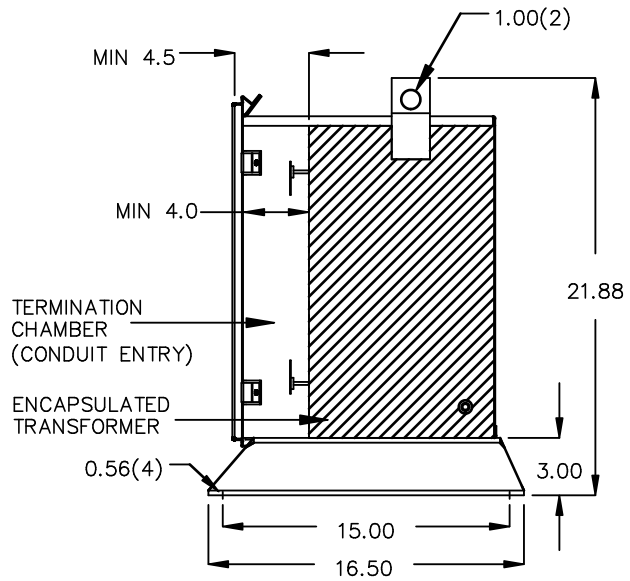
d000200bqfc

FRONT VIEW



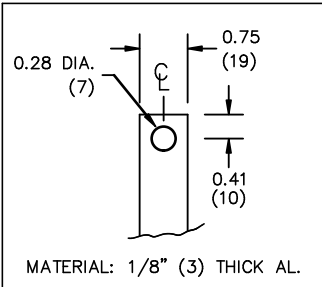
All Dimensions in inches

SIDE VIEW

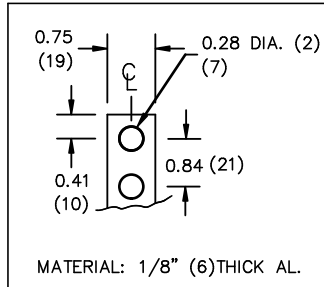


ENCLOSURE COLOR : ANSI 61 GREY – OUTDOOR

HV TERMINAL DETAIL



LV TERMINAL DETAIL



CUSTOMER NOTES:

- HV TERMINATED AT BOTTOM FRONT
- LV TERMINATED AT TOP FRONT



TITLE: 3PH FORTRESS C TRANSFORMER

DES:	PPICASSI
DATE:	23/12/07
SCALE:	NTS

NO.	DATE	BY	REVISION

SHEET 2 OF 2

EDBFC2A0015KD