



® LR 3902

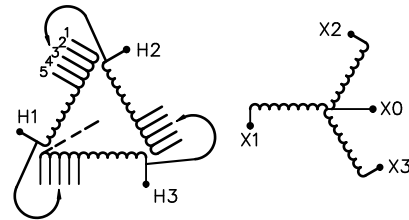
UL DRY TYPE TRANSFORMER 774J5 E112313

LISTED

GUELPH, ONT. BARABOO, WI COMPTON, CA MONTERREY, MX

THREE PHASE DRY TYPE DRIVE ISOLATION TRANSFORMER
TRANSFORMATEUR TRIPHASE POUR VARIATEUR DE VITESSE DE MOTEURS

HV/HT	460V				Cust. Ref. Réf. du client	
BIL	-				Serial No. No. de série	
TERM. BORNES	H1 H2 H3				Part No. No. de pièce	DM220JC
	VOLTS	CURRENT COURANT	% RATED VOLTAGE % TENSION NOMINALE	CONNECTION EACH PHASE CONNEXION PAR PHASE	kVA	220
	483	263	105	1	TYPE	K
	472	269	102.5	2	Cooling Refroidissement	ANN
	460	276	100	3	Temp. Rise Echauffement	150 °C
	448	283	97.5	4	Temp. Class Classe de Temp.	220 °C
	437	291	95	5	Frequency Fréquence	60 Hz
LV/BT	230Y/133V				Impédance % @ 170 °C	3.8
BIL	-				Encl. Type Type de boîtier	NEMA-3R
TERM. BORNES	X0 X1 X2 X3				Wt Poids	1400 lbs
					Winding Enroulement	AL



SPACINGS BETWEEN ANY VENTILATED ENCLOSURE PANEL AND ANY ADJACENT WALL SHALL BE A MINIMUM OF 5 INCHES

d003102b



TITLE: 3PH DRIVE TRANSFORMER
NAMEPLATE INFORMATION

5	21/07/13	PP	EDB UPDATE	DES: MBURSAC
4	12/01/25	RM	HCN: 41368	DATE: 01/01/08
NO.	DATE	BY	REVISION	SCALE: NTS

SHEET 1 OF 2

EDBDM220JC

5.0 httpd 2026/04/04 00:44 THIS DRAWING CONTAINS STRICTLY CONFIDENTIAL INFORMATION BELONGING TO HAMMOND POWER SOLUTIONS AND MUST NOT BE DISTRIBUTED OUTSIDE AUTHORIZED PARTIES.



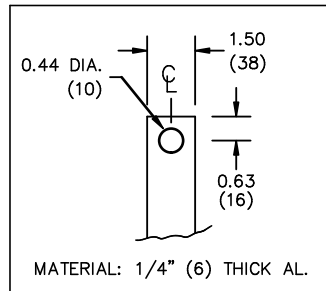
All Dimensions in inches

ENCLOSURE COLOR :ANSI 61 GREY – OUTDOOR

H.V.1. TERMINAL DETAIL

L.V.1. TERMINAL DETAIL

MECHANICAL TYPE LUGS INCLUDED
SUITABLE FOR 350MCM-6 CU/AL
CONDUCTORS
2 CONDUCTORS PER PHASE



CUSTOMER NOTES:

- HV1 TERMINATED AT TOP FRONT
- LV1 TERMINATED AT BOTTOM FRONT
- C/W 1-”NC”- THERMOSTAT PER COIL CONNECTED TO T.B.



TITLE:		3PH DRIVE TRANSFORMER		
5	21/07/13	PP	EDB UPDATE	DES: MBURSAC
4	12/01/25	RM	HCN: 41368	DATE: 01/01/08
NO.	DATE	BY	REVISION	SCALE: NTS

SHEET 2 OF 2

EDBDM220JC