

**hammond**  
POWER SOLUTIONS



US LISTED

E61431

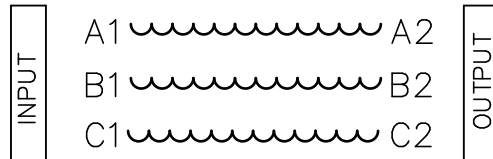
GUELPH,ONT BARABOO,WI COMPTON,CA MONTERREY,MX

MADE IN CANADA

HPS Centurion S – 3 Phase SineWave Filter

RATING (HP)	<input type="text" value="125"/>	CUST. REF.	<input type="text"/>
SYS. VOLTAGE	<input type="text" value="480"/>	SERIAL NO.	<input type="text"/>
FREQ. (Hz)	<input type="text" value="90"/>	PART NO.	<input type="text" value="CS1K0160C"/>
CURRENT(AMP)	<input type="text" value="110"/>	TYPE SR-3	<input type="text" value="ANN"/>
		WDG MATERIAL	<input type="text" value="CU"/>
TEMP. RISE °C	<input type="text" value="160"/>	ENCL. TYPE	<input type="text" value="3R"/>
TEMP. CLASS °C	<input type="text" value="220"/>	WEIGHT lbs/kg	<input type="text" value="220/100"/>

F0677EF



**hammond**  
POWER SOLUTIONS

TITLE: LINE REACTOR  
NAMEPLATE INFORMATION

				DES: MVAGHANI
				DATE: 26/03/09
NO.	DATE	BY	REVISION	SCALE: NTS

SHEET 1 OF 2

EDBCS1K0160C

FRONT VIEW



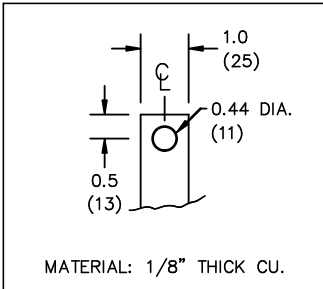
SIDE VIEW



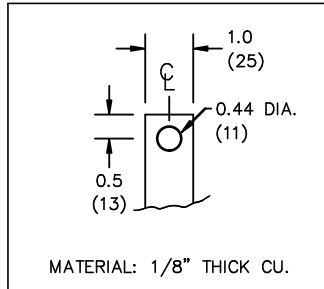
All Dimensions in inches

ENCLOSURE COLOR : ANSI 61 GREY – OUTDOOR

INPUT TERMINAL DETAIL



OUTPUT TERMINAL DETAIL



CUSTOMER NOTES:

- INPUT TERMINATED AT TOP FRONT
- OUTPUT TERMINATED AT BOTTOM FRONT



TITLE: LINE REACTOR  
ENCLOSURE & TERMINAL DETAIL

				DES: MVAGHANI
				DATE: 26/03/09
NO.	DATE	BY	REVISION	SCALE: NTS

SHEET 2 OF 2

EDBCS1K0160C