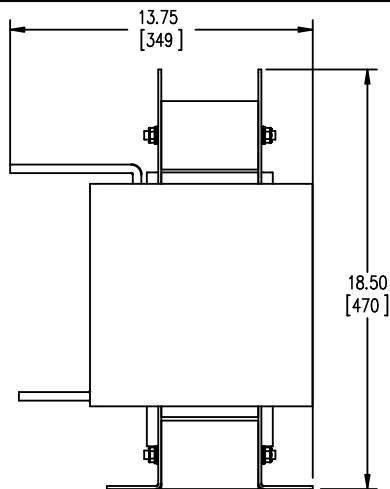
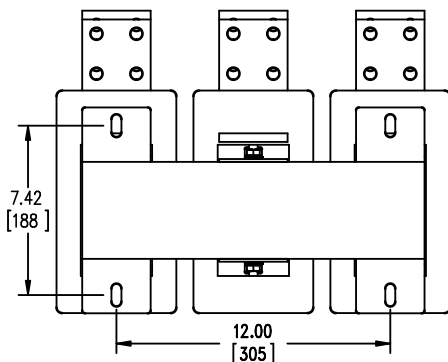


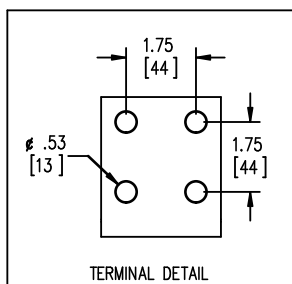
BOTTOM VIEW



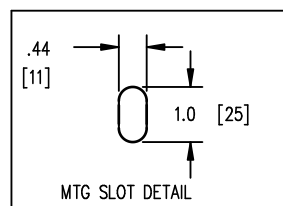
SIDE VIEW



BOTTOM VIEW



TERMINAL DETAIL



MTG SLOT DETAIL



TOLERANCES
MOUNTING CENTERS = +/- .06"
MOUNTING HOLE SIZE = +/- .005"

THIS DRAWING CONTAINS PROPRIETARY INFORMATION
BELONGING TO HAMMOND POWER SOLUTIONS INC.,
AND IS NOT FOR GENERAL DISTRIBUTION

All Dimensions in Inches
mm in Parenthesis

REACTOR

hammond 
POWER SOLUTIONS

HPS CENTURION R
3PH DRY TYPE
REACTOR

P/N CRX1080AC

INDUCT. 0.022 MH 50/60 HZ 1080 AMPS

0.6 KV CLASS WT: 270/123 lbs/kg IP00

AMBIENT: 50° TEMP CLASS: 220 TYPE JR-3

USE WITH SUITABLY RATED LISTED (ZMVV) LUGS

WINDING TERMINAL TEMPERATURE: 75° C



MADE IN CANADA
IND. CONT. EQ. E61431

f003782e

NOTES:

hammond 
POWER SOLUTIONS

TITLE: IRON CORE LINE REACTOR

| |
|----------------|
| DES: PBAKER |
| DATE: 14/07/04 |
| SCALE: NTS |

SHEET 1 OF 1

EDBCRX1080AC

0.0 jwen 2023/08/17 19:45