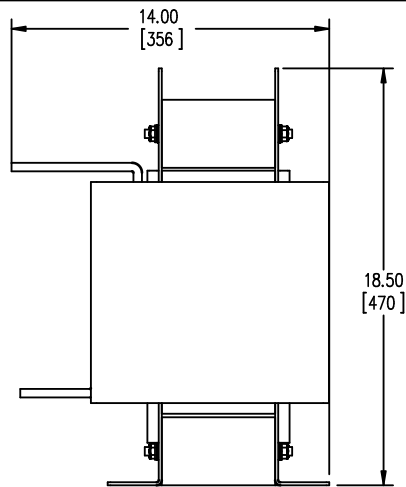
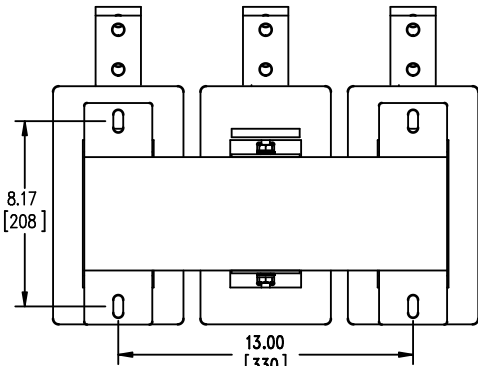


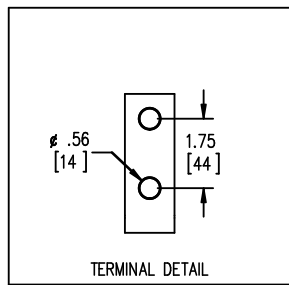
BOTTOM VIEW



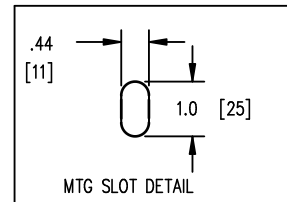
SIDE VIEW



BOTTOM VIEW



TERMINAL DETAIL



MTG SLOT DETAIL



TOLERANCES
MOUNTING CENTERS = +/- .06"
MOUNTING HOLE SIZE = +/- .005"

THIS DRAWING CONTAINS PROPRIETARY INFORMATION
BELONGING TO HAMMOND POWER SOLUTIONS INC.,
AND IS NOT FOR GENERAL DISTRIBUTION

All Dimensions in Inches
mm in Parenthesis

REACTOR

hammond 
POWER SOLUTIONS

HPS CENTURION R
3PH DRY TYPE
REACTOR

P/N CRX1000DC

INDUCT. 0.037MH 50/60 HZ 1000 AMPS

0.6 KV CLASS WT: 364/166 lbs/kg IP00

AMBIENT: 50° TEMP CLASS: 220 TYPE JR

USE WITH SUITABLY RATED LISTED (ZMVV) LUGS

WINDING TERMINAL TEMPERATURE: 75° C

f003782e



MADE IN CANADA
IND. CONT. EQ. E61431

NOTES:

hammond 
POWER SOLUTIONS

TITLE: IRON CORE LINE REACTOR

DES:	AYU
DATE:	15/03/26
SCALE:	NTS

NO. DATE BY REVISION

SHEET 1 OF 1

EDBCRX1000DC

0.2 jwen 2023/08/17 19:45