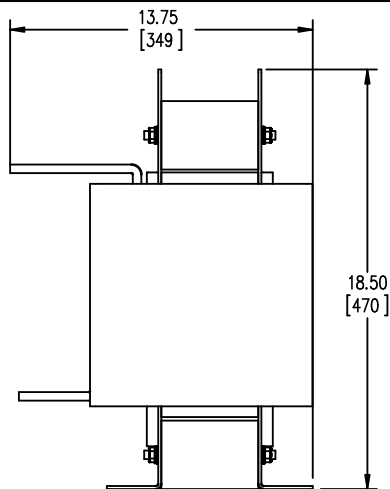
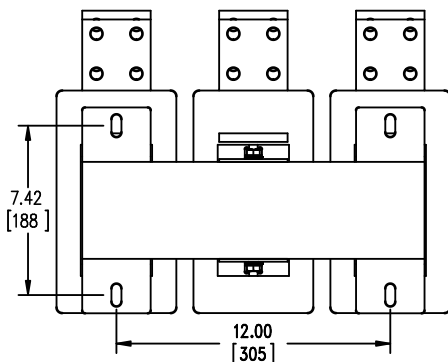


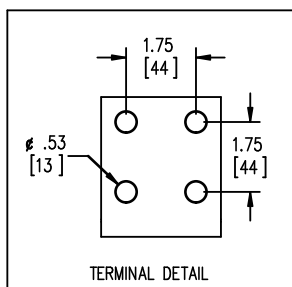
BOTTOM VIEW



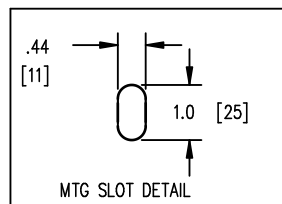
SIDE VIEW



BOTTOM VIEW



TERMINAL DETAIL



MTG SLOT DETAIL



TOLERANCES  
MOUNTING CENTERS =  $\pm .06"$   
MOUNTING HOLE SIZE =  $\pm .005"$

THIS DRAWING CONTAINS PROPRIETARY INFORMATION  
BELONGING TO HAMMOND POWER SOLUTIONS INC.,  
AND IS NOT FOR GENERAL DISTRIBUTION

All Dimensions in Inches  
mm in Parenthesis

REACTOR

**hammond**   
POWER SOLUTIONS

HPS CENTURION R  
3PH DRY TYPE  
REACTOR

P/N CRX0960AC

INDUCT. 0.022 MH 50/60 HZ 960 AMPS

0.6 KV CLASS WT: 270/123 lbs/kg IP00

AMBIENT: 50° TEMP CLASS: 220 TYPE JR-3

USE WITH SUITABLY RATED LISTED (ZMVV) LUGS

WINDING TERMINAL TEMPERATURE: 75° C

f003782e



MADE IN CANADA  
IND. CONT. EQ. E61431

NOTES:

**hammond**   
POWER SOLUTIONS

TITLE: IRON CORE LINE REACTOR

DES: PBAKER
DATE: 14/07/04
SCALE: NTS

SHEET 1 OF 1

EDBCRX0960AC

0.3 jwen 2023/08/17 19:45