



TITLE: IRON CORE LINE REACTOR
NAMEPLATE INFORMATION

NO.	DATE	BY	REVISION	DES: PBAKER
				DATE: 19/04/29
				SCALE: NTS

SHEET 1 OF 2

EDBCRX0750DE

hammond
POWER SOLUTIONS

HPS CENTURION R
3PH DRY TYPE
REACTOR

P/N CRX0750DE

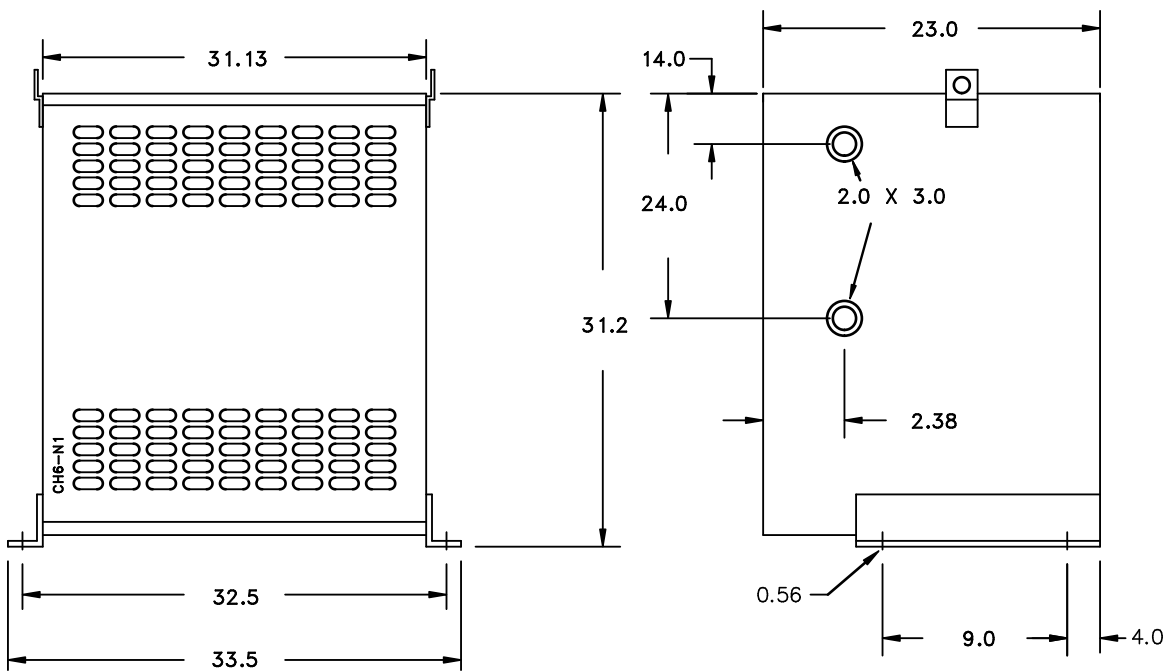
INDUCT. .049 MH 50/60 HZ 750 AMPS

0.6 KV CLASS WT: 305 lbs ENCL. TYPE 1/IP00

AMBIENT: 50° TEMP CLASS: 220 TYPE KR-3A

USE WITH SUITABLY RATED LISTED (ZMWV) LUGS
WINDING TERMINAL TEMPERATURE: 75° C

MADE IN CANADA
f003783e

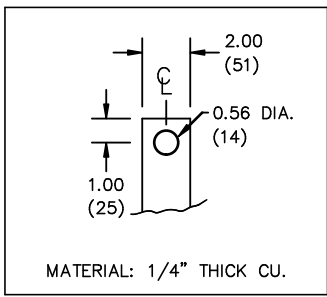
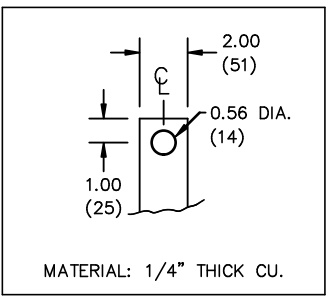


All Dimensions in inches

ENCLOSURE COLOR :ANSI 61 GREY – INDOOR

IN TERMINAL DETAIL

OUT TERMINAL DETAIL



- CUSTOMER NOTES:
- IN TERMINATED AT BOTTOM FRONT
 - OUT TERMINATED AT TOP FRONT



TITLE: IRON CORE LINE REACTOR				DES: PBAKER
				DATE: 19/04/29
NO.	DATE	BY	REVISION	SCALE: NTS

SHEET 2 OF 2

EDBCRX0750DE

0.0 httpd 2026/04/03 10:32

THIS DRAWING CONTAINS STRICTLY CONFIDENTIAL INFORMATION BELONGING TO HAMMOND POWER SOLUTIONS AND MUST NOT BE DISTRIBUTED OUTSIDE AUTHORIZED PARTIES.