



TITLE: IRON CORE LINE REACTOR  
NAMEPLATE INFORMATION

NO.	DATE	BY	REVISION	DES: PBAKER
				DATE: 23/04/17
				SCALE: NTS

SHEET 1 OF 2

EDBCRX0700EE

0.1 httpd 2026/04/02 12:37

**hammond**  
POWER SOLUTIONS

HPS CENTURION R  
3PH DRY TYPE  
REACTOR

P/N CRX0700EE

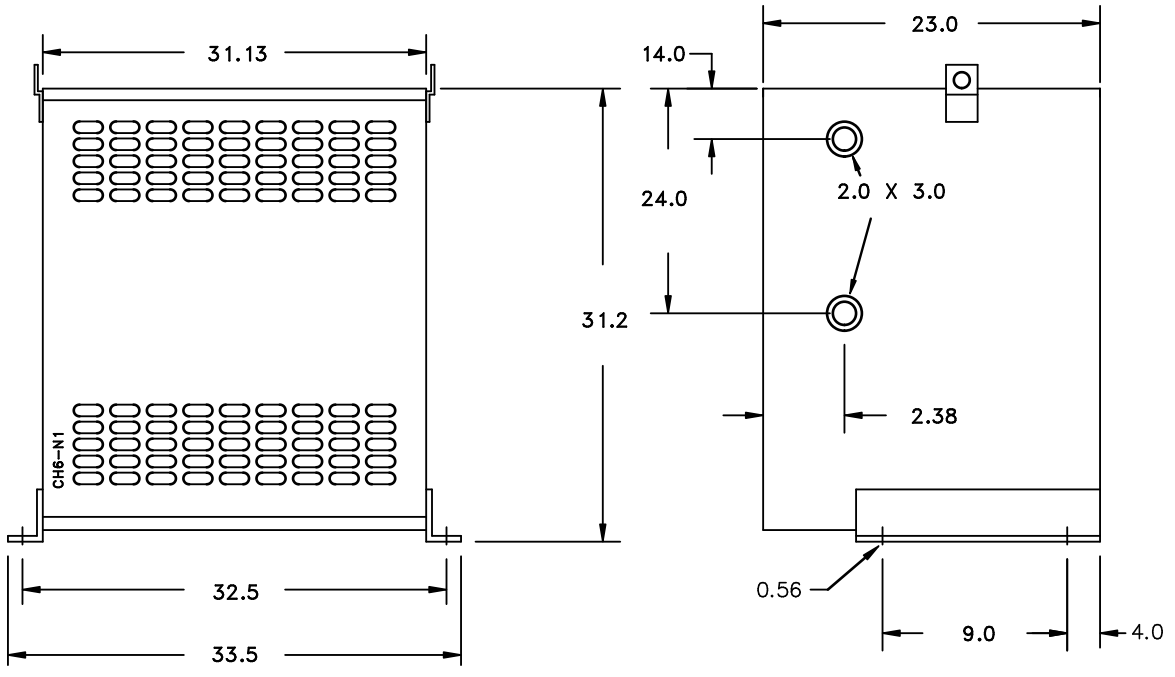
INDUCT. .066 MH 50/60 HZ 700 AMPS

0.6 KV CLASS WT: 350/159 lbs/kg TYPE 1/IP00

AMBIENT: 50° TEMP CLASS: 220 TYPE JR-3A

USE WITH SUITABLY RATED LISTED (ZMWV) LUGS  
WINDING TERMINAL TEMPERATURE: 75° C

MADE IN CANADA  
f003783e

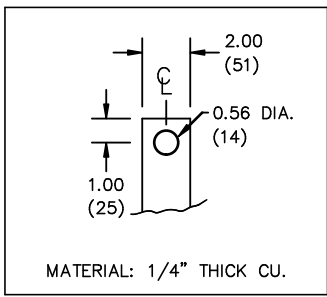
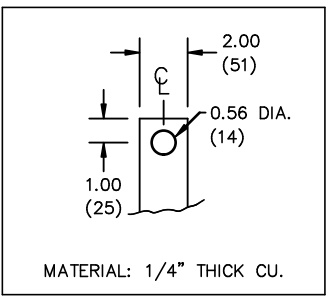


All Dimensions in inches

ENCLOSURE COLOR :ANSI 61 GREY – INDOOR

INPUT TERMINAL DETAIL

OUTPUT TERMINAL DETAIL



CUSTOMER NOTES:

- INPUT TERMINATED AT TOP FRONT
- OUTPUT TERMINATED AT BOTTOM FRONT



TITLE: IRON CORE LINE REACTOR ENCLOSURE & TERMINATION DETAIL				
				DES: PBAKER
				DATE: 23/04/17
NO.	DATE	BY	REVISION	SCALE: NTS

SHEET 2 OF 2

EDBCRX0700EE

0.1 httpd 2026/04/02 12:37

THIS DRAWING CONTAINS STRICTLY CONFIDENTIAL INFORMATION BELONGING TO HAMMOND POWER SOLUTIONS AND MUST NOT BE DISTRIBUTED OUTSIDE AUTHORIZED PARTIES.