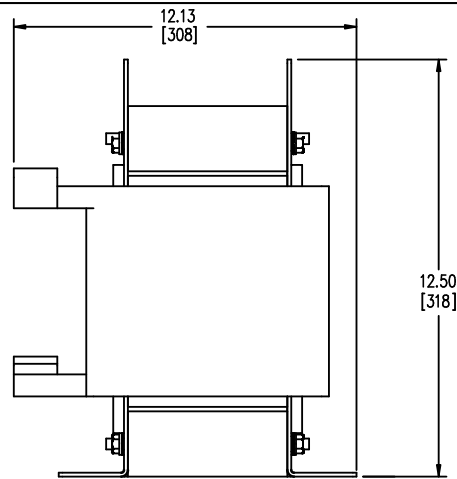
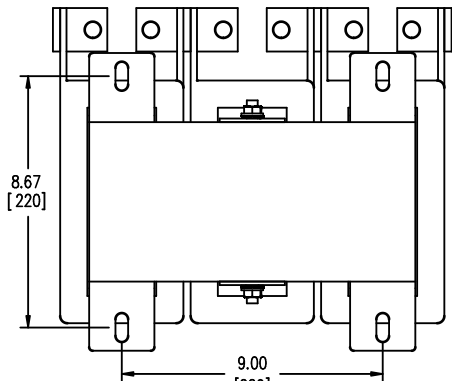


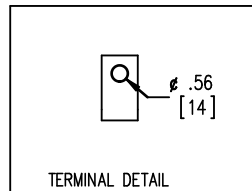
FRONT VIEW



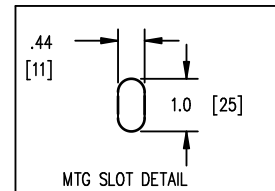
SIDE VIEW



BOTTOM VIEW



TERMINAL DETAIL



MTG SLOT DETAIL



TOLERANCES  
MOUNTING CENTERS = +/- .06"  
MOUNTING HOLE SIZE = +/- .005"

THIS DRAWING CONTAINS PROPRIETARY INFORMATION  
BELONGING TO HAMMOND POWER SOLUTIONS INC.,  
AND IS NOT FOR GENERAL DISTRIBUTION

All Dimensions in Inches  
mm in Parenthesis

REACTOR

**hammond**   
POWER SOLUTIONS

HPS CENTURION R  
3PH DRY TYPE  
REACTOR

P/N CRX0600CC

INDUCT. .046 MH 50/60 HZ 600 AMPS

0.6 KV CLASS WT: 210/96 lbs/kg IP00

AMBIENT: 50° TEMP CLASS: 220 TYPE JR

USE WITH SUITABLY RATED LISTED (ZMVV) LUGS

WINDING TERMINAL TEMPERATURE: 75° C

f003782e



MADE IN CANADA  
IND. CONT. EQ. E61431

NOTES:

**hammond**   
POWER SOLUTIONS

TITLE: LINE REACTOR

1	21/08/12	PB	HCN: 75267	DES: AYU
NO.	DATE	BY	REVISION	SCALE: NTS

SHEET 1 OF 1

EDBCRX0600CC

1.0 jwen 2023/08/17 19:40