



TITLE: IRON CORE LINE REACTOR
NAMEPLATE INFORMATION

| NO. | DATE | BY | REVISION |
|-----|------|----|----------|
| | | | |

| | |
|--------|----------|
| DES: | PBAKER |
| DATE: | 14/08/01 |
| SCALE: | NTS |

SHEET 1 OF 2

EDBCRX0590BE

0.1 httpd 2026/04/03 19:19



HPS CENTURION R
3PH DRY TYPE
REACTOR

P/N CRX0590BE

INDUCT. 0.064 MH 50/60 HZ 590 AMPS

0.6 KV CLASS WT: 306 lbs ENCL. TYPE 1/IP00

AMBIENT: 50° TEMP CLASS: 220 TYPE JR-2A

USE WITH SUITABLY RATED LISTED (ZMWV) LUGS
WINDING TERMINAL TEMPERATURE: 75° C



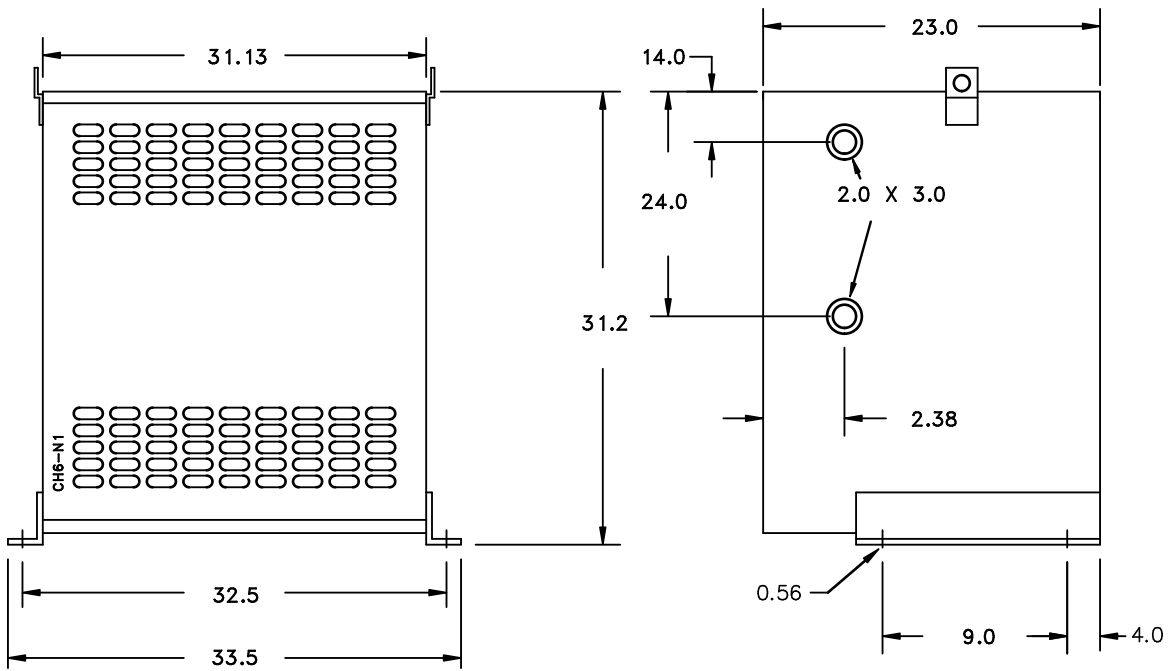
LR3902



LISTED

MADE IN CANADA
f003783e

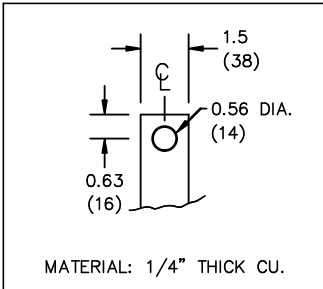
IND. CONT. EQ. E61431



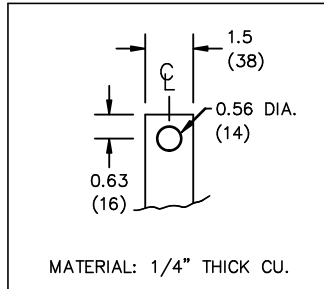
All Dimensions in inches

ENCLOSURE COLOR :ANSI 61 GREY – INDOOR

IN TERMINAL DETAIL



OUT TERMINAL DETAIL



CUSTOMER NOTES:

- IN TERMINATED AT BOTTOM FRONT
- OUT TERMINATED AT TOP FRONT



TITLE: IRON CORE LINE REACTOR

| | |
|--------|----------|
| DES: | PBAKER |
| DATE: | 14/08/01 |
| SCALE: | NTS |

| NO. | DATE | BY | REVISION |
|-----|------|----|----------|
| | | | |

SHEET 2 OF 2

EDBCRX0590BE