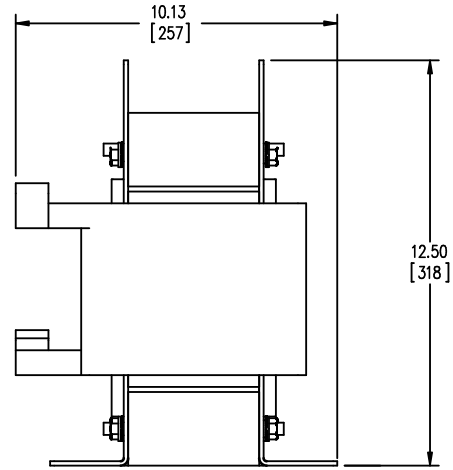
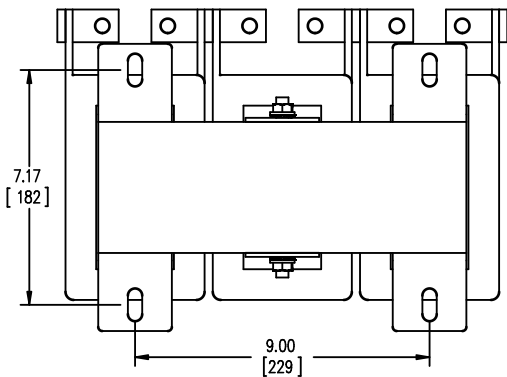


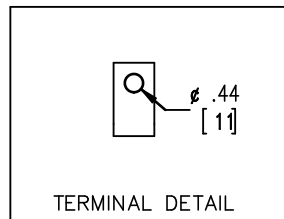
FRONT VIEW



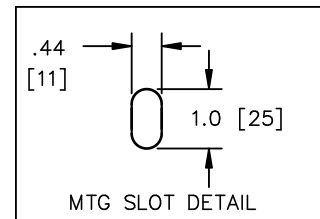
SIDE VIEW



BOTTOM VIEW



TERMINAL DETAIL



MTG SLOT DETAIL



TOLERANCES  
MOUNTING CENTERS = +/- .06"  
MOUNTING HOLE SIZE = +/- .005"

THIS DRAWING CONTAINS PROPRIETARY INFORMATION  
BELONGING TO HAMMOND POWER SOLUTIONS INC.,  
AND IS NOT FOR GENERAL DISTRIBUTION

All Dimensions in Inches  
mm in Parenthesis

REACTOR

**hammond**   
POWER SOLUTIONS

HPS CENTURION R  
3PH DRY TYPE  
REACTOR

P/N CRX0412AC

INDUCT. 0.067MH 50/60 HZ 412 AMPS

0.6 KV CLASS WT: 116/53 lbs/kg IP00

AMBIENT: 50° TEMP CLASS: 220 TYPE JR-2

USE WITH SUITABLY RATED LISTED (ZMVV) LUGS

WINDING TERMINAL TEMPERATURE: 75° C



MADE IN CANADA  
IND. CONT. EQ. E61431

f003782e

NOTES:

**hammond**   
POWER SOLUTIONS

TITLE: PROTOTYPE REACTOR

DES: PBAKER
DATE: 14/07/04
SCALE: NTS

SHEET 1 OF 1

EDBCRX0412AC

16: 17/08/2023/08:19:36