



TITLE: IRON CORE LINE REACTOR
NAMEPLATE INFORMATION

NO.	DATE	BY	REVISION	DES: PBAKER
				DATE: 14/07/31
				SCALE: NTS

SHEET 1 OF 2

EDBCRX0396CE

hammond
POWER SOLUTIONS

HPS CENTURION R
3PH DRY TYPE
REACTOR

P/N CRX0396CE

INDUCT. 0.04 MH 50/60 HZ 396 AMPS

0.6 KV CLASS WT: 132 lbs ENCL. TYPE 1/IP20

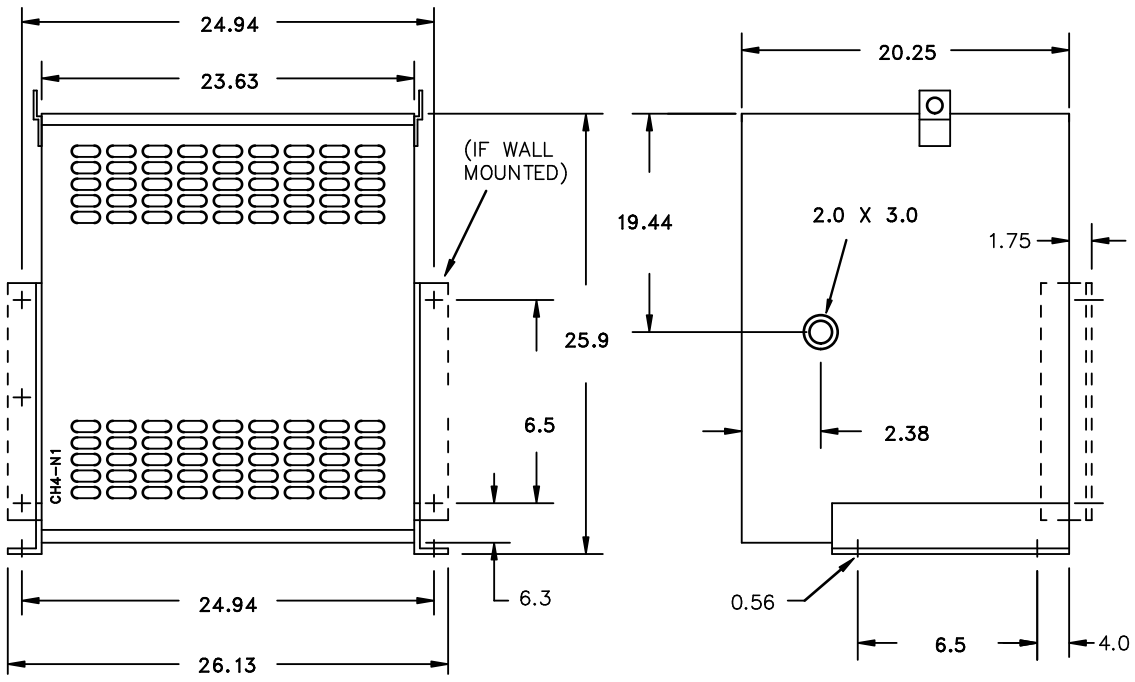
AMBIENT: 50° TEMP CLASS: 220 TYPE JR-2A

USE WITH SUITABLY RATED LISTED (ZMWV) LUGS
WINDING TERMINAL TEMPERATURE: 75° C

MADE IN CANADA
f003783e

LR3902

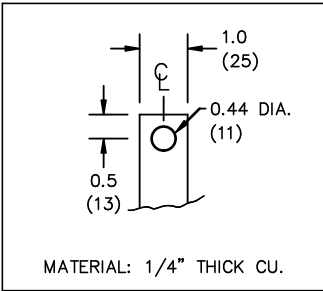
IND. CONT. EQ. E61431
LISTED



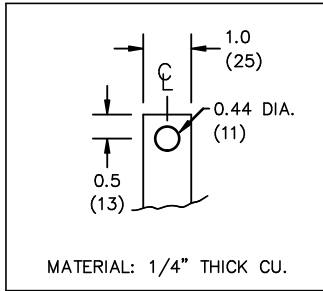
All Dimensions in inches

ENCLOSURE COLOR : ANSI 61 GREY – INDOOR

IN TERMINAL DETAIL



OUT TERMINAL DETAIL



CUSTOMER NOTES:

- IN TERMINATED AT BOTTOM FRONT
- OUT TERMINATED AT TOP FRONT



TITLE: IRON CORE LINE REACTOR				DES: PBAKER
				DATE: 14/07/31
NO.	DATE	BY	REVISION	SCALE: NTS

SHEET 2 OF 2

EDBCRX0396CE