



TITLE: IRON CORE LINE REACTOR  
NAMEPLATE INFORMATION

NO.	DATE	BY	REVISION

DES:	PBAKER
DATE:	14/08/01
SCALE:	NTS

SHEET 1 OF 2

EDBCRX0382AE




**INDUCT.** 0.07 MH 50/60 HZ  
**0.6 KV CLASS WT:** 172 lbs  
**AMBIENT:** 50°  
**USE WITH SUITABLY RATED LISTED (ZMWV) LUGS**  
**WINDING TERMINAL TEMPERATURE:** 75° C

HPS CENTURION R  
3PH DRY TYPE  
REACTOR

P/N CRX0382AE  
382 AMPS  
ENCL. TYPE 1/IP20  
TYPE JR-2A



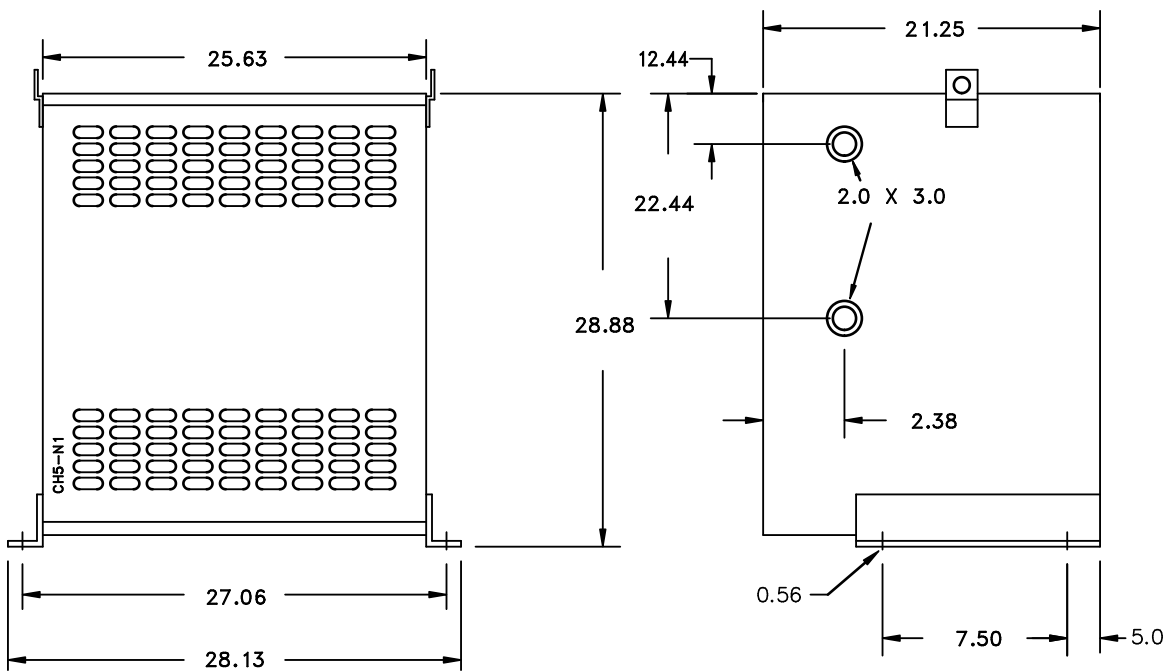
MADE IN CANADA  
f003783e



LR3902



IND. CONT. EQ. E61431  
LISTED

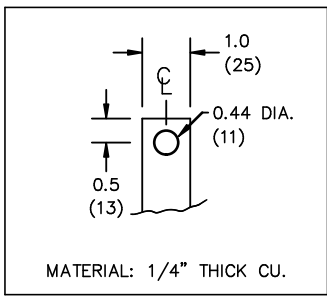
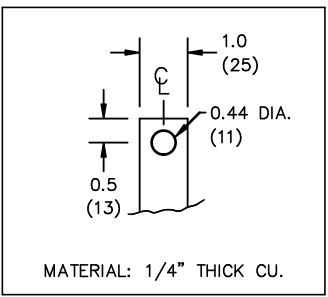


All Dimensions in inches

ENCLOSURE COLOR :ANSI 61 GREY – INDOOR

IN TERMINAL DETAIL

OUT TERMINAL DETAIL



CUSTOMER NOTES:

- IN TERMINATED AT BOTTOM FRONT
- OUT TERMINATED AT TOP FRONT



TITLE: IRON CORE LINE REACTOR				DES: PBAKER
				DATE: 14/08/01
NO.	DATE	BY	REVISION	SCALE: NTS

SHEET 2 OF 2

EDBCRX0382AE