



TITLE: IRON CORE LINE REACTOR
NAMEPLATE INFORMATION

NO.	DATE	BY	REVISION	DES: PBAKER
				DATE: 14/07/31
				SCALE: NTS

SHEET 1 OF 2

EDBCRX0336AE

0.1 htpd 2026/06/20 21:20



hammond
POWER SOLUTIONS

INDUCT. 0.08 MH 50/60 HZ
0.6 KV CLASS WT: 150 lbs
AMBIENT: 50° TEMP CLASS: 220 TYPE JR-2A

USE WITH SUITABLY RATED LISTED (ZMWV) LUGS
WINDING TERMINAL TEMPERATURE: 75° C

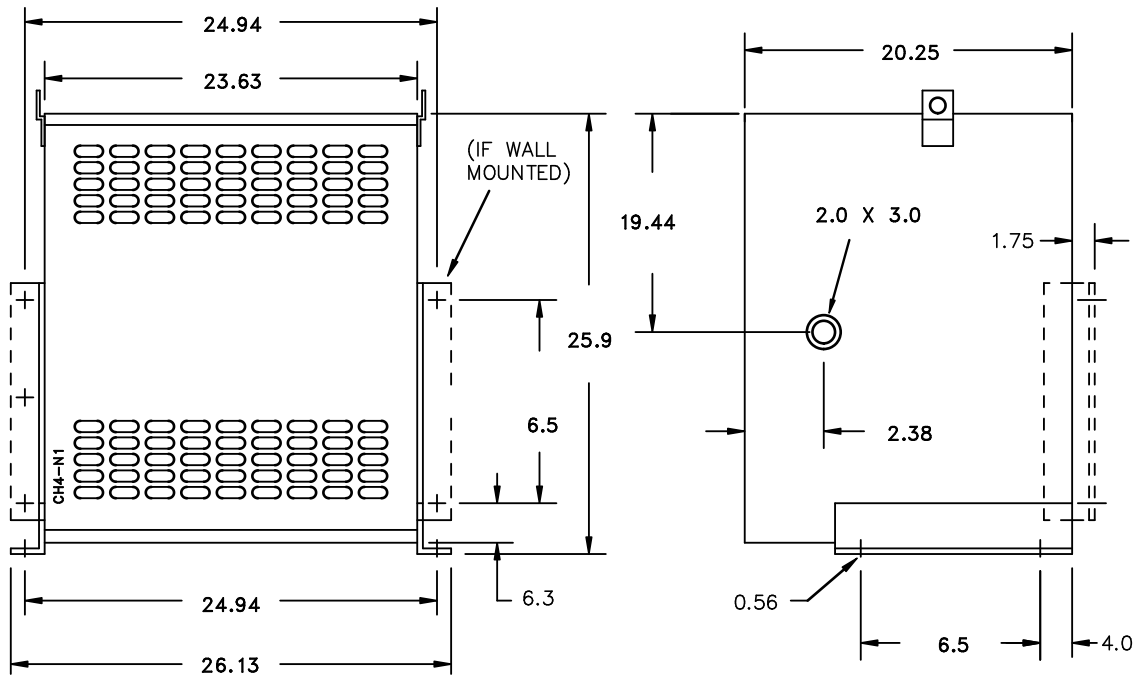
HPS CENTURION R
3PH DRY TYPE
REACTOR

P/N CRX0336AE
336 AMPS
ENCL. TYPE 1/IP20

MADE IN CANADA
f003783e

CE

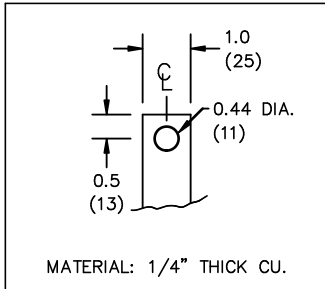
UL LISTED
IND. CONT. EQ. E61431



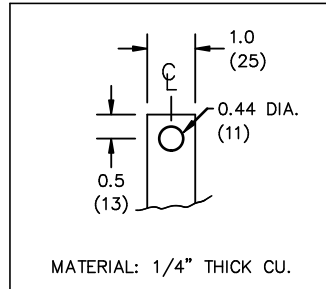
All Dimensions in inches

ENCLOSURE COLOR : ANSI 61 GREY – INDOOR

IN TERMINAL DETAIL



OUT TERMINAL DETAIL



CUSTOMER NOTES:

- IN TERMINATED AT BOTTOM FRONT
- OUT TERMINATED AT TOP FRONT



TITLE: IRON CORE LINE REACTOR

DES:	PBAKER
DATE:	14/07/31
SCALE:	NTS

NO.	DATE	BY	REVISION

SHEET 2 OF 2

EDBCRX0336AE

0.1 httpd 2026/06/20 21:20

THIS DRAWING CONTAINS STRICTLY CONFIDENTIAL INFORMATION BELONGING TO HAMMOND POWER SOLUTIONS AND MUST NOT BE DISTRIBUTED OUTSIDE AUTHORIZED PARTIES.