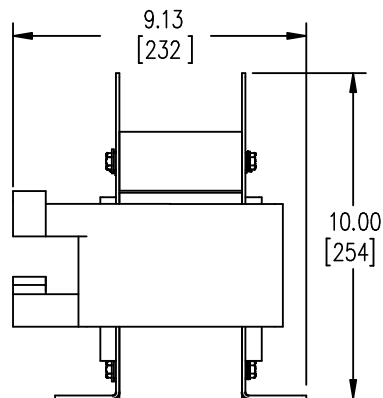
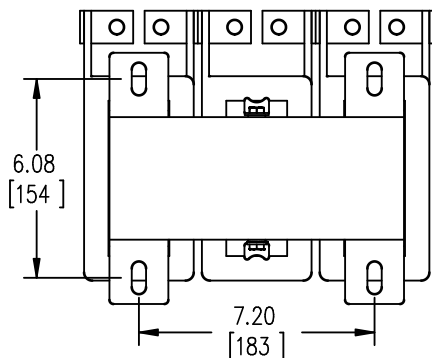


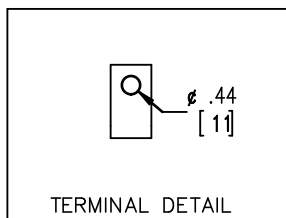
FRONT VIEW



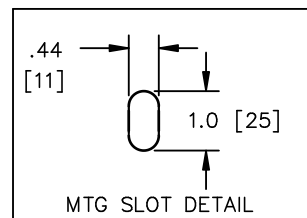
SIDE VIEW



BOTTOM VIEW



TERMINAL DETAIL



MTG SLOT DETAIL



TOLERANCES
MOUNTING CENTERS = $\pm .06"$
MOUNTING HOLE SIZE = $\pm .005"$

THIS DRAWING CONTAINS PROPRIETARY INFORMATION
BELONGING TO HAMMOND POWER SOLUTIONS INC.,
AND IS NOT FOR GENERAL DISTRIBUTION

All Dimensions in Inches
mm in Parenthesis

REACTOR

hammond 
POWER SOLUTIONS

HPS CENTURION R
3PH DRY TYPE
REACTOR

P/N CRX0273CC

INDUCT. 0.06 MH 50/60 HZ 273 AMPS

0.6 KV CLASS WT: 67/31 lbs/kg IP00

AMBIENT: 50° TEMP CLASS: 220 TYPE JR-2

USE WITH SUITABLY RATED LISTED (ZMVV) LUGS

WINDING TERMINAL TEMPERATURE: 75° C

f003782e



MADE IN CANADA
IND. CONT. EQ. E61431

NOTES:

hammond 
POWER SOLUTIONS

TITLE: PROTOTYPE REACTOR

DES: PBAKER
DATE: 14/07/04
SCALE: NTS

SHEET 1 OF 1

EDBCRX0273CC

0.1 jwen 2023/08/17 19:28