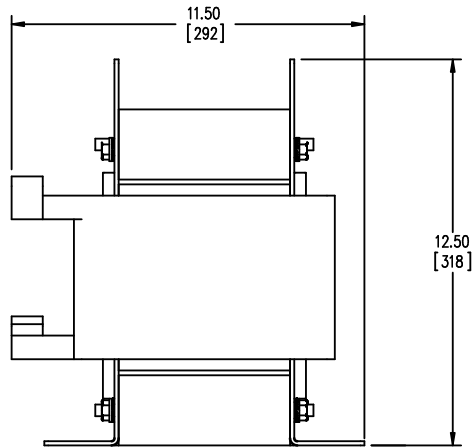
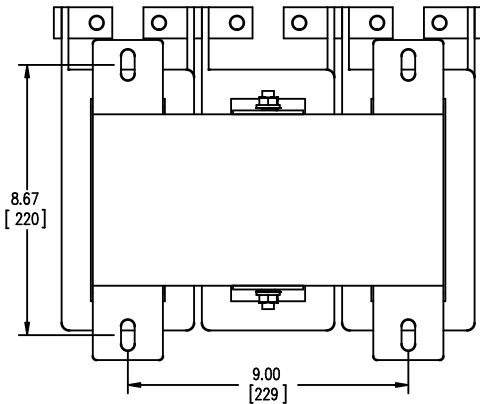


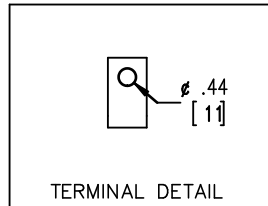
FRONT VIEW



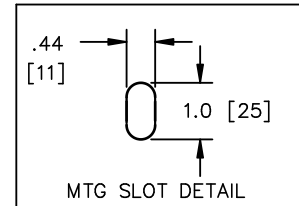
SIDE VIEW



BOTTOM VIEW



TERMINAL DETAIL



MTG SLOT DETAIL



TOLERANCES  
MOUNTING CENTERS =  $\pm .06"$   
MOUNTING HOLE SIZE =  $\pm .005"$

THIS DRAWING CONTAINS PROPRIETARY INFORMATION  
BELONGING TO HAMMOND POWER SOLUTIONS INC.,  
AND IS NOT FOR GENERAL DISTRIBUTION

All Dimensions in Inches  
mm in Parenthesis

REACTOR

**hammond**   
POWER SOLUTIONS

HPS CENTURION R  
3PH DRY TYPE  
REACTOR

P/N CRX0240BC

INDUCT. .160 MH 50/60 HZ 240 AMPS

0.6 KV CLASS WT: 154/70 lbs/kg IP00

AMBIENT: 50° TEMP CLASS: 220 TYPE JR-3

USE WITH SUITABLY RATED LISTED (ZMVV) LUGS

WINDING TERMINAL TEMPERATURE: 75° C

f003782e



MADE IN CANADA  
IND. CONT. EQ. E61431

NOTES:

**hammond**   
POWER SOLUTIONS

TITLE: PROTOTYPE REACTOR

				DES: PBAKER
				DATE: 14/07/04
NO.	DATE	BY	REVISION	SCALE: NTS

SHEET 1 OF 1

EDBCRX0240BC

17:19:27 2023/08/17