



TITLE: IRON CORE LINE REACTOR  
NAMEPLATE INFORMATION

NO.	DATE	BY	REVISION	DES: PBAKER
				DATE: 14/07/31
				SCALE: NTS

SHEET 1 OF 2

EDBCRX0211AE



HPS CENTURION R  
3PH DRY TYPE  
REACTOR

P/N CRX0211AE

INDUCT. 0.046 MH 50/60 HZ 211AMPS

0.6 KV CLASS WT: 34 lbs ENCL. TYPE 1/IP20

AMBIENT: 50° TEMP CLASS: 180 TYPE JR-3A

USE WITH SUITABLY RATED LISTED (ZMWV) LUGS  
WINDING TERMINAL TEMPERATURE: 75° C



LR3902



LISTED

MADE IN CANADA  
f003783e

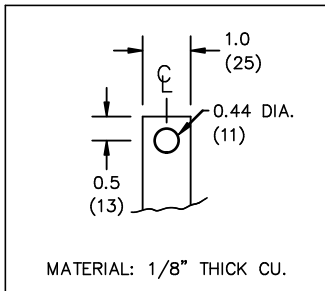
IND. CONT. EQ. E61431



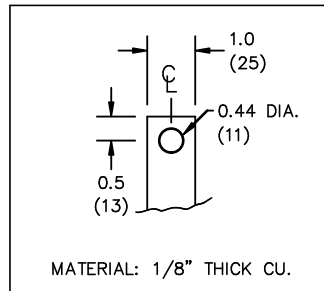
All Dimensions in inches

ENCLOSURE COLOR :ASA 61 GREY

IN TERMINAL DETAIL



OUT TERMINAL DETAIL



CUSTOMER NOTES:

- IN TERMINATED AT BOTTOM FRONT
- OUT TERMINATED AT TOP FRONT



TITLE: IRON CORE LINE REACTOR

DES:	PBAKER
DATE:	14/07/31
SCALE:	NTS

NO.	DATE	BY	REVISION

SHEET 2 OF 2

EDBCRX0211AE

0.0 httpd 2026/04/20 08:42

THIS DRAWING CONTAINS STRICTLY CONFIDENTIAL INFORMATION BELONGING TO HAMMOND POWER SOLUTIONS AND MUST NOT BE DISTRIBUTED OUTSIDE AUTHORIZED PARTIES.