



TITLE: IRON CORE LINE REACTOR  
NAMEPLATE INFORMATION

NO.	DATE	BY	REVISION	DES: PBAKER
				DATE: 14/07/31
				SCALE: NTS

SHEET 1 OF 2

EDBCRX0170BE

**hammond**  
POWER SOLUTIONS

HPS CENTURION R  
3PH DRY TYPE  
REACTOR

P/N CRX0170BE

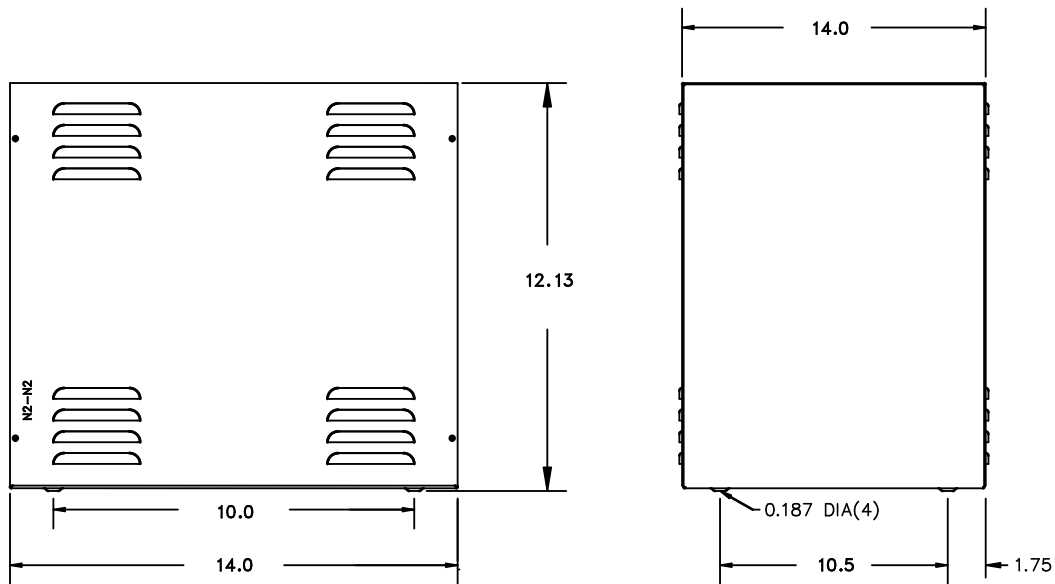
INDUCT. 0.058 MH 50/60 HZ 170 AMPS

0.6 KV CLASS WT: 33 lbs ENCL. TYPE 1/IP20

AMBIENT: 50° TEMP CLASS: 180 TYPE JR-3E

USE WITH SUITABLY RATED LISTED (ZMWV) LUGS  
WINDING TERMINAL TEMPERATURE: 75° C

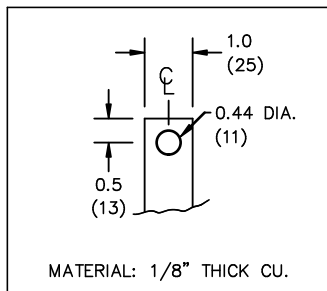
MADE IN CANADA  
f003783e



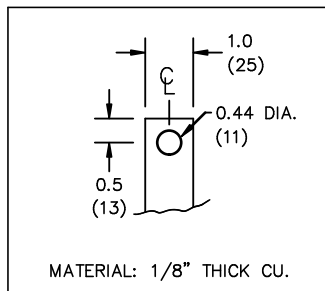
All Dimensions in inches

ENCLOSURE COLOR :ASA 61 GREY

IN TERMINAL DETAIL



OUT TERMINAL DETAIL



CUSTOMER NOTES:

- IN TERMINATED AT BOTTOM FRONT
- OUT TERMINATED AT TOP FRONT



TITLE: IRON CORE LINE REACTOR

DES:	PBAKER		
DATE:	14/07/31		
SCALE:	NTS		
NO.	DATE	BY	REVISION

SHEET 2 OF 2

EDBCRX0170BE