



TITLE: IRON CORE LINE REACTOR
NAMEPLATE INFORMATION

NO.	DATE	BY	REVISION	DES: PBAKER
				DATE: 14/07/31
				SCALE: NTS

SHEET 1 OF 2

EDBCRX0144BE

INDUCT. 0.348 MH 50/60 HZ
0.6 KV CLASS WT: 114 lbs
AMBIENT: 50° TEMP CLASS: 220 TYPE JR-2A
USE WITH SUITABLY RATED LISTED (ZMWV) LUGS
WINDING TERMINAL TEMPERATURE: 75° C

HPS CENTURION R
3PH DRY TYPE
REACTOR

P/N CRX0144BE
144 AMPS
ENCL. TYPE 1/IP20

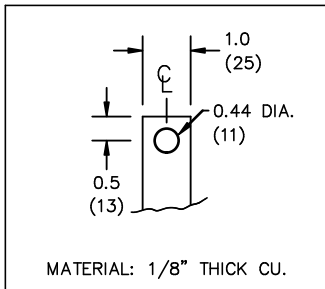
MADE IN CANADA
f003783e



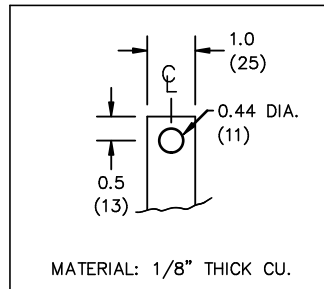
All Dimensions in inches

ENCLOSURE COLOR : ANSI 61 GREY – INDOOR

IN TERMINAL DETAIL



OUT TERMINAL DETAIL



CUSTOMER NOTES:

- IN TERMINATED AT BOTTOM FRONT
- OUT TERMINATED AT TOP FRONT



TITLE: IRON CORE LINE REACTOR

				DES: PBAKER
				DATE: 14/07/31
NO.	DATE	BY	REVISION	SCALE: NTS

SHEET 2 OF 2

EDBCRX0144BE