



TITLE: IRON CORE LINE REACTOR  
NAMEPLATE INFORMATION

NO.	DATE	BY	REVISION	DES: PBAKER
				DATE: 14/07/31
				SCALE: NTS

SHEET 1 OF 2

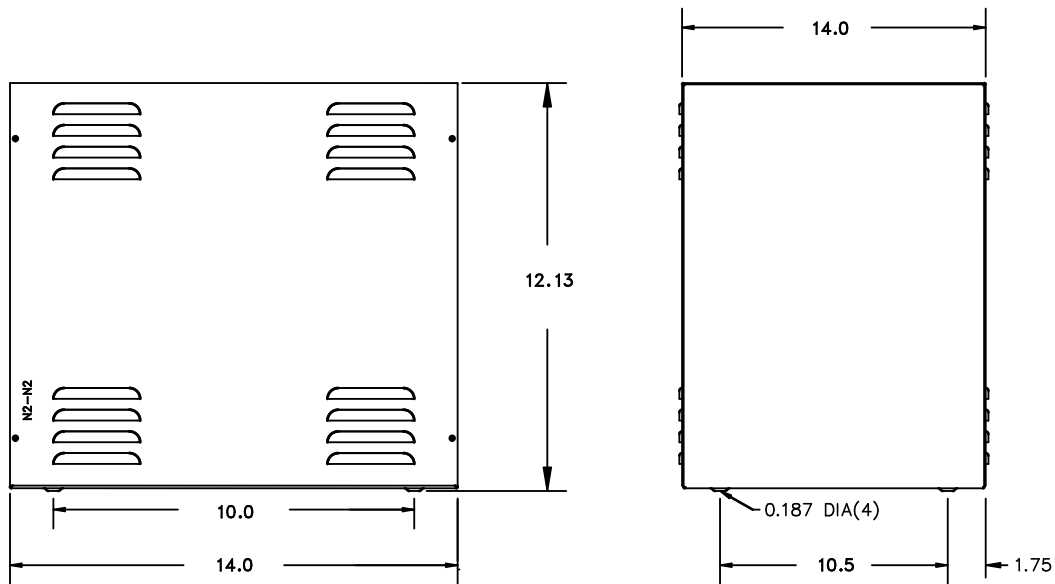
EDBCRX0143BE

INDUCT. 0.096 MH 50/60 HZ  
0.6 KV CLASS WT: 44 lbs  
AMBIENT: 50° TEMP CLASS: 220 TYPE JR-2A  
USE WITH SUITABLY RATED LISTED (ZMWV) LUGS  
WINDING TERMINAL TEMPERATURE: 75° C

HPS CENTURION R  
3PH DRY TYPE  
REACTOR

P/N CRX0143BE  
143 AMPS  
ENCL. TYPE 1/IP20

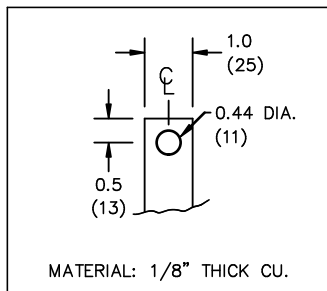
MADE IN CANADA  
f003783e



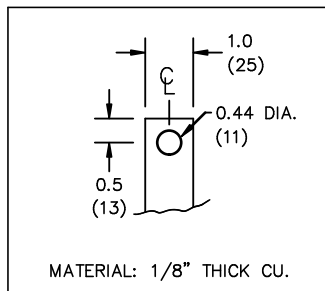
All Dimensions in inches

ENCLOSURE COLOR :ASA 61 GREY

IN TERMINAL DETAIL



OUT TERMINAL DETAIL



CUSTOMER NOTES:

- IN TERMINATED AT BOTTOM FRONT
- OUT TERMINATED AT TOP FRONT



TITLE: IRON CORE LINE REACTOR

				DES: PBAKER
				DATE: 14/07/31
NO.	DATE	BY	REVISION	SCALE: NTS

SHEET 2 OF 2

EDBCRX0143BE